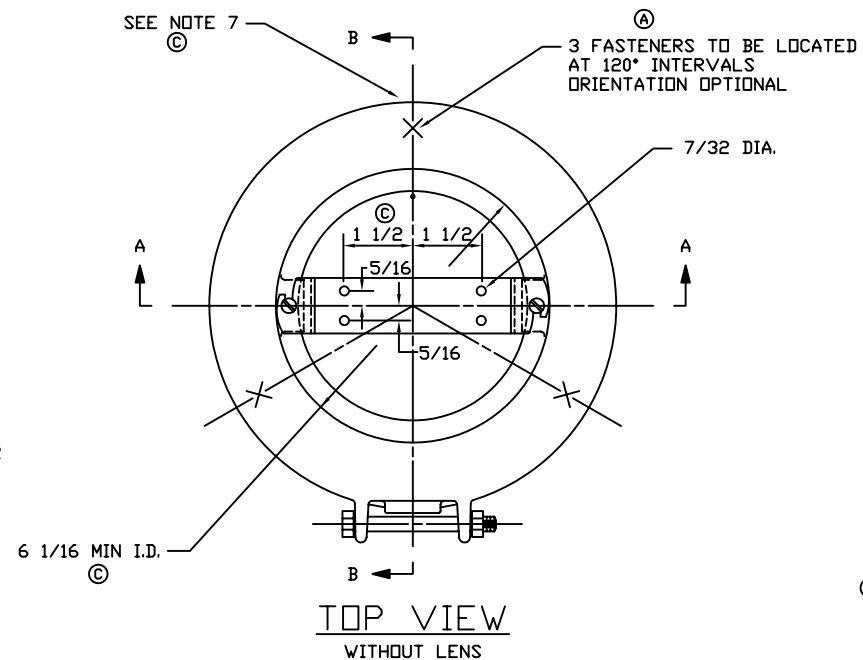
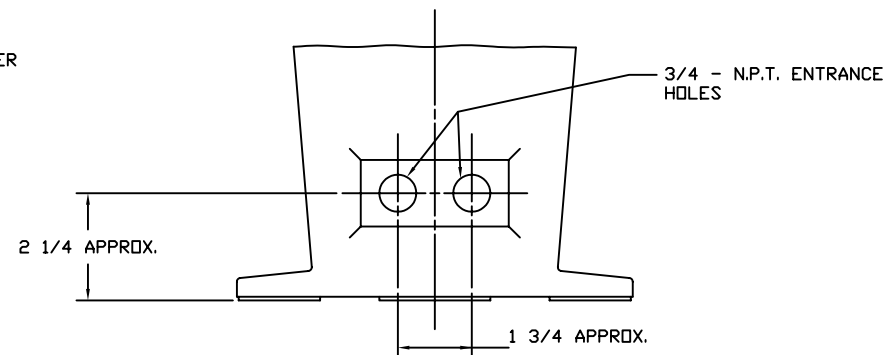


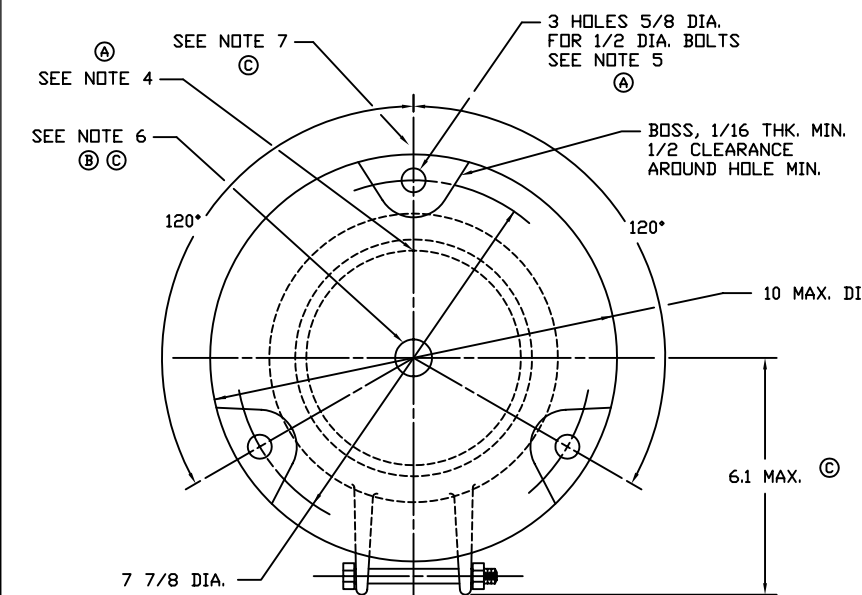
SECTION A-A



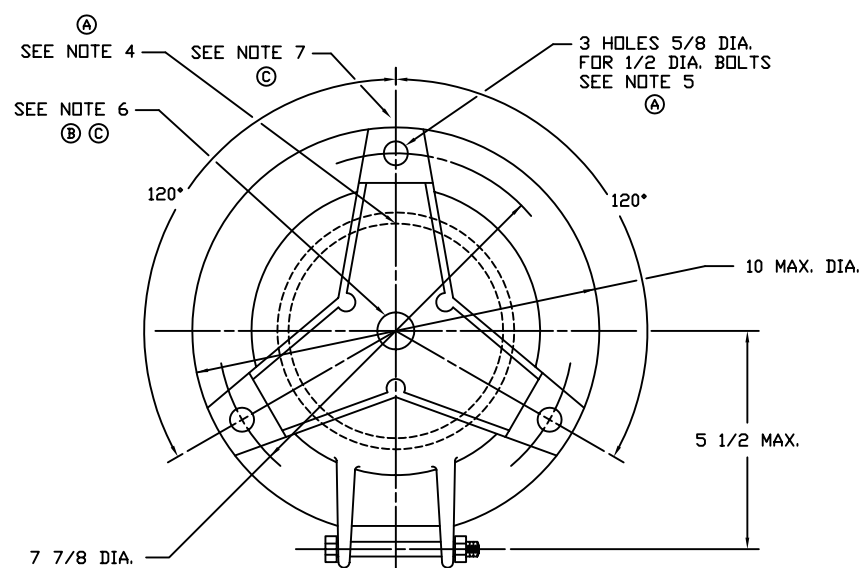
TOP VIEW  
WITHOUT LENS



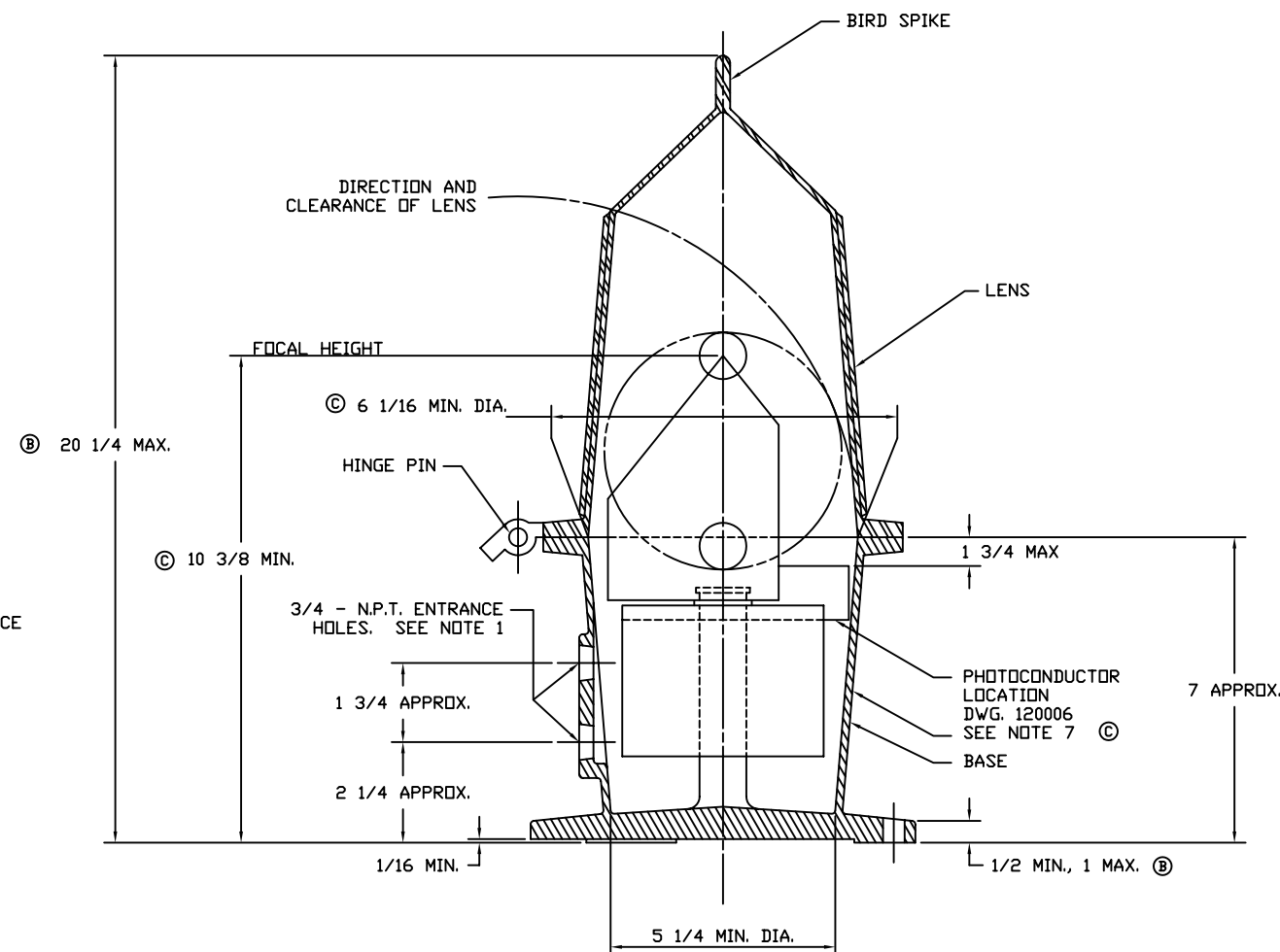
CABLE ENTRANCE  
(OPTIONAL METHOD)



BOTTOM VIEW



BOTTOM VIEW  
(OPTIONAL METHOD)



SECTION B-B

**NOTES:**

1. PIPE PLUG IN UPPER HOLE AND CABLE GRIP IN LOWER HOLE.
2. DETAIL OF DESIGN TO SUIT MANUFACTURER.
3. MATERIAL: SEE PURCHASE DESCRIPTION.
4. 3 OR 4 - 1/16" DIA. VENT HOLES EQUALLY SPACED ON A 4" MINIMUM DIA. CIRCLE.
5. 3 HOLES SPACED 120°, ORIENTATION OPTIONAL EXCEPT NONE SHALL BE CLOSER THAN 40° TO THE CENTER OF THE CABLE ENTRANCE HOLES.
6. CIRCULAR BOSS WITH DIAMETER AND THICKNESS LARGE ENOUGH TO ALLOW TAPPING OF A 3/4" N.P.T. THREADED HOLES.
7. LOCATION OF OPTIONAL CABLE ENTRANCE OR SITE PREPARED FOR TAPPING ENTRANCE.

④	4-17 -91	REDRAWN USING AUTOCAD	ANP
③	2-24 -86	DHW NOTE 7 ADDED, NOTE 6 DELETED, BRACKET HOLE DIM. MINIMUM DIMENSIONS FOR FOCAL HEIGHT AND INTERIOR OF BASE DECREASED, BASE WIDTH TO HINGE DIMENSION INCREASED.	LM
②	3-23 -72	W MAX. DIMENSION FOR LANTERN'S OVERALL HEIGHT AND BASE THICKNESS, INCREASE BY 1/4"; NOTE 6 ADDED.	WTW
①	3-30 -70	KDU FASTENER POSITION MADE OPTIONAL; NOTE 4 & 5 ADDED; TITLE BLOCK CHANGED; INTERNAL DIM. ADDED.	WTW
REV.	DATE	APPR.	DESCRIPTION
DESIGNED BY:	U.S. COAST GUARD HEADQUARTERS		
DRAWN BY:	CIVIL ENGINEERING		
TRACED BY:	BUOY LANTERN		
CHECKED BY:	TYPE CG-205		
REVIEWED BY:	E.C. BALL		
PROJECT ENGINEER	REVIEWED BY:		
G-ECV-3B	APPROVED:	DATE	
CHIEF OF OCEAN ENGINEERING BRANCH			
UNLESS OTHERWISE SPECIFIED: ALL DIMENSIONS ARE IN INCHES. TOLERANCES: DIM. ANG.		DRAWING NUMBER	REV.
		120085	D
SCALE: NONE		SHEET 1 OF 1	