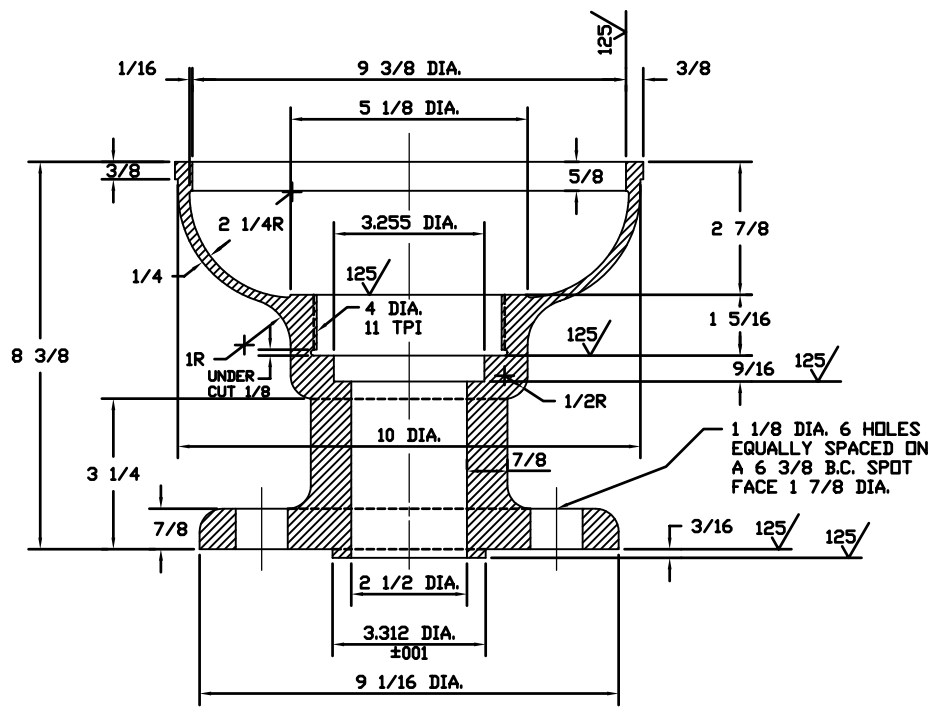
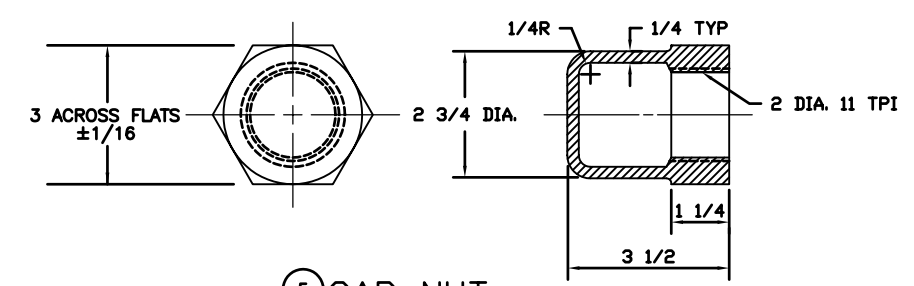


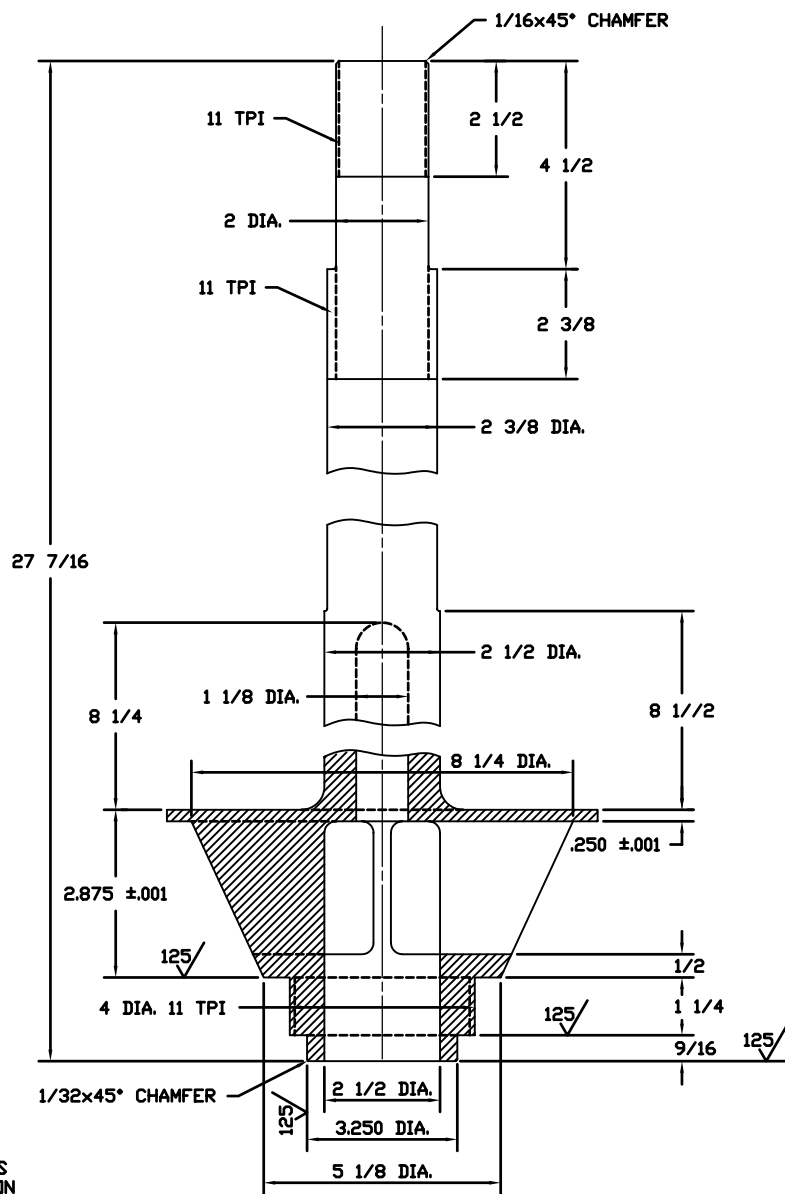
1 BELL CASTING
(CG YARD PAT. #945-5)



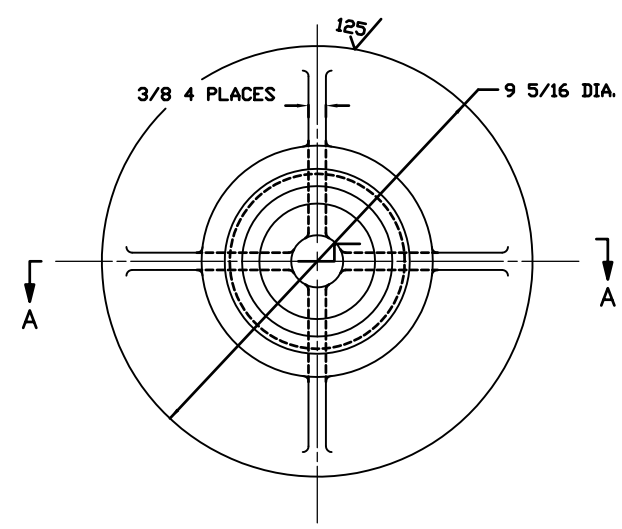
2 WHISTLE BODY
(CG YARD PAT. #945-4)



5 CAP NUT
(CG YARD PAT. #945-7)

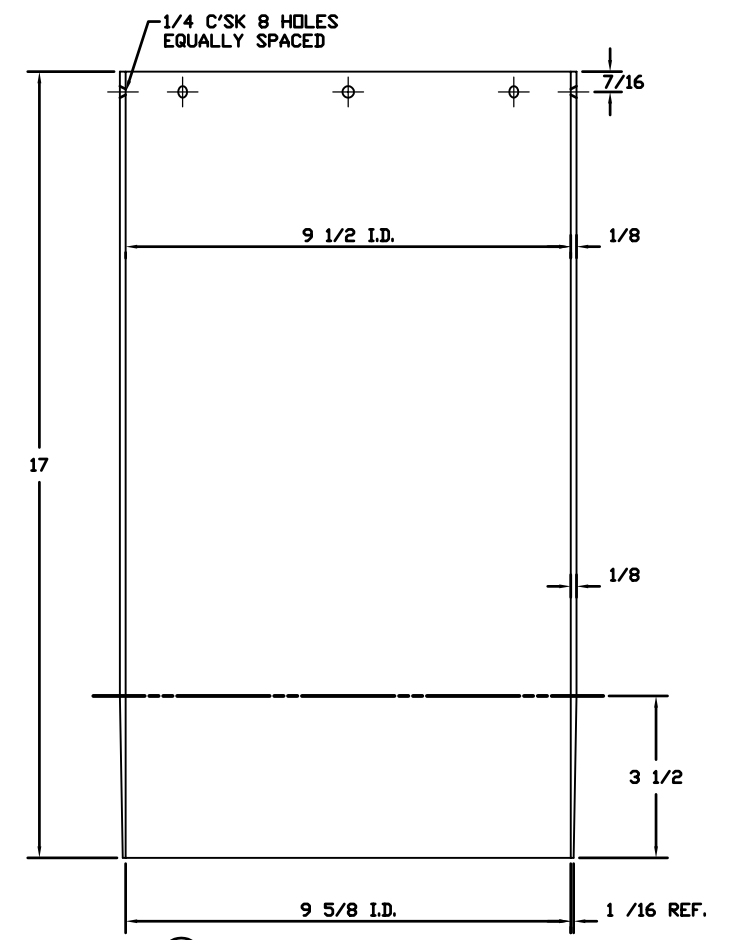


SECTION A-A



3 SPINDLE
(CG YARD PAT. #945-6)

BILL OF MATERIALS				
ITEM NO.	NO. REQ.	DESCRIPTION	MATL.	REMARKS
1	1	BELL CASTING	COPPER SILICON ALLOY	SEE DETAIL
2	1	WHISTLE BODY	COPPER SILICON ALLOY	SEE DETAIL
3	1	SPINDLE	COPPER SILICON ALLOY	SEE DETAIL
4	1	WHISTLE BELL	COPPER SILICON ALLOY	SEE DETAIL
5	1	CAP NUT	COPPER SILICON ALLOY	SEE DETAIL
6	1	SET SCREW HEX HD.	BRASS	1/2-13x5/8 LG.
7	8	CSK HD. SCREW	BRASS	1/4-20x3/8 LG.



4 WHISTLE BELL

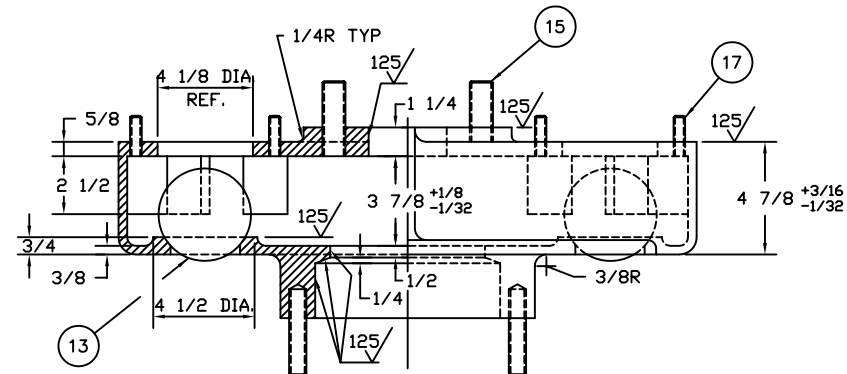
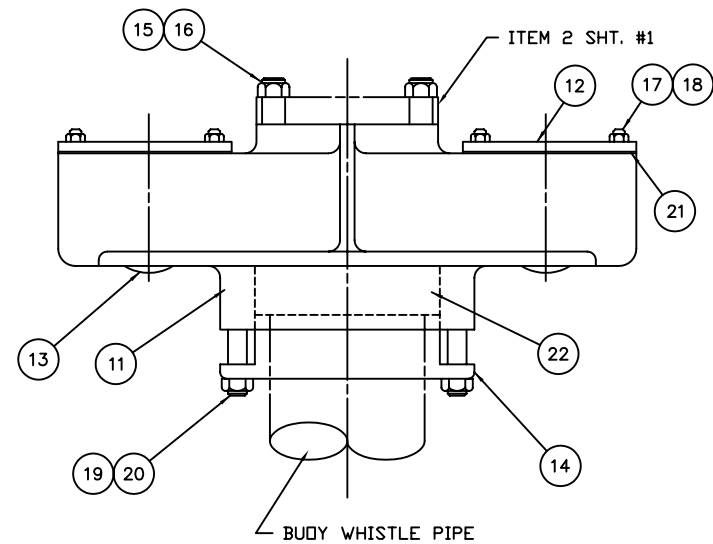
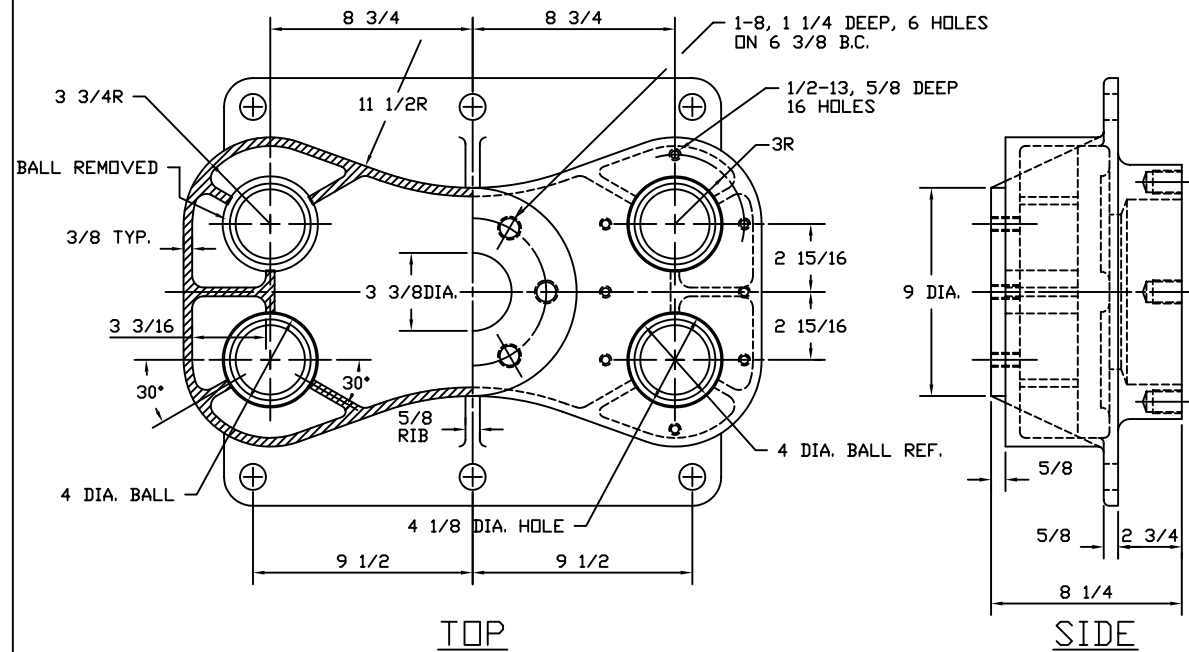
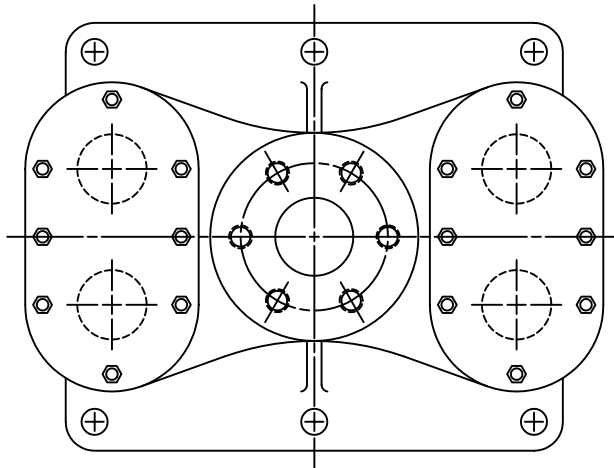
- NOTES:
- SEE LATEST REVISION OF CIVIL ENGINEERING SPECIFICATION NO. 381 FOR FABRICATION REQUIREMENTS.
 - THIS DRAWING REDRAWN FROM LIGHTHOUSE DRAWING 7397, DATED FEB. 25, 1929.

ASSEMBLY
SCALE: 3"=1'-0"

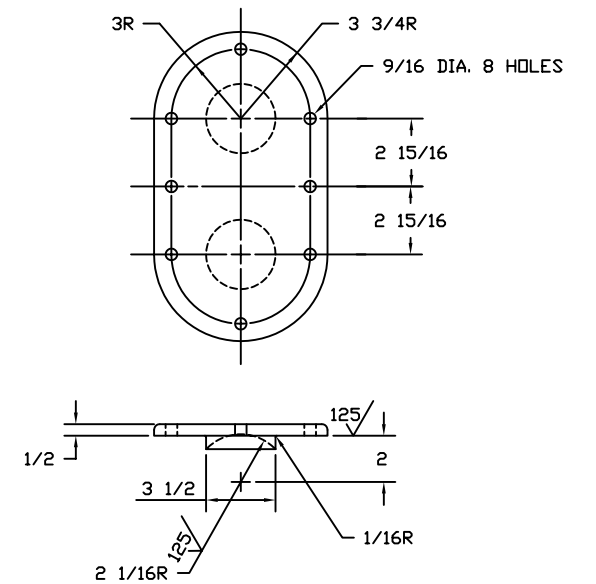
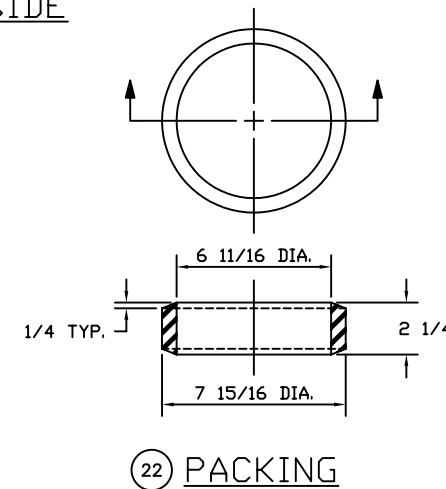
PLOTTING SCALE: 6"=1'-0"

REV.	DATE	APPR.	DESCRIPTION	BY
E	5-3-94	PJG	MODIFIED NOTES AND BILL OF MATERIAL FOR ITEM 13.	S.M.
D	3-19-92	PJG	MODIFIED TOLERANCE FOR ITEMS 1 AND 5.	S.M.
C	3-18-91	PJG	REDRAWN USING AUTOCAD	DAG
B	6-16-83	PJG	SEE SHT. #2	GWB
A	3-21-83	PJG	CHANGED MAT'L ON ITEMS 11 & 14 TO COPPER SILICON ALLOY.	GWB

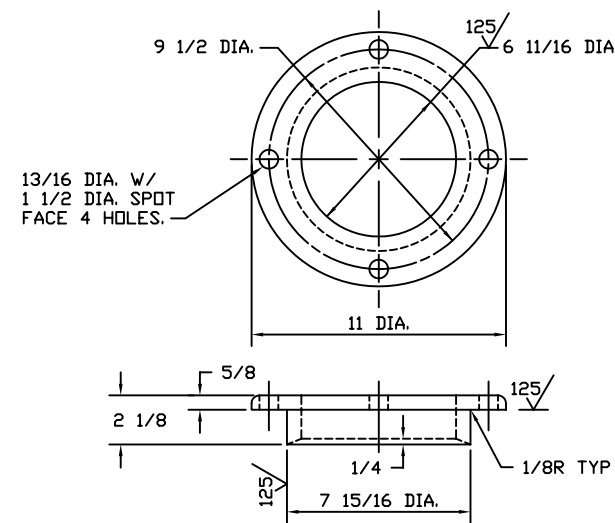
DESIGNED:	U.S. COAST GUARD		HEADQUARTERS
DRAWN:	CIVIL		ENGINEERING
TRACED:	BUOY WHISTLE & VALVE		WHISTLE
CHECKED:	ASSEMBLY & DETAILS		
REVIEWED BY:	APPROVED:		DATE
H. Dudley CH. B & S SEC.	K. D. Ufer		6-22-78
D. Nass CH. SIG. BR.	CHIEF OF DIVISION		
UNLESS OTHERWISE SPECIFIED: ALL DIMENSIONS ARE IN INCHES. TOLERANCES: DIM. DEC ±.010, FR ±1/32 ANG. 30°		DRAWING NUMBER	REV.
		120777	E
SCALE: HALF SIZE		SHEET 1 OF 2	



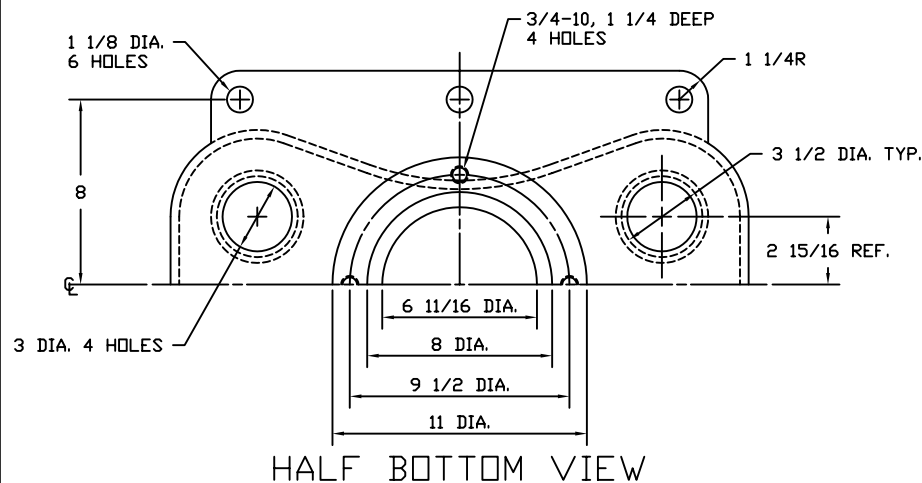
11 VALVE BODY
(CG YARD PAT. # 945-1)



12 VALVE COVER
(CG YARD PAT. # 945-2)



14 GLAND
(CG YARD PAT. # 945-3)



HALF BOTTOM VIEW

ASSEMBLY

NOTES:

- SEE LATEST REVISION OF CIVIL ENGINEERING SPECIFICATION NO. 381 FOR FABRICATION REQUIREMENTS.
- THIS DRAWING REDRAWN FROM LIGHTHOUSE DRAWING 7397, DATED FEB. 25, 1929.
- FURNISHED BY COAST GUARD UNIT AT FINAL DESTINATION.

BILL OF MATERIALS				
ITEM NO.	NO. REQ.	DESCRIPTION	MATL.	REMARKS
11	1	VALVE BODY	COPPER SILICON ALLOY	SEE DETAIL
12	2	VALVE COVER	COPPER SILICON ALLOY	SEE DETAIL
13	4	BALL (4" DIA.)	RUBBER	WEIGHT NOT TO EXCEED 7 1/2 OZ.
14	1	GLAND	COPPER SILICON ALLOY	SEE DETAIL
15	6	TOP STUD	BRASS	1-8 x 3 1/4 LG.
16	6	HEX HD NUT	BRASS	1-8 THD.
17	16	COVER STUD	BRASS	1/2-13 x 1 3/4 LG.
18	16	HEX HD NUT	BRASS	1/2-13
19	4	BOTTOM STUD	BRASS	3/4-10 x 3 3/4 LG.
20	4	HEX HD NUT	BRASS	3/4-10 THD.
21	2	GASKET (1/16 THK.)	RUBBER OR CORK	TO SUIT ITEM 12
22	1	PACKING	RUBBER OR CORK	SEE DETAIL

REV.	DATE	APPR.	DESCRIPTION	BY
E	5-3-94	BTL/SW	MODIFIED NOTES AND BILL OF MATERIAL FOR ITEM 13.	S.M.
D	3-19-92	BTL/SW	SEE PAGE 1.	S.M.
C	4-2-91	BTL/SW	REDRAWN USING AUTOCAD	DAG
B	6-16-83	PJG	ADDED TOL. ON TWO DIMENSIONS OF ITEM 11 AS SHOWN	GWB
A	3-21-83	PJG	CHANGE MAT'L ON ITEMS 1-5 TO COPPER SILICON ALLOY.	GWB

DESIGNED:	U.S. COAST GUARD		HEADQUARTERS
DRAWN:	CIVIL ENGINEERING		
TRACED:	BUOY WHISTLE & VALVE		
CHECKED:	VALVE		
REVIEWED BY:	ASSEMBLY & DETAILS		
REVIEWED BY:	APPROVED:	DATE	
H. Dudley CH. B & S SEC	K. D. Usher	6-22-78	
D. A. Flann CH. SIG. BR.	CHIEF OF DIVISION		
UNLESS OTHERWISE SPECIFIED: ALL DIMENSIONS ARE IN INCHES. TOLERANCES: DIM. DEC ±.010; FR. ±1/32 ANG. 30°		DRAWING NUMBER	REV.
		120777	E
SCALE: 3"=1'-0"		SHEET 2 OF 2	