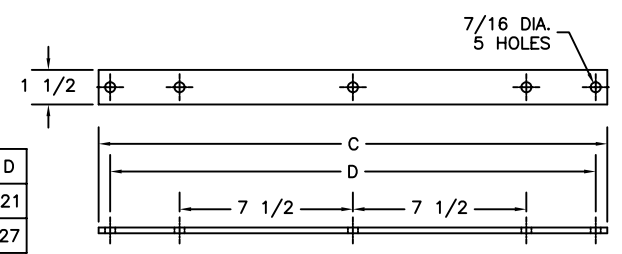
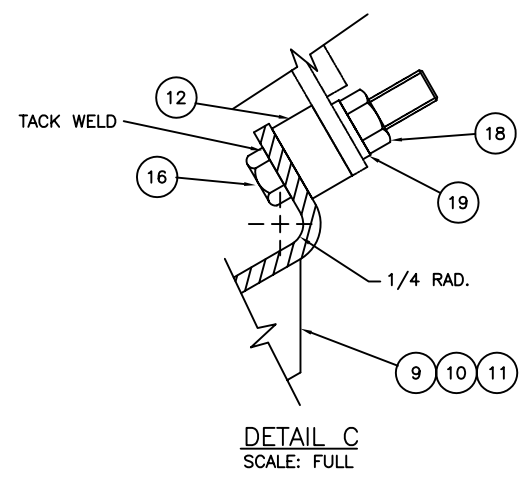
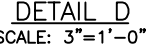
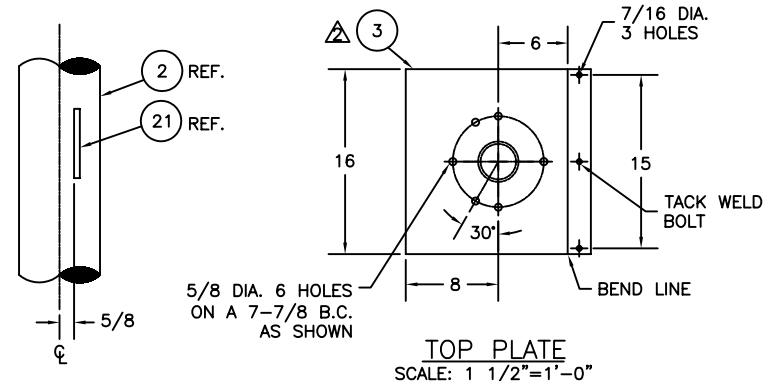
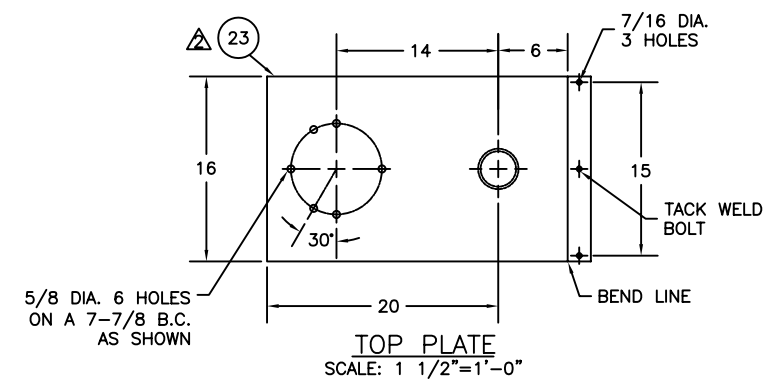
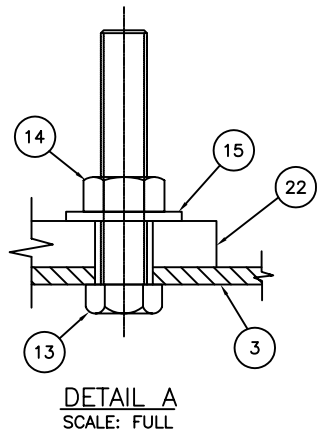
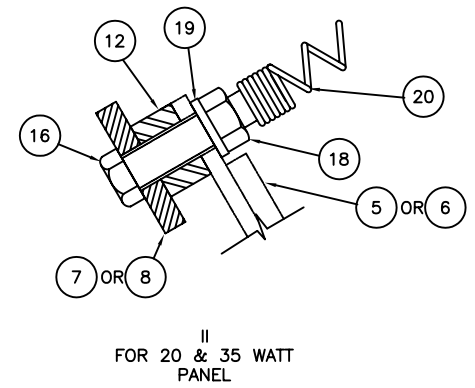
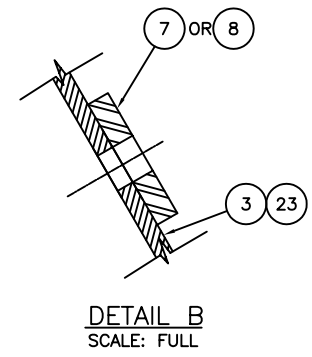
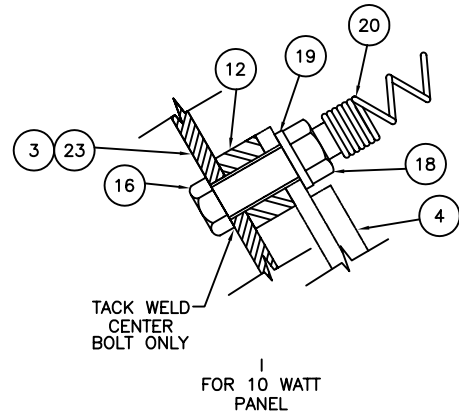


**NOTES:**

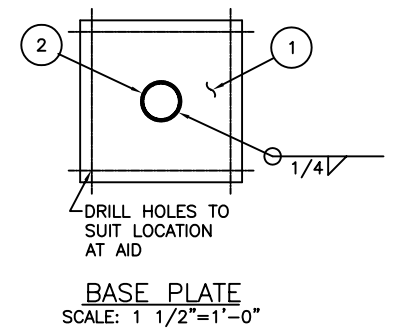
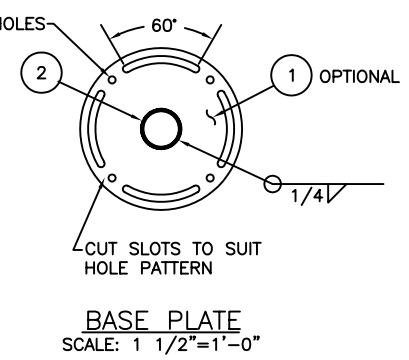
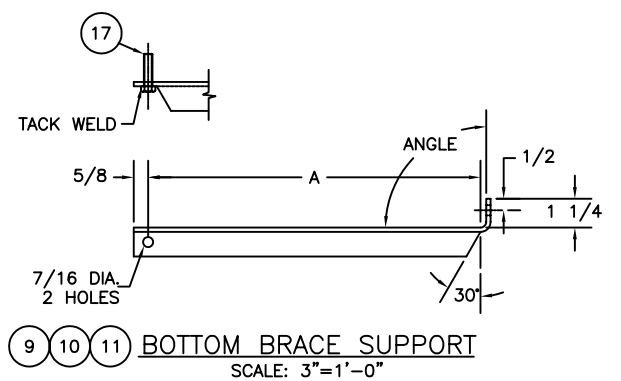
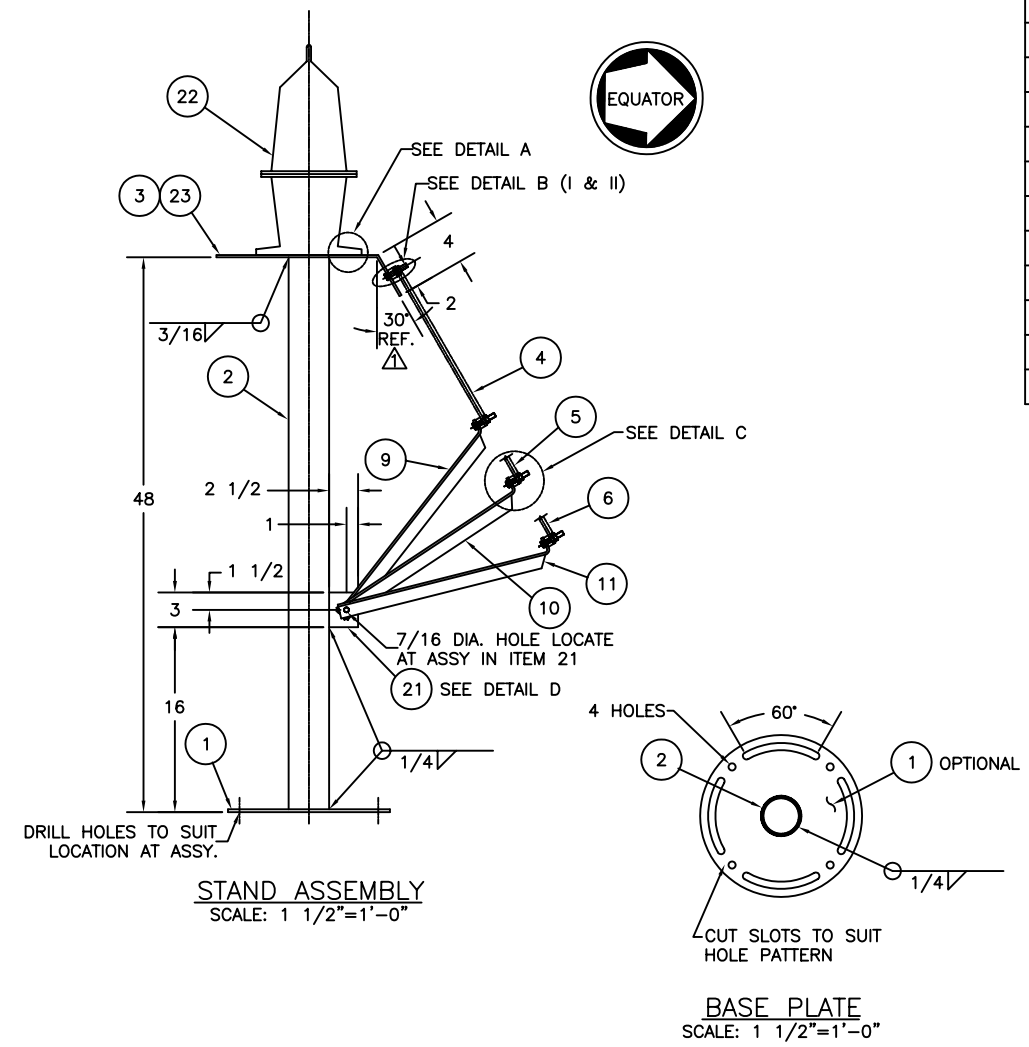
△ ANGLE ON ITEM 3 FOR MOUNTING SOLAR PANELS TO BE GOVERNED BY THE FOLLOWING LOCATIONS:  
 A. ALASKA - - - - - 15°  
 B. CONTINENTAL US - - - 30°  
 C. HAWAII & GANTSEC - - 60°

△ REPLACE ITEM 3 WITH ITEM 23 ONLY WHEN STAND ASSEMBLY IS MFG. FOR 14th DISTRICT OR GREATER ANTILLES SECTION.

| ITEM NO. | 10 WATT |        |        | 20 WATT |        |        | 35 WATT |        |     |
|----------|---------|--------|--------|---------|--------|--------|---------|--------|-----|
|          | 15'     | 30'    | 60'    | 15'     | 30'    | 60'    | 15'     | 30'    | 60' |
| A        | 9       | 9      | 9      | 10      | 10     | 10     | 11      | 11     | 11  |
|          | 15      | 18 3/4 | 27 3/4 | 11 3/8  | 17 3/8 | 29 1/4 | 10 3/8  | 17 3/4 | 32  |
| ANGLE    | 134°    | 110°   | 79°    | 112°    | 92°    | 68°    | 80°     | 73°    | 58° |



| ITEM NO. | C  | D  |
|----------|----|----|
| 7        | 22 | 21 |
| 8        | 28 | 27 |



**BILL OF MATERIALS**

| ITEM NO. | NO. REQ. | DESCRIPTION          | MATL.        | REMARKS                       |
|----------|----------|----------------------|--------------|-------------------------------|
| 1        | 1        | BASE PLATE           | STEEL        | 1/4 THK.                      |
| 2        | 1        | PIPE                 | STEEL        | 3 SCH 40 PIPE                 |
| 3        | 1        | TOP PLATE            | STEEL        | 3/16 THK.                     |
| 4        | 1        | SOLAR PANEL          | ---          | 10 WATT                       |
| 5        | 1        | SOALR PANEL          | ---          | 20 WATT                       |
| 6        | 1        | SOLAR PANEL          | ---          | 35 WATT                       |
| 7        | 1        | TOP BRACE            | STEEL        | FOR ITEM 5 1/4 THK.           |
| 8        | 1        | TOP BRACE            | STEEL        | FOR ITEM 6 1/4 THK.           |
| 9        | AR       | BOTTOM BRACE SUPPORT | STEEL        | FOR ITEM 4 1-1/4x1-1/4x3/16 L |
| 10       | AR       | BOTTOM BRACE SUPPORT | STEEL        | FOR ITEM 5 1-1/4x1-1/4x3/16 L |
| 11       | AR       | BOTTOM BRACE SUPPORT | STEEL        | FOR ITEM 6 1-1/4x1-1/4x3/16 L |
| 12       | AR       | SPACER WASHER        | NYLON        | 1/2 ID. x 7/8 OD. x 1/2 THK.  |
| 13       | 4        | HEX HEAD BOLT        | STAIN. STEEL | 1/2-13 UNC x 2-3/4 LG.        |
| 14       | 4        | HEX HEAD STOP NUT    | STAIN. STEEL | 1/2-13 UNC                    |
| 15       | 4        | FLAT WASHER          | STAIN. STEEL | 1/2 STD.                      |
| 16       | AR       | HEX HEAD BOLT        | STAIN. STEEL | 3/8-16 UNC x 2 LG.            |
| 17       | AR       | HEX HEAD BOLT        | STAIN. STEEL | 3/8-16 UNC x 1-1/2 LG.        |
| 18       | AR       | HEX HEAD STOP NUT    | STAIN. STEEL | 3/8-16 UNC                    |
| 19       | AR       | LOCK WASHER          | STAIN. STEEL | 3/8 STD.                      |
| 20       | AR       | BIRD SPRING          | STAIN. STEEL | 5360-01-100-3111              |
| 21       | 1        | SUPPORT STRIP        | STEEL        | 1/4 THK.                      |
| 22       | 1        | 155MM LANTERN        |              | COMPLETE                      |
| 23       | 1        | TOP PLATE            | STEEL        | 3/16 THK.                     |

| REV. | DATE    | APPR. | DESCRIPTION   | BY   |
|------|---------|-------|---|------|
| E    | 4-27-99 | S.W.  | REDRAWN IN AUTOCAD. REORGANIZED THE DRAWING.  | S.M. |
| D    |         |       | CHANGED ITEMS 7 & 8. ADDED OPTIONAL DETAIL FOR ITEM 1.  |      |
| C    |         |       | CHANGED ITEM 17 IN DET. C TO ITEM 16. MOD DET. D DIM. OF 23/32" TO 5/8", REVERSED ITEM 17 ON ITEM 9, 10 & 11. |      |
| B    |         |       | ADDED DETAIL D. TRACED AND RELETTERED.  |      |
| A    |         |       | ADDED ITEM 23   |      |

|   |                             |              |
|---|-----------------------------|--------------|
| DESIGNED BY:  | U.S. COAST GUARD            | HEADQUARTERS |
| DRAWN BY:   |                             |              |
| TRACED BY:  |                             |              |
| CHECKED BY:   |                             |              |
| REVIEWED BY:  |                             |              |
| REVIEWED BY:  | L. C. Brudnicki<br>G-EQE-4C |              |
| REVIEWED BY:  | C. B. Doherty<br>G-EQE-4    |              |
| APPROVED:   | L. Lomer                    | DATE: 1984   |
| UNLESS OTHERWISE SPECIFIED: ALL DIMENSIONS ARE IN INCHES. TOLERANCES: DIM. ±1/8 ANG. ±30° |                             |              |
| DRAWING NUMBER: 120978  |                             | REV. E       |
| SCALE: AS NOTED   | SHEET 1 OF 1                |              |