

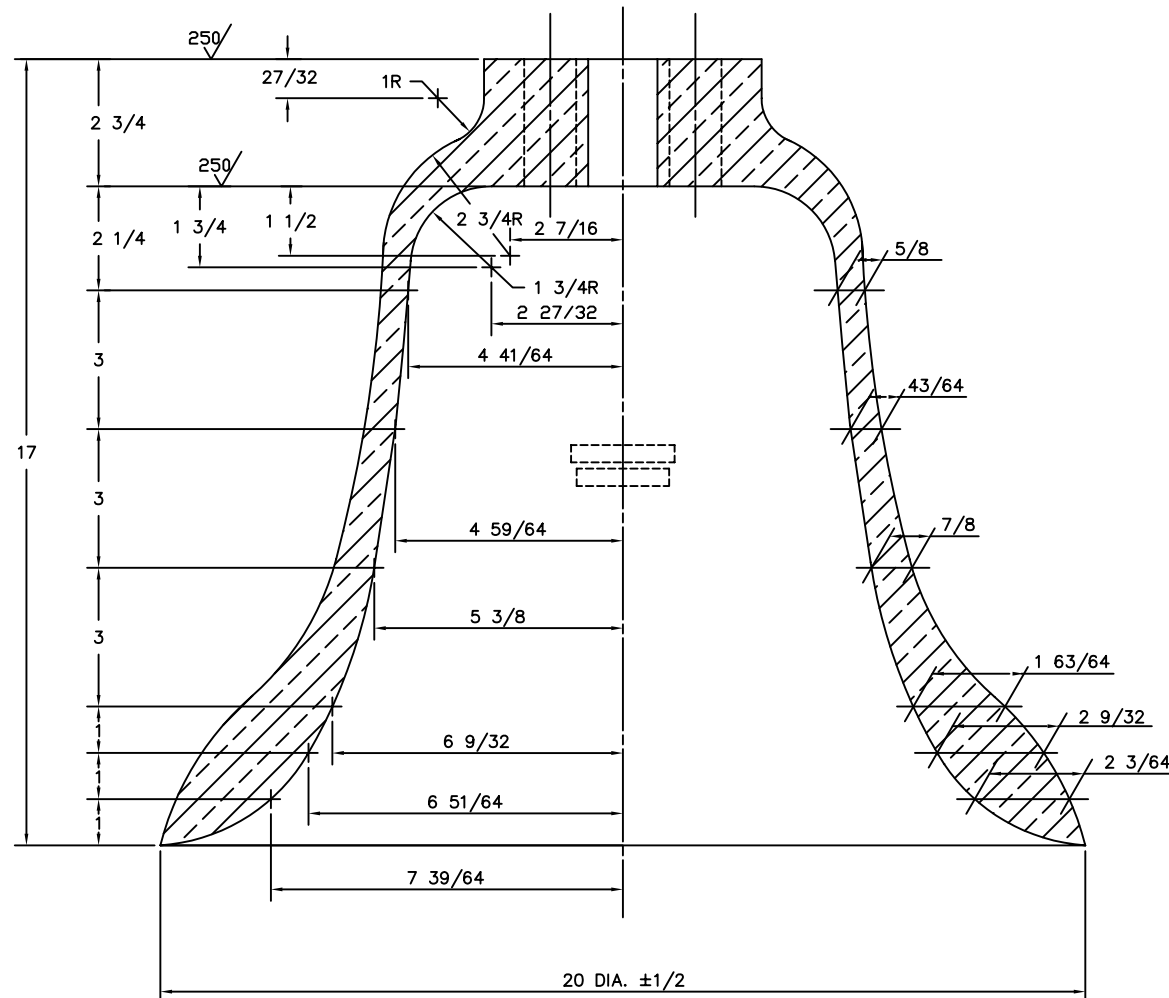
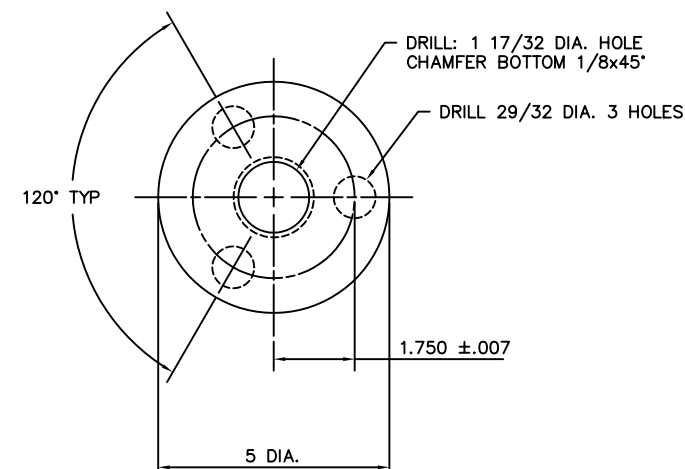
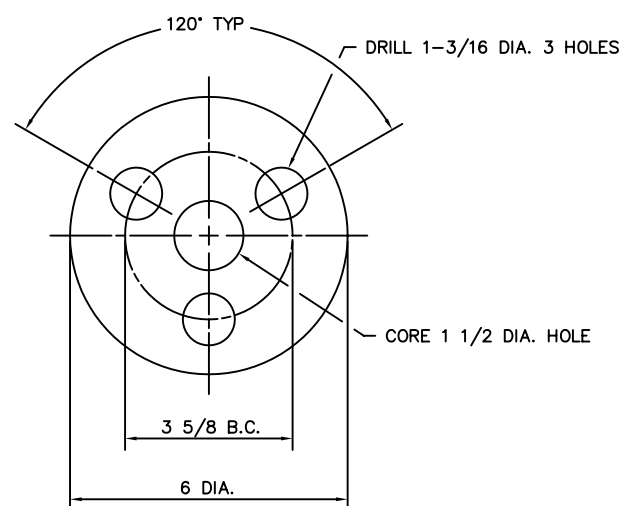
BILL OF MATERIALS

ITEM NO.	NO. REQ.	DESCRIPTION	MATL.	REMARKS
1	1	225 LB. BELL	COPPER	SEE NOTES
2	1	85 LB. BELL	COPPER	SEE NOTES

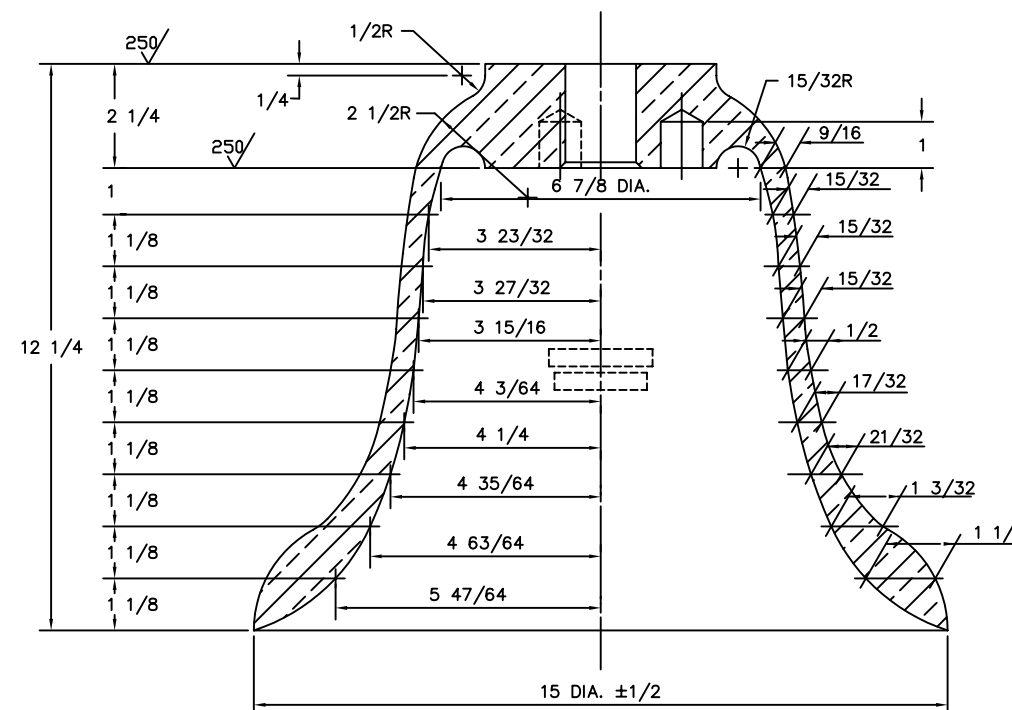
NOTE:

- SEE LATEST REVISION OF U.S.C.G CIVIL ENGINEERING SPECIFICATION No. 357 FOR FABRICATION REQUIREMENTS.
- MATERIAL-BELLS AND GONGS
CAST COPPER SILICON ALLOY MEETING ASTM B-584, COPPER ALLOY UNS No. C87600
- WEIGHT TOLERANCE
AFTER MACHINING, THE ACTUAL WEIGHT OF INDIVIDUAL BELLS SHALL NOT VARY FROM WEIGHT SPECIFIED BY MORE THAN THE FOLLOWING:
225 LB BELL: ±15 LB.
85 LB BELL: +5LB. -15 LB.

--- LOCATION OF IDENTIFICATION MARKINGS.
--- SEE SPECIFICATION No. 357 FOR DETAILS.



① 225 LB BUOY BELL (SECTION)



② 85 LB BUOY BELL (SECTION)

REV.	DATE	APPR.	DESCRIPTION	BY
F	3-27-00	WD	ADDED MISSING DIMENSIONS TO TABLE.	S.M.
E	5-3-94	SW	MODIFIED LOCATION OF I.D. MARKING ON GONGS.	S.M.
D	8-3-93	SW	MODIFIED COPPER SILICON ALLOY REQUIRED & I.D. NOTE.	S.M.
C	11-12-92	WD	MODIFIED NOTES.	S.M.
B	4-10-91	SW	REDRAWN USING AUTOCAD	DAG
A	6-18-90	WD	REVISED WEIGHT AND DIAMETER TOLERANCES.	W.D.

DESIGNED: CRA DRAWN: GWB TRACED: DAG CHECKED: LJB REVIEWED BY:	U.S. COAST GUARD HEADQUARTERS CIVIL ENGINEERING BUOY BELLS & GONGS BELLS
P. J. Glahe CH. B & S SEC. REVIEWED BY:	APPROVED: Loyd R. Lomer CHIEF OF DIVISION
R. Bates CH. SIG. BR. REVIEWED BY:	DATE: 5-13-81
UNLESS OTHERWISE SPECIFIED: ALL DIMENSIONS ARE IN INCHES. TOLERANCES: DIM. DEC ±.125, FR ±1/8 ANG. 30°	DRAWING NUMBER: 120994 REV. F SCALE: 1/2 SIZE SHEET 1 OF 2

BILL OF MATERIALS

ITEM NO.	NO. REQ.	DESCRIPTION	MATL.	REMARKS
4	1	GONG No. 1	COPPER	SEE NOTES
5	1	GONG No. 3	COPPER	SEE NOTES
6	1	GONG No. 4	COPPER	SEE NOTES

NOTE:

1. SEE LATEST REVISION OF U.S.C.G CIVIL ENGINEERING SPECIFICATION No. 357 FOR FABRICATION REQUIREMENTS.

2. MATERIAL—BELLS AND GONGS

CAST COPPER SILICON ALLOY MEETING
ASTM B-584, COPPER ALLOY UNS No. C87600

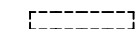
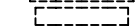
3. WEIGHT TOLERANCE

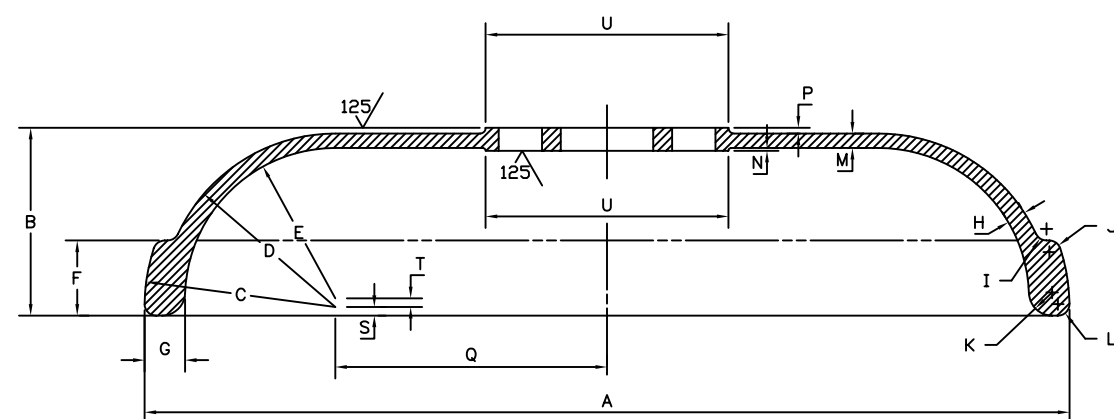
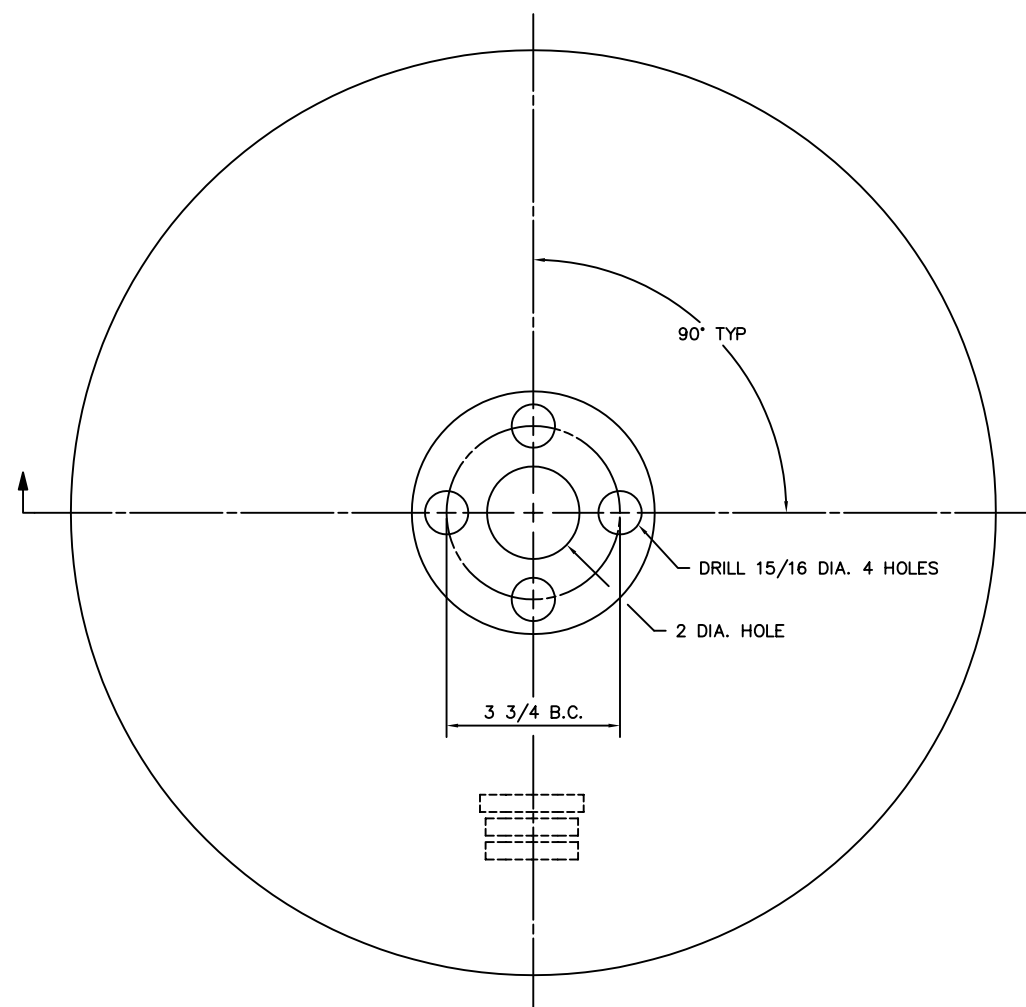
ACTUAL WEIGHT OF EACH GONG SHALL NOT VARY FROM SPECIFIED WEIGHT BY MORE THAN THE FOLLOWING:

GONG No. 1: 60 LB ± 5 LB

GONG No. 3: 70 LB ± 5 LB

GONG No. 4: 75 LB ± 5 LB

 LOCATION OF IDENTIFICATION MARKINGS.
 SEE SPECIFICATION No. 357 FOR DETAILS.



④ ⑤ ⑥ GONG (SECTION)

GONG	A	B	C	D	E	F	G	H	I	J	K	L	M	N	P	Q	S	T	U
No. 1	20	4 1/16	4 1/8	3 3/4	3 1/4	1 5/8	7/8	7/16	1/2	1/2	1/2	1/4	5/16	1/16	1/8	5 7/8	3/16	3/16	5 1/4
No. 3	20	4 1/16	4 1/8	3 3/4	3 1/8	1 5/8	1	1/2	1/2	1/2	1/2	1/4	3/8	1/16	1/8	5 7/8	3/16	1/4	5 1/4
No. 4	20	4 1/16	4 1/8	3 3/4	3	1 5/8	1 1/8	9/16	1/2	1/2	1/2	1/4	3/8	1/16	1/8	5 7/8	3/16	3/8	5 1/4

F	3-27-00	wd	ADDED MISSING DIMENSIONS TO TABLE.	S.M.
E	5-3-94	SW	MODIFIED LOCATION OF I.D. MARKINGS.	S.M.
D	8-3-93	SW	MODIFIED COPPER SILICON ALLOY REQUIRED & I.D. NOTE.	S.M.
C	11-12-92	WD	MODIFIED NOTES.	S.M.
B	4-11-91	SW	REDRAWN USING AUTOCAD	DAG
A	6-15-90	WD	SEE SHEET 1.	W.D.

REV.	DATE	APPR.	DESCRIPTION	BY
DESIGNED:	CRA		U.S. COAST GUARD	HEADQUARTERS
DRAWN:	GWB		CIVIL ENGINEERING	
TRACED:	DAG		BUOY BELLS & GONGS	
CHECKED:	LJB		GONGS	
REVIEWED BY:	P. J. Glahe			
	CH. B & S SEC.			
REVIEWED BY:	R. Bates			
	CH. SIG. BR.			
REVIEWED BY:	APPROVED:	Loyd R. Lomer	DATE	5-13-81
		CHIEF OF DIVISION		
UNLESS OTHERWISE SPECIFIED: ALL DIMENSIONS ARE IN INCHES. TOLERANCES: DIM. DEC ±.125, FR ±1/8 ANG. ±30°			DRAWING NUMBER	REV.
			120994	F
			SCALE: 1/2 SCALE	SHEET 2 OF 2