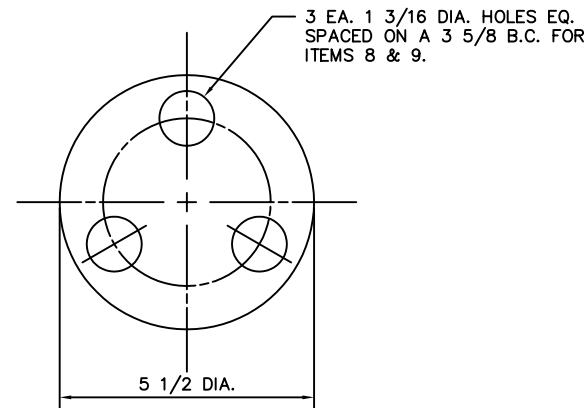
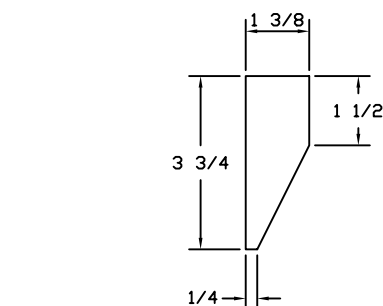


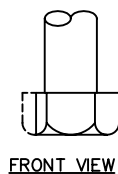
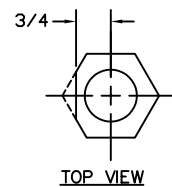
① BELL STAND ASSEMBLY  
(FOR 225 LB. BELL)



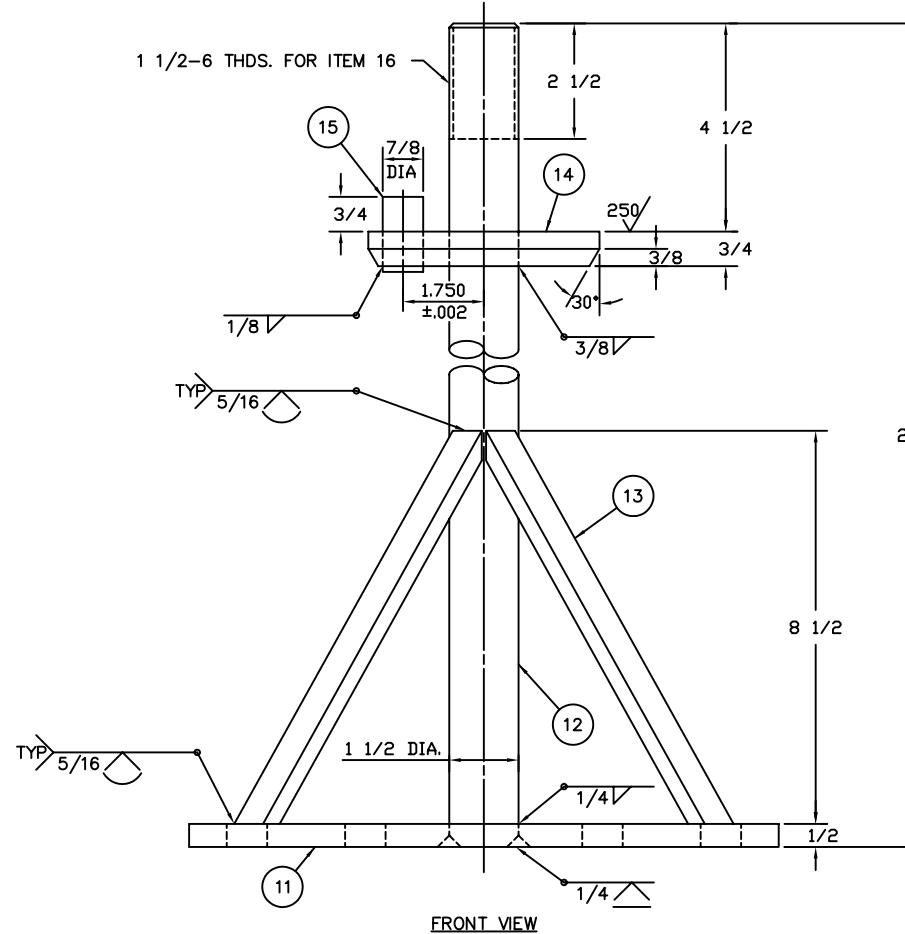
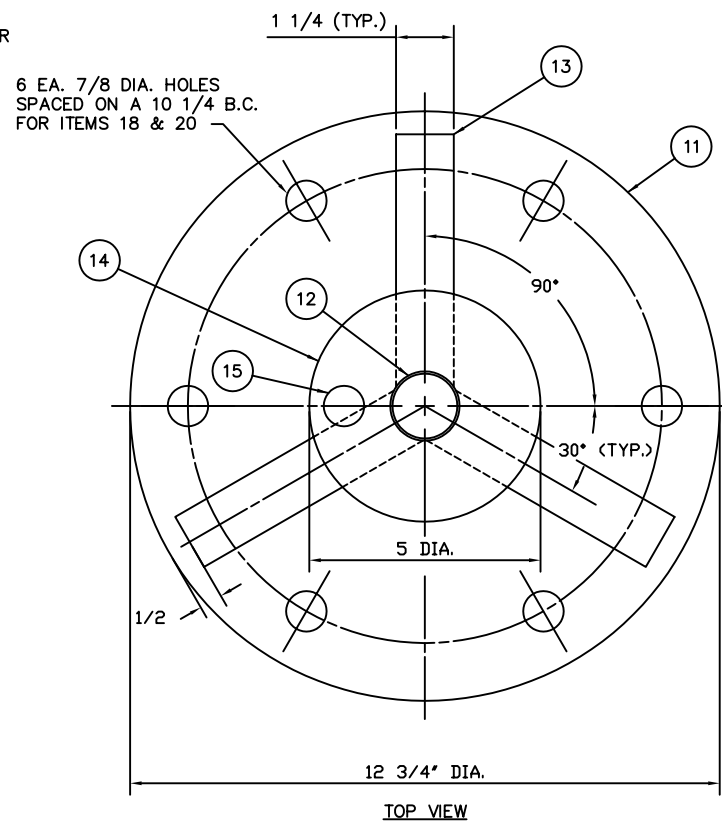
⑦ WASHER PLATE



⑤ GUSSET PLATE



⑧ HEX HEAD BOLT  
(MODIFIED AS SHOWN)



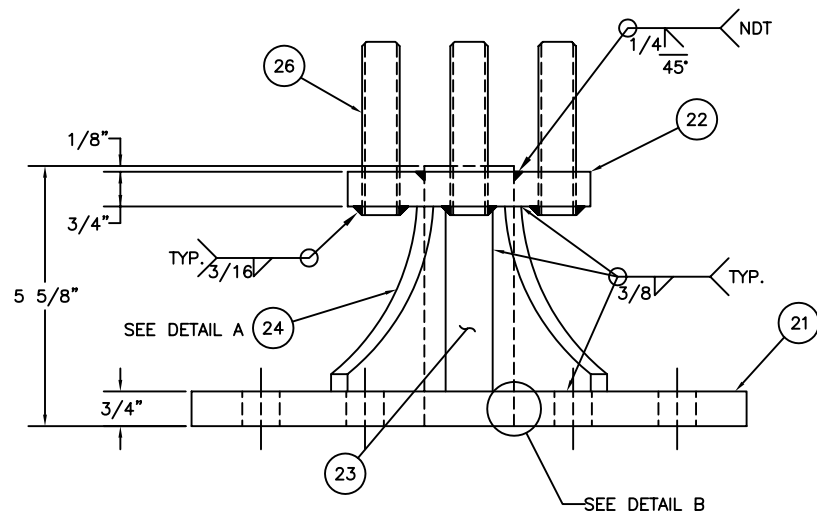
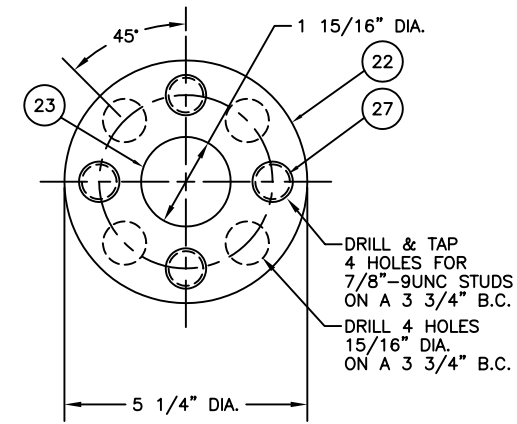
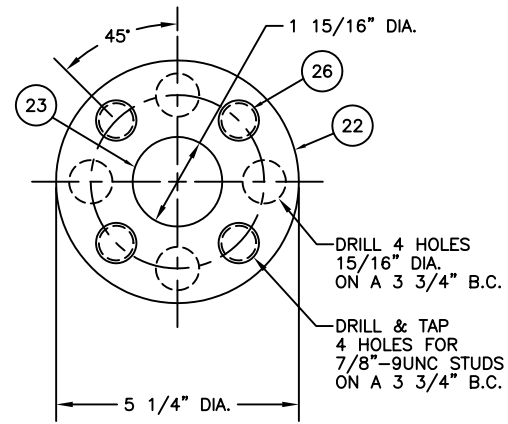
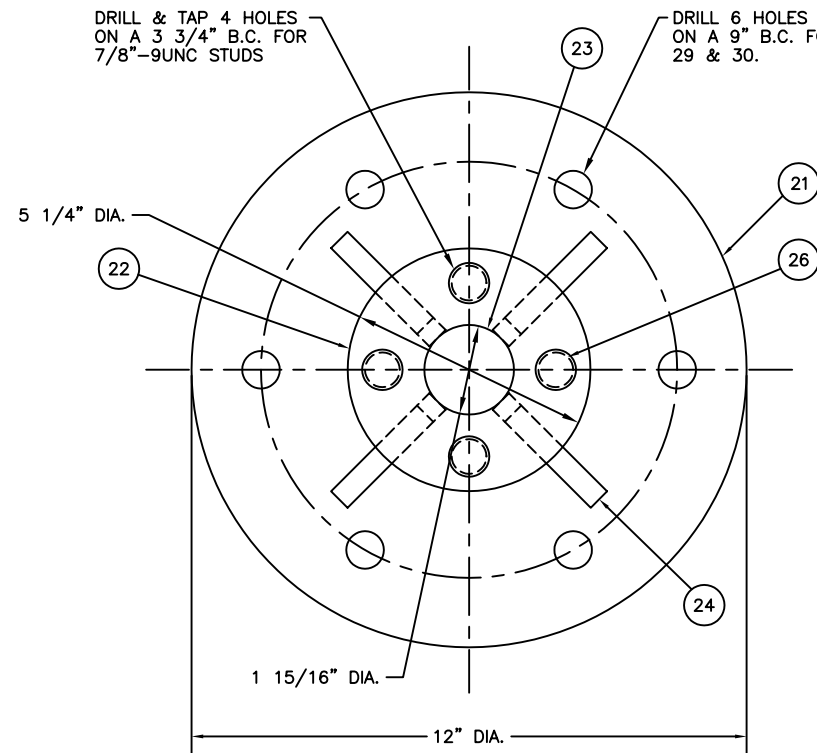
BELL STAND ASSEMBLY  
(FOR 85 LB. BELL)

BILL OF MATERIALS				
ITEM NO.	NO. REQ.	DESCRIPTION	MATL.	REMARKS
1	1	BELL STAND ASS'Y	-	FOR 225 LB. BELL
2	1	BASE PLATE	STEEL	1/2 THK.
3	1	POST	STEEL	2 DIA.
4	3	BAR BRACE	STEEL	1/2 x 1 1/2 WD.
5	3	GUSSET PLATE	STEEL	1/4 THK.
6	1	TOP PLATE	STEEL	1 THK.
7	1	WASHER PLATE	STEEL	3/16 THK.
8	3	HEX HEAD BOLT	STAIN. STEEL	1 1/8-7 x 6 LG.
9	3	HEX STOP NUT	STAIN. STEEL	1 1/8-7
10	1	BELL STAND ASS'Y	-	FOR 85 LB. BELL
11	1	BASE PLATE	STEEL	1/2 THK.
12	1	POST	STEEL	1 1/2 DIA.
13	3	BRACE	STEEL	5/16 THK.
14	1	TOP PLATE	STEEL	3/4 THK.
15	1	LOCATING PIN	STEEL	7/8 DIA. x 1-5/8 LG.
16	1	HEX STOP NUT	STAIN. STEEL	1-1/2-6
17	6	HEX HEAD MACH. BOLT	STAIN. STEEL	3/4-10 x 2-3/4 LG.
18	6	HEX SELF-LOCKING NUT	STAIN. STEEL	3/4-10
19	2	ISOLATION PAD	RUBBER	1-5/8 I.D.x5-1/2 O.D.
20	6	HEX HEAD MACH. BOLT	STAIN. STEEL	3/4-10 x 2 LG.

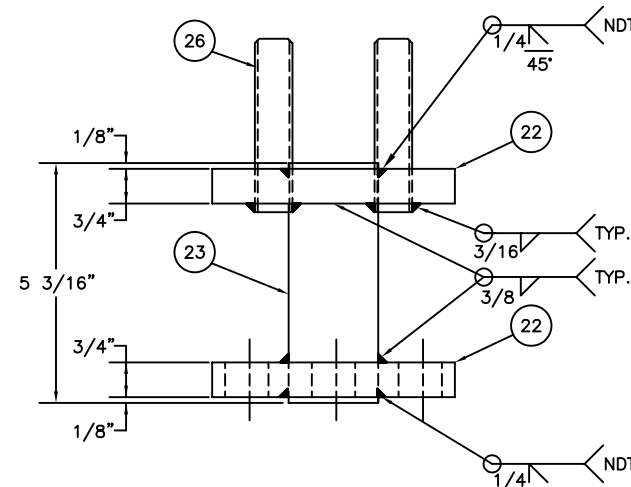
NOTE:

- SEE LATEST REVISION OF U.S.C.G. CIVIL ENGINEERING SPECIFICATION No. 362 FOR FABRICATION REQUIREMENTS.

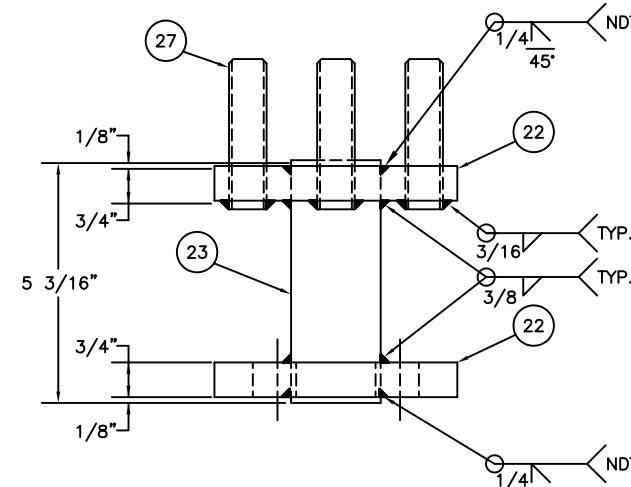
F	12-10-93	SW	SEE SHEET 2	S.M.
E	11-12-92	WD	MODIFIED NO. REQ. FOR ITEM 18 AND NOTE 1. DELETED NOTES 2 THRU 4.	S.M.
D	4-8-91	SW	REDRAWN USING AUTOCAD	DAG
C	3-24-87	SW	SHEET 1 REDRAWN INCLUSIVE OF ALL PREVIOUS REVISIONS. DELETED REFS. TO OCEAN ENG. DIV.	W.D.
REV.	DATE	APPR.	DESCRIPTION	BY
DESIGNED:	K.H.		U.S. COAST GUARD	HEADQUARTERS
DRAWN:	W.D.		CIVIL ENGINEERING	
TRACED:			BUOY BELL & GONG STANDS	
CHECKED:			BELL STANDS	
REVIEWED BY:				
REVIEWED BY:	S. D. Walker			
REVIEWED BY:	G-ECV-3B			
REVIEWED BY:		APPROVED:	D. H. DeBok	DATE: 3-24-87
UNLESS OTHERWISE SPECIFIED: ALL DIMENSIONS ARE IN INCHES. TOLERANCES: DIM. DEC ±.125, FR ±1/8 ANG. ±1°			DRAWING NUMBER 120998	REV. F
SCALE: 6"=1'-0"			SHEET 1 OF 2	



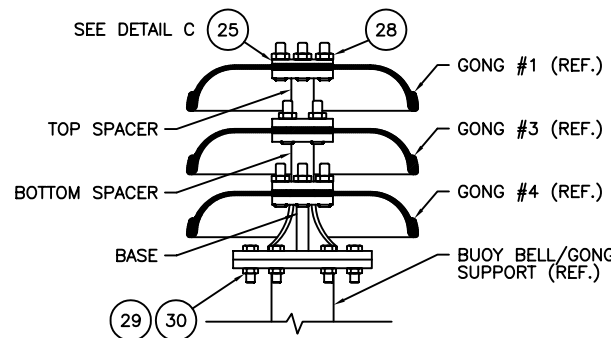
**BASE**  
SCALE: HALF



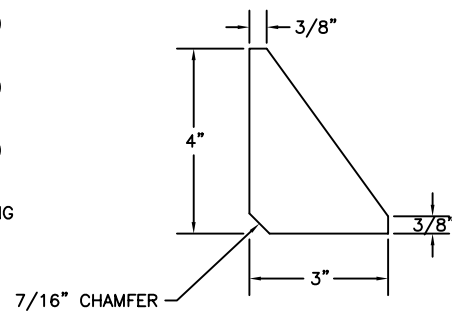
**BOTTOM SPACER**  
SCALE: HALF



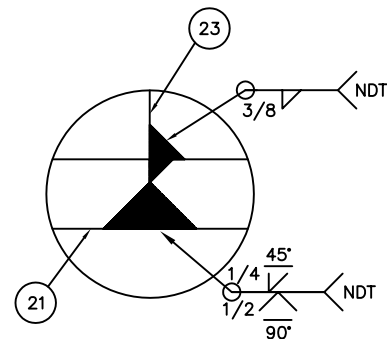
**TOP SPACER**  
SCALE: HALF



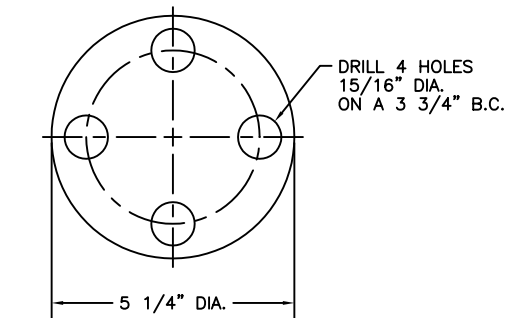
**ASSEMBLED VIEW**  
SCALE: 1 1/2"=1'-0"



**24 DETAIL A**  
SCALE: HALF



**23 DETAIL B**  
SCALE: FULL



**25 DETAIL C**  
SCALE: HALF

BILL OF MATERIALS				
ITEM NO.	NO. REQ.	DESCRIPTION	MATL.	REMARKS
21	1	BASE PLATE	STEEL	12 DIA. x 3/4 THK.
22	5	GONG SUPPORT PLATE	STEEL	5-1/4 DIA. x 3/4 THK.
23	3	POST	SEE NOTE 2	1-15/16 DIA.
24	4	GUSSETS	STEEL	1/2 THK.
25	1	CAP PLATE	STEEL	5-1/4 DIA. x 3/8 THK.
26	8	STUD (TBE)	STAIN. STEEL	7/8-9 UNC x 3-3/4 LG.
27	4	STUD (TBE)	STAIN. STEEL	7/8-9 UNC x 3-1/4 LG.
28	12	STOP NUT	STAIN. STEEL	7/8-9 UNC THD.
29	6	HEX HEAD MACH. BOLT	STAIN. STEEL	3/4-10 UNC x 2-3/4 LG.
30	6	HEX NUT (NYLOCK)	STAIN. STEEL	3/4-10

**NOTES:**

- SEE THE LATEST REVISION OF CIVIL ENGINEERING SPECIFICATION No. 362 FOR THE FABRICATION REQUIREMENTS.
- THE GONG POST SHALL BE AISI 1018 COLD DRAWN STEEL.

REV.	DATE	APPR.	DESCRIPTION	BY
F	12-10-93	SW	CHANGED GONG STAND TO A STEEL FABRICATED ITEM.	S.M.
E	11-12-92	SW	SEE SHEET 1.	S.M.
D	4-8-91	SW	REDRAWN USING AUTOCAD.	DAG
C	3-24-87	SW	SEE SHEET 1.	WD
B	5-27-81	SW	CHANGED SPEC. FOR STAINLESS STEEL HARDWARE.	
A	2-16-81	SW	RENUMBERED ALL ITEMS AND ADDED ITEM 29 & 30.	GWB

DESIGNED: CRA DRAWN: GWB TRACED: DAG CHECKED: REVIEWED BY: P. J. Glahe CH. B & S SECTION REVIEWED BY: R. Bates CH. SIG. BR. REVIEWED BY:	U.S. COAST GUARD HEADQUARTERS CIVIL ENGINEERING BUOY BELL & GONG STANDS GONG STAND	APPROVED: L. R. Lomer CHIEF OF DIVISION	DATE 6-22-81
UNLESS OTHERWISE SPECIFIED: ALL DIMENSIONS ARE IN INCHES. TOLERANCES: DIM. ±1/16 ANG. ±30'		DRAWING NUMBER 120998	REV. F
PLOTING SCALE: 6"=1'-0"		SCALE: 6"=1'-0"	SHEET 2 OF 2