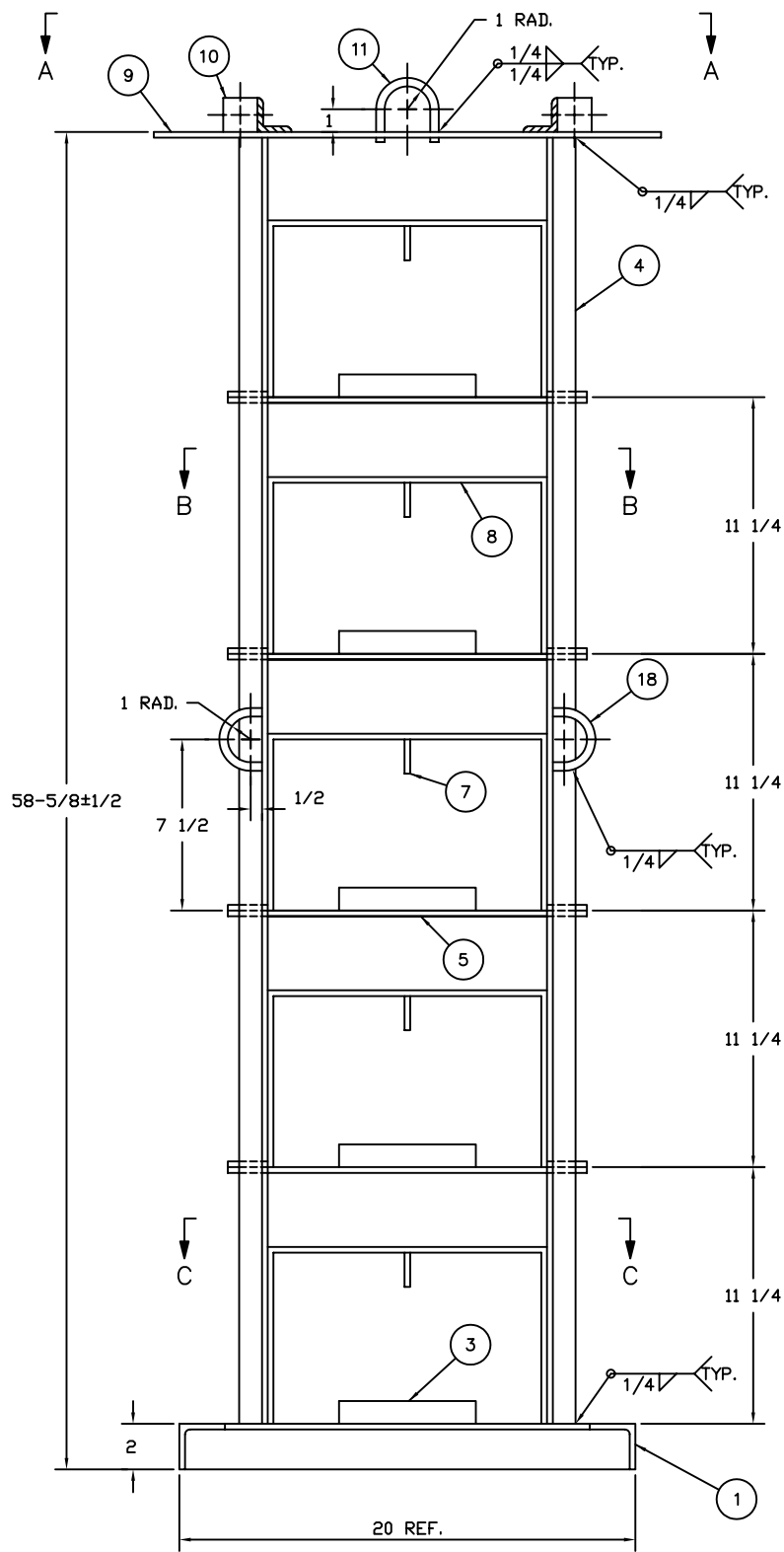
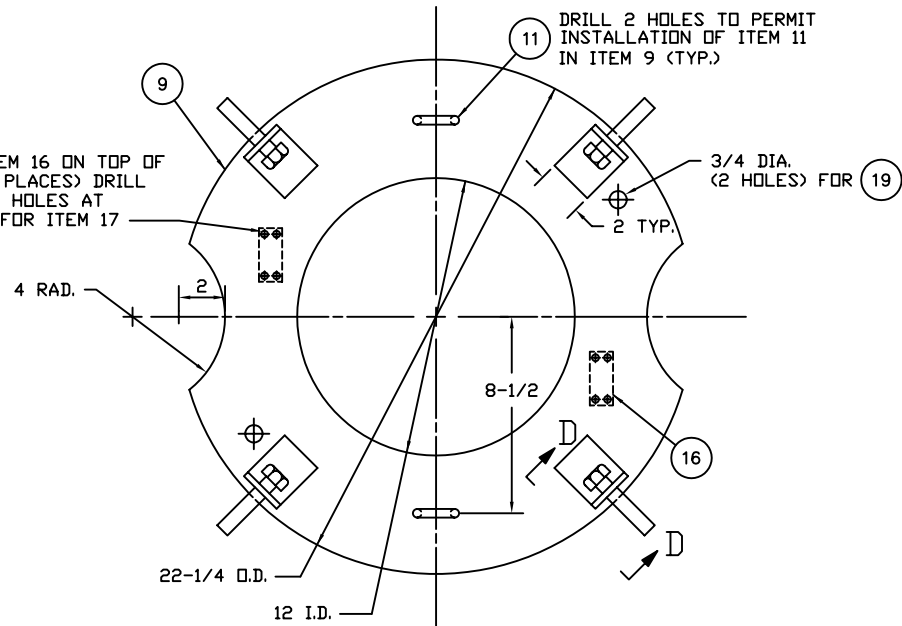


16 TERMINAL BOARD
SCALE: NONE

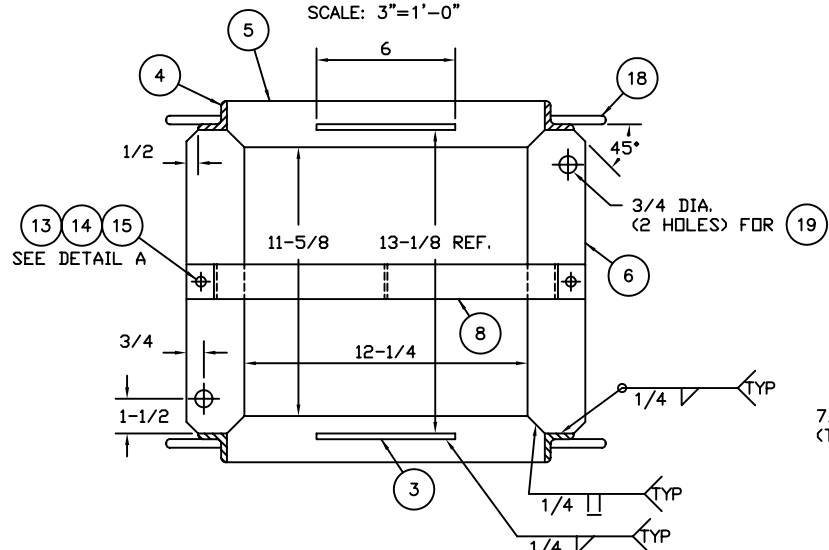


BATTERY RACK ASSEMBLY
SCALE: 3"=1'-0"

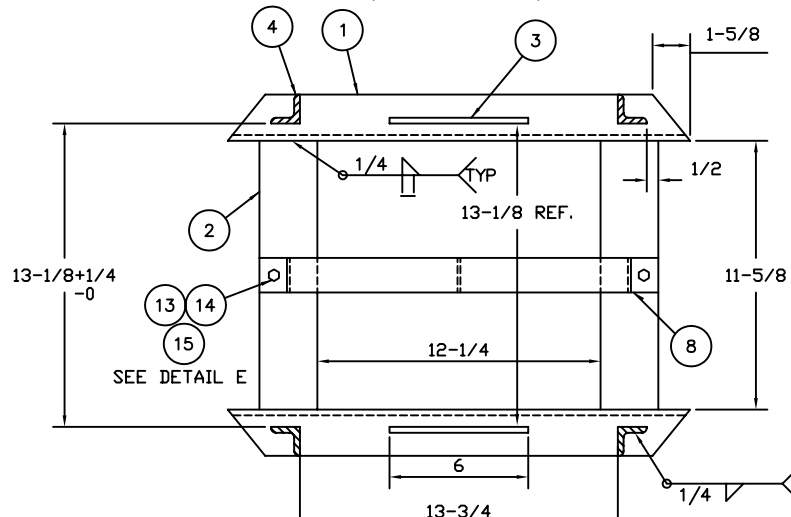
LOCATE ITEM 16 ON TOP OF ITEM 9 (2 PLACES) DRILL AND TAP 4 HOLES AT ASSEMBLY FOR ITEM 17



SECTION A-A
SCALE: 3"=1'-0"



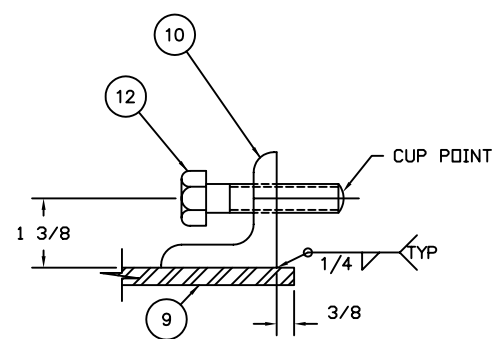
SECTION B-B
SCALE: 3"=1'-0"
(TYP. 4 LOCATIONS)



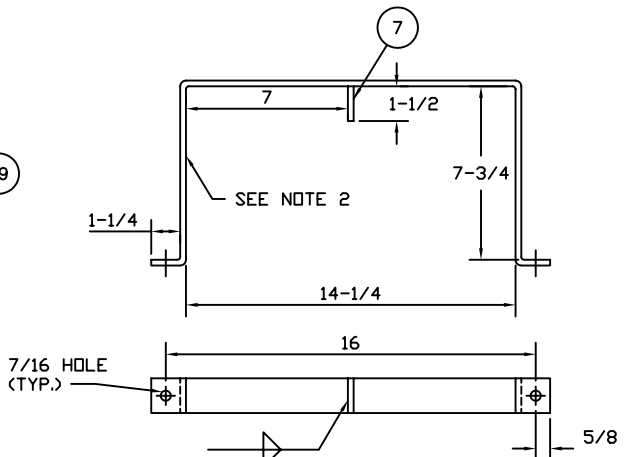
SECTION C-C
SCALE: 3"=1'-0"

DRILL 2 HOLES TO PERMIT INSTALLATION OF ITEM 11 IN ITEM 9 (TYP.)

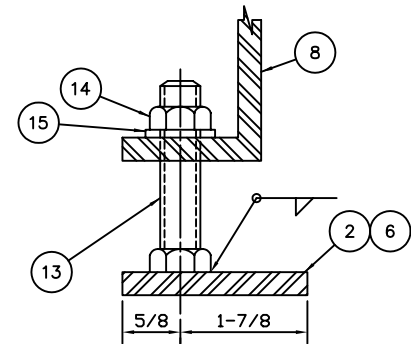
3/4 DIA. (2 HOLES) FOR 19



SECTION D-D
SCALE: NONE



8 HOLD DOWN BAR
SCALE: NONE



DETAIL A
SCALE: NONE

BILL OF MATERIALS

ITEM NO.	REQ.	DESCRIPTION	MATL.	REMARKS
1	2	BASE ANGLE	STEEL	L 1/4x2x2
2	2	BASE STRIP	STEEL	1/4x2-1/2
3	10	SIDE STRIP	STEEL	1/4 THK., 1 WIDE
4	4	LEG ANGLE	STEEL	L 1/4x1-1/4x1-1/4
5	8	FRONT PLATE	STEEL	1/4x2
6	8	SIDE PLATE	STEEL	1/4x2-1/2
7	5	HOLD DOWN TAB	STEEL	1/4x1-1/2x1-1/2
8	5	HOLD DOWN BAR	STEEL	1/4x1-1/2
9	1	TOP PLATE	STEEL	3/8 THK.
10	4	TOP ANGLE	STEEL	L 1/2x2-1/2x2-1/2
11	2	LIFTING EYE	STEEL	3/8 DIA. ROD
12	4	HEX HEAD SCREW	STAIN. STEEL	5/8-11x3 LG.
13	10	HEX HEAD SCREW	STAIN. STEEL	3/8-16x2 LG.
14	10	HEX NUT	STAIN. STEEL	3/8-16
15	10	SPLIT RING LOCK WASHER	STAIN. STEEL	3/8
16	2	TERMINAL BOARD	PHENOLIC	TYPE 39TB5 MIL-T-55164/3
17	8	PAN HEAD MACHINE SCREW	STAIN. STEEL	8-32x3/4 LG.
18	4	SIDE LIFTING EYE	STEEL	3/8 DIA. ROD
19	10	GROMMETS	RUBBER	
20	5	CUSHION	NEOPRENE	3/16x1-1/2x20 LG.

NOTES:

- THIS RACK IS DESIGNED TO UP HOLD UP TO 10 DELCO 2000 OR ABSOLYTE 12-5000 BATTERIES IN 8 x 26 AND LARGER BUOYS WITH 24 DIA. POCKETS.
- ATTACH ITEM 20 TO ITEM 8 WITH SUITABLE ADHESIVE.
- SEE LATEST REVISION OF U.S.C.G. CIVIL ENGINEERING SPECIFICATION No. 464 FABRICATION REQUIREMENTS.

REV.	DATE	APPR.	DESCRIPTION	BY
I	2-8-96	S.M.	MOD TITLE BLOCK & ITEM 18 CALL OUT IN ASSEMBLY VIEW.	S.M.
H	4-2-91	SW	REDRAWN USING AUTOCAD	DAG
G	1-15-87	SW	SHORTENED ITEM B. LENGTHENED ITEM 13. ADDED ABSOLYTE BATTERIES TO NOTE 1.	W.D.
F			REDRAWN INCLUSIVE OF ALL PREVIOUS REVISIONS.	W.D.
DESIGNED: KH/RB			U.S. COAST GUARD HEADQUARTERS	
DRAWN: WD			CIVIL ENGINEERING	
TRACED: WAG			24" BATTERY RACK ASSEMBLY	
CHECKED: WAG			D. H. DeBok	
REVIEWED BY: R. Boy			12/2/86	
PROJECT ENGINEER			CHIEF, OCEAN ENGINEERING BRANCH	
REVIEWED BY: S. D. Walker			APPROVED:	
G-ECV-3B			DATE	
REVIEWED BY:			DRAWING NUMBER	
UNLESS OTHERWISE SPECIFIED:			121009	
ALL DIMENSIONS ARE IN INCHES.			REV. 1	
TOLERANCES: DIM. (1/8)			SCALE: AS NOTED SHEET 1 OF 1	
ANG. ±1°				