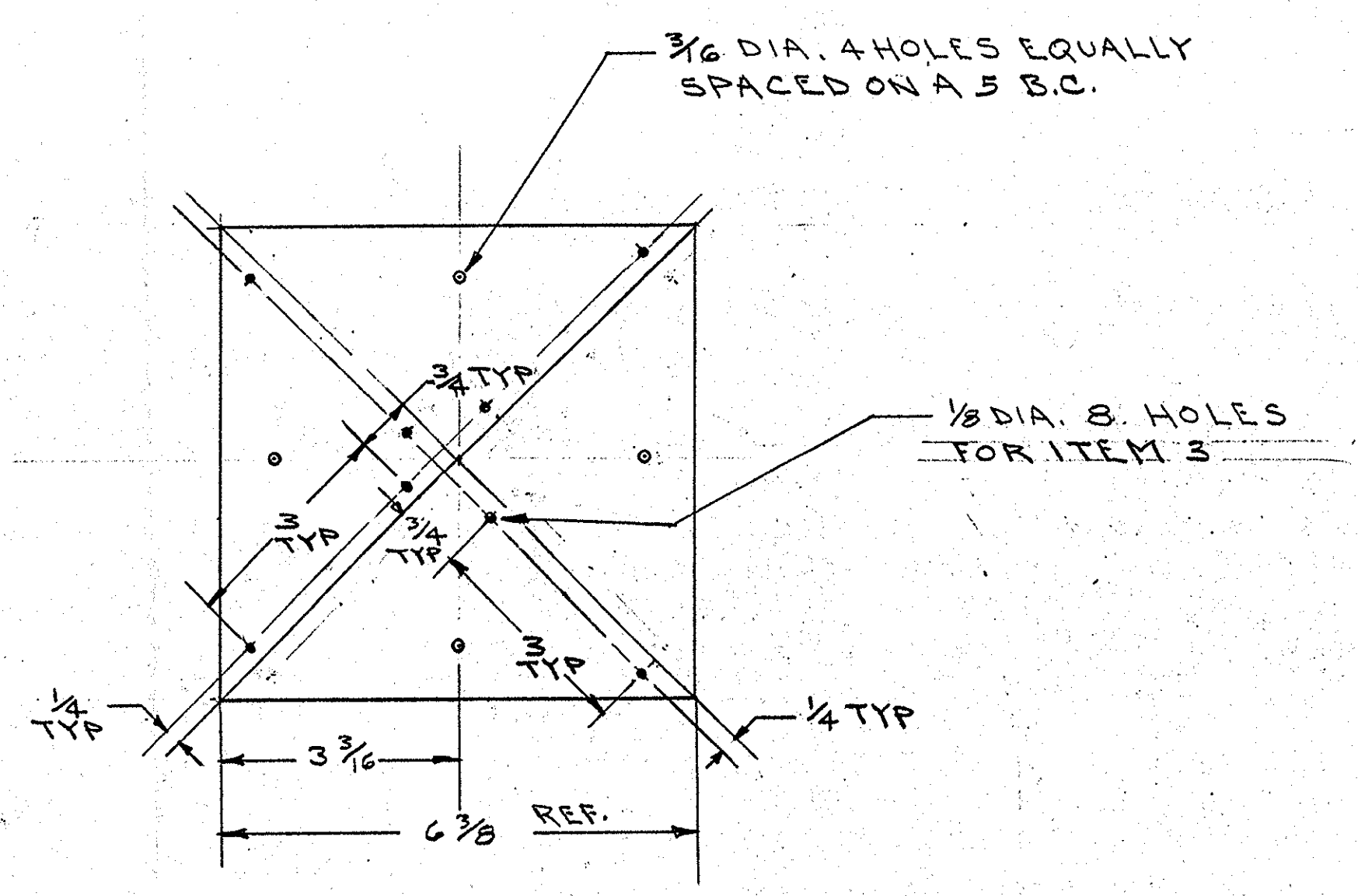
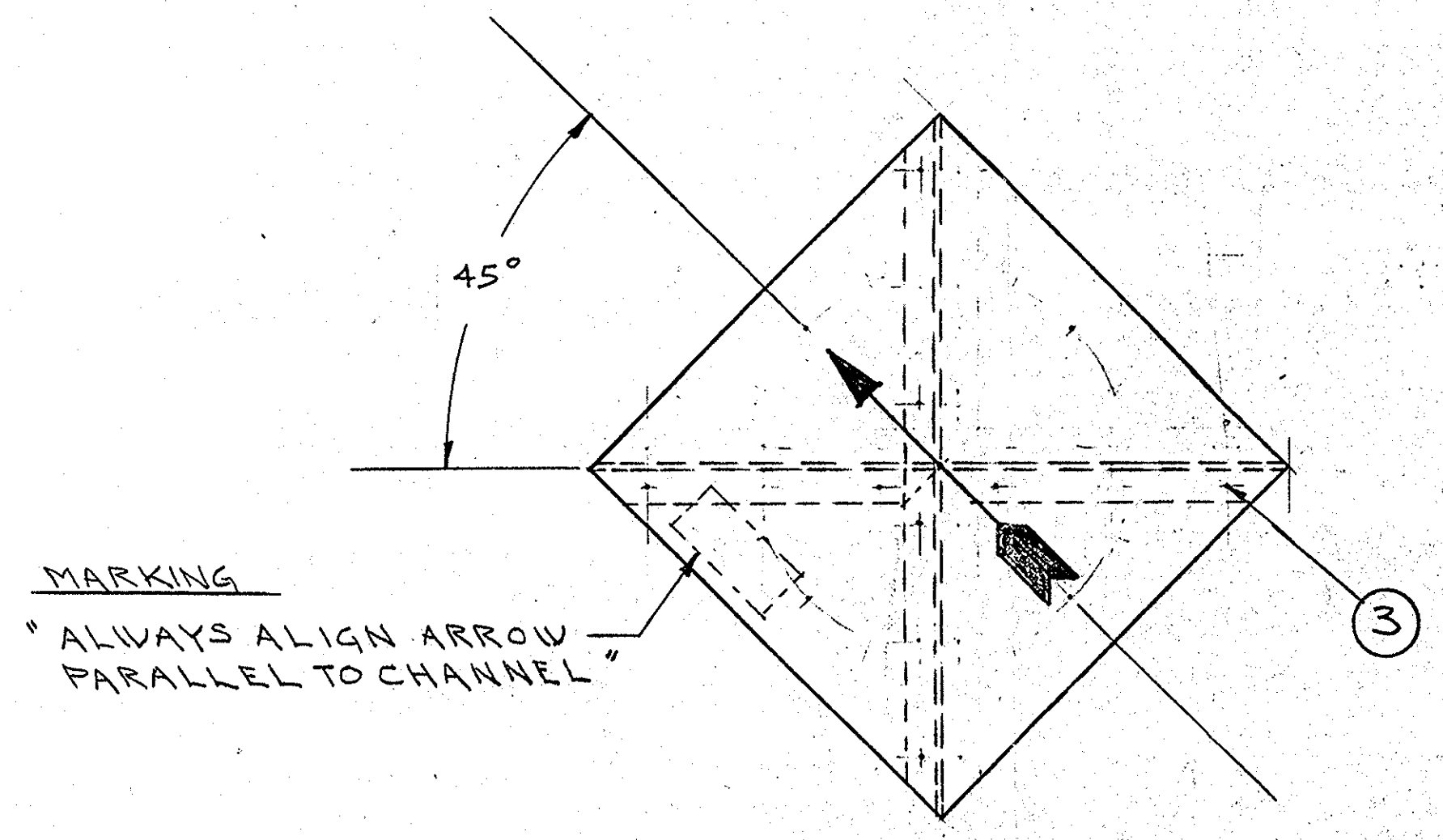
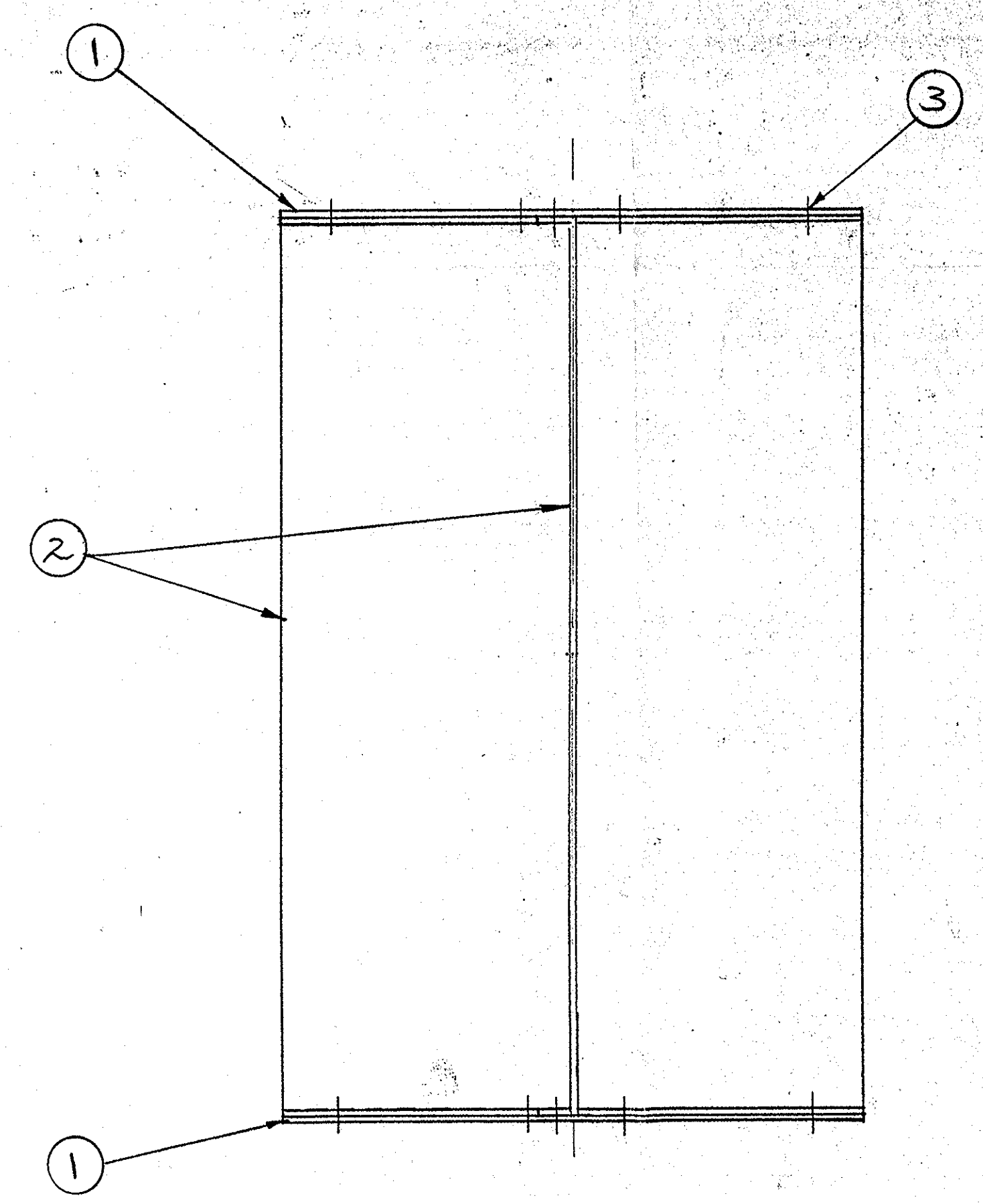


BILL OF MATERIALS

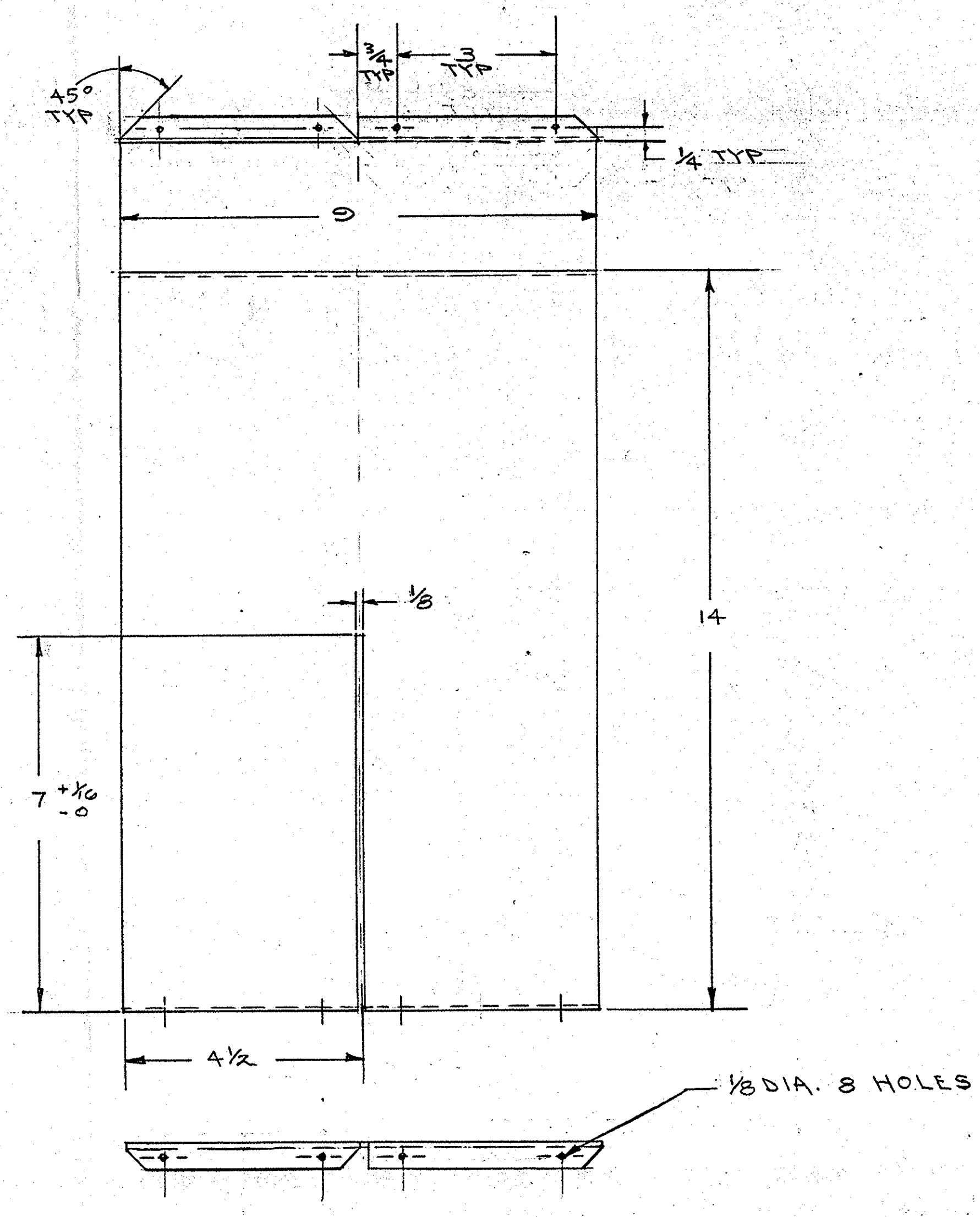
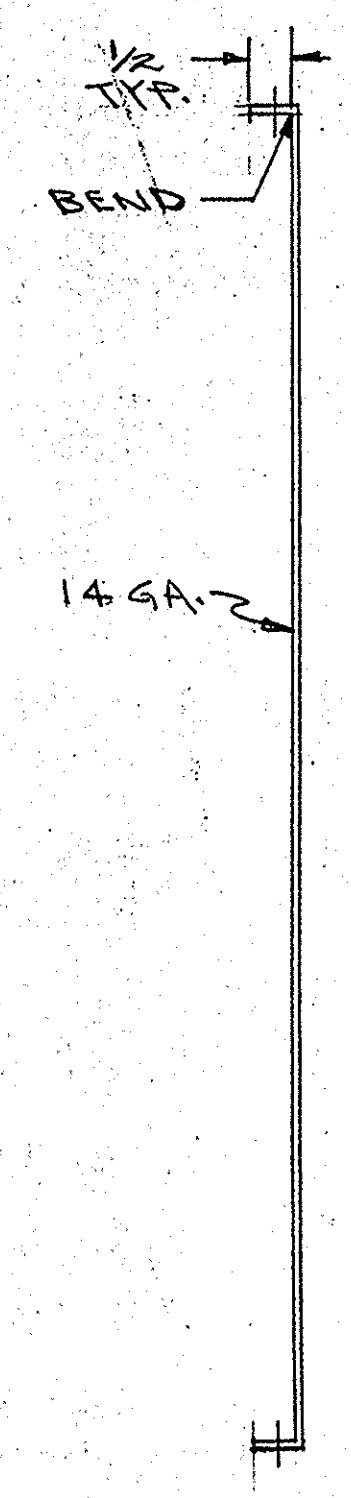
ITEM NO.	NO. REQ'D.	DESCRIPTION	MATL.	REMARKS
1	2	HORIZONTAL PLATE	GALV. STL.	14 GA.
2	2	VERTICAL PLATE	GALV. STL.	14 GA.
3	16	POP RIVET	S. STL.	



① HORIZONTAL PLATE



R/R ASSEMBLY



② VERTICAL PLATE

NOTES:

1. EACH HORIZONTAL PLATE (ITEM 1) SHALL BE PAINTED WITH A BLACK ARROW AND MARKED WITH THE WORDS AS SHOWN.
2. GALV. STL. SH. SHALL BE HOT OR COLD ROLLED COMMERCIAL QUALITY.
3. AFTER CONSTRUCTION THE INTERSECTION ANGLE BETWEEN THE TWO VERTICAL PLATES MUST BE 90 DEGREES ± 1 DEGREE.

REV.	DATE	APPR.	DESCRIPTION	BY
Ⓟ	9/14/83	SW	CHANGED FLANGES ON ITEM 2 FOR MFG. AND MATL. FROM 12 GA. TO 14. ADDED ITEM 3	GWB
Ⓐ	1/14/83	SW	CHANGED 4 HOLES FROM 1/8 TO 3/16 DIA. & CHANGED 1/8 DIA HOLES FROM 12 TO 8.	GWB
DESIGNED: P.J.G.			U.S. COAST GUARD HEADQUARTERS	
DRAWN: G.V.B.			OCEAN ENGINEERING	
TRACED:			MINOR	
CHECKED: SW			A/N STRUCTURE	
REVIEWED BY: P.J. Blake			RADAR REFLECTOR	
REVIEWED BY: G.B. Blake			APPROVED: [Signature]	
REVIEWED BY: G.V.B.			DATE: 7/27/82	
UNLESS OTHERWISE SPECIFIED DIM. ARE IN INCHES			DRAWING NUMBER: 121018	
TOL: DEC. ± .125, FR. ± 1/8, ANG. ± 30'			REV. B	
SCALE: 1/2 SIZE			SHEET 1 OF 1	