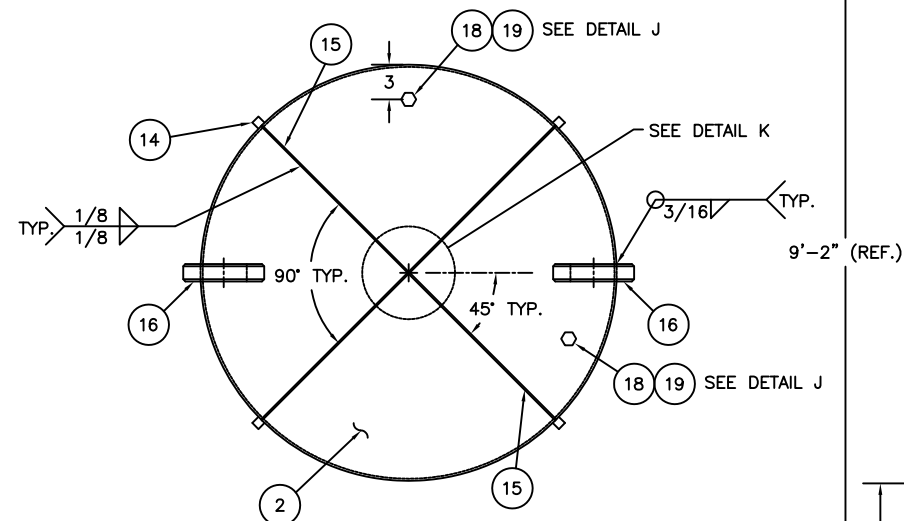
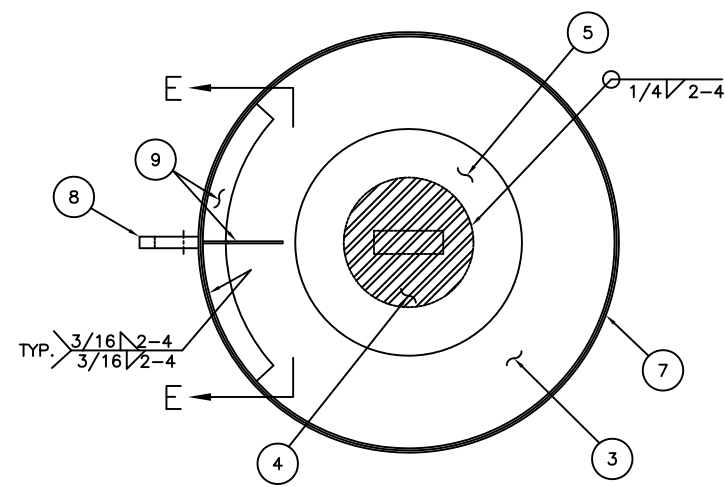


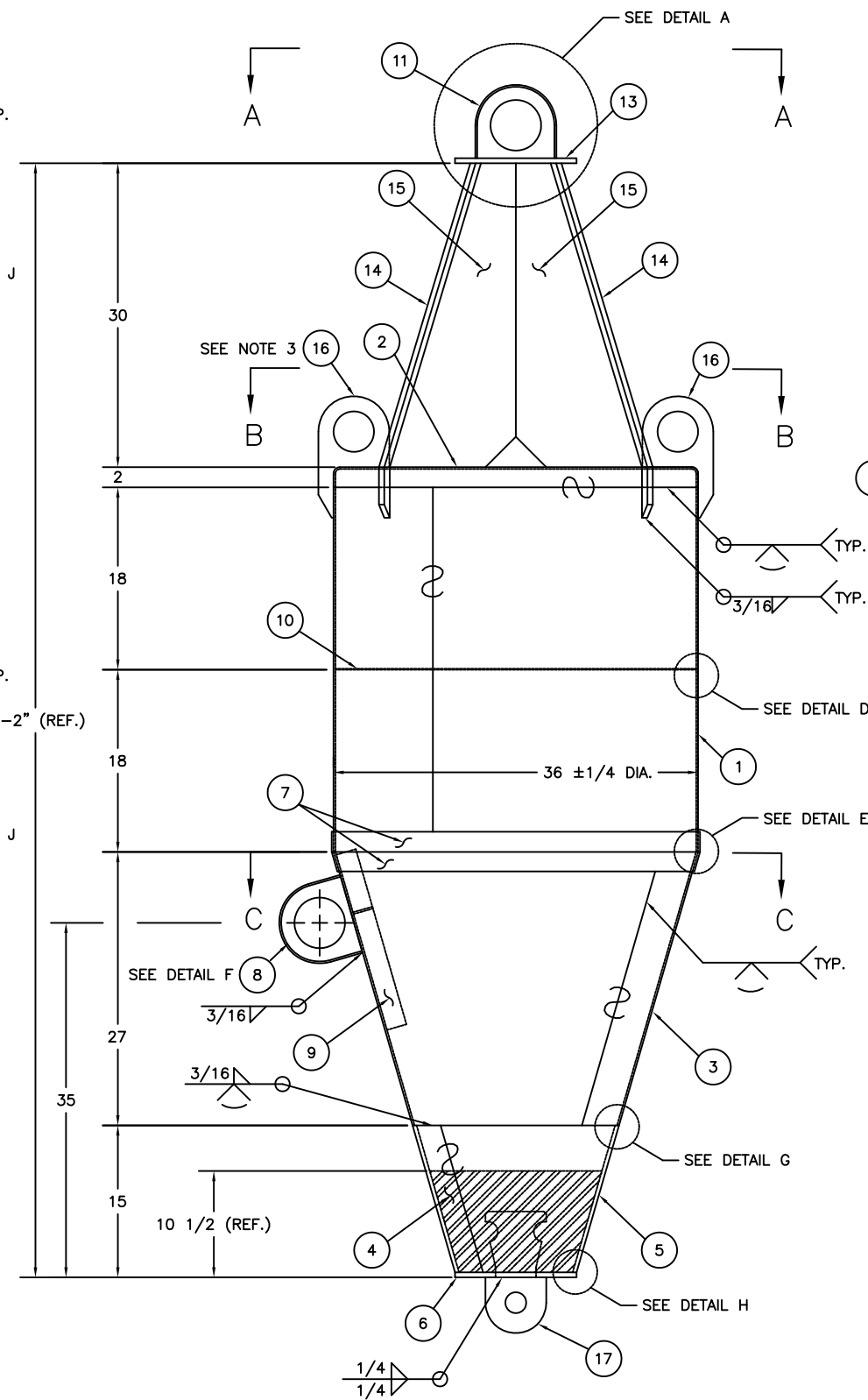
SECTION A-A  
SCALE: 1-1/2"=1'-0"



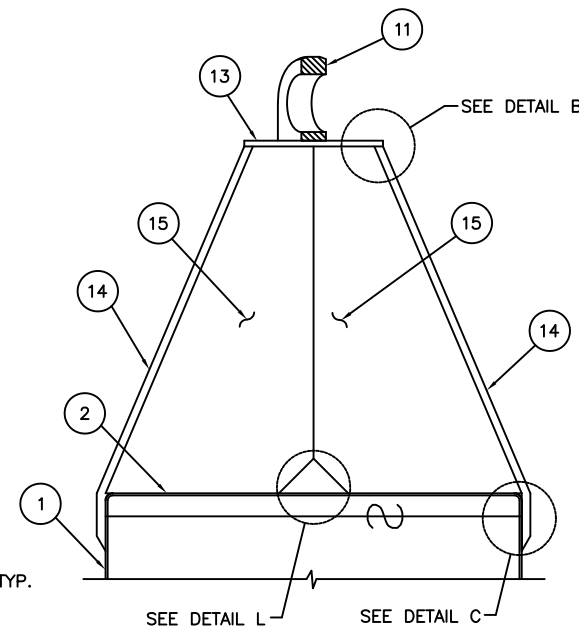
SECTION B-B  
SCALE: 1-1/2"=1'-0"



SECTION C-C  
SCALE: 1-1/2"=1'-0"



3NR  
SCALE: 1-1/2"=1'-0"



SECTION D-D  
SCALE: 1-1/2"=1'-0"

BILL OF MATERIALS				
ITEM NO.	NO. REQ.	DESCRIPTION	MATL.	REMARKS
1	1	BODY WRAPPER	STEEL	3/16 THK.
2	1	FLANGED HEAD	STEEL	36 O.D. x 3/16 THK.
3	1	CONICAL WRAPPER	STEEL	3/16 THK.
4	1	COUNTERWEIGHT	CAST IRON	SEE NOTE 2
5	1	COUNTERWEIGHT WRAPPER	STEEL	3/8 THK.
6	1	COUNTERWEIGHT PLATE	STEEL	12 DIA. x 1/2 THK.
7	2	DOUBLER STRIP	STEEL	3/16 THK. x 2 WD.
8	1	SIDE LIFT EYE	STEEL	1 THK.
9	3	SIDE LIFT EYE STIFFENER	STEEL	3/16 THK. x 2 WD.
10	1	WRAPPER STIFFENER	STEEL	3/16 THK. x 2 WD.
11	1	TOP LIFT EYE	STEEL	1 THK.
12				
13	1	TOP LIFT EYE PLATE	STEEL	12 DIA. x 1/2 THK.
14	4	VERTICAL REFLECTOR BAR	STEEL	3/4 SQ.
15	2	VERTICAL RADAR REFLECTOR	STEEL	1/8 THK.
16	2	TOP HEAD LIFT EYE	STEEL	SEE DRAWING 121140
17	1	MOORING EYE	STEEL	SEE DRAWING 121153
18	2	HALF COUPLING	STAIN. STEEL	3/4 NPT
19	2	PIPE PLUG	STAIN. STEEL	3/4 NPT

NOTES:

- SEE LATEST REVISION OF U.S.C.G. CIVIL ENGINEERING SPECIFICATION No. 464 FOR FABRICATION REQUIREMENTS.
- THE TOTAL WEIGHT OF ITEMS 4, 5, 6, AND 17 SHALL BE 510 LBS. (+5%, -1%).
- THE TOP HEAD LIFT EYE (ITEM 16) DIRECTLY ABOVE THE SIDE LIFT EYE (ITEM 8), SHALL HAVE THE WORD "LIFT" WELDED ON IT.

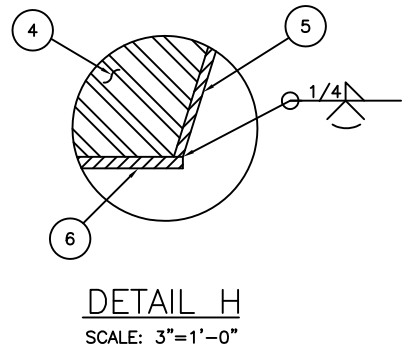
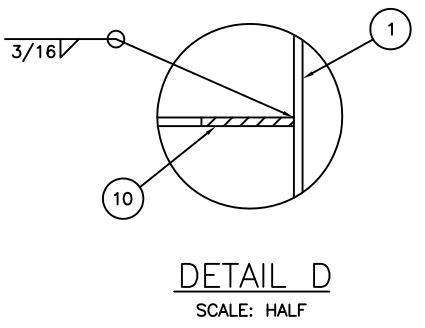
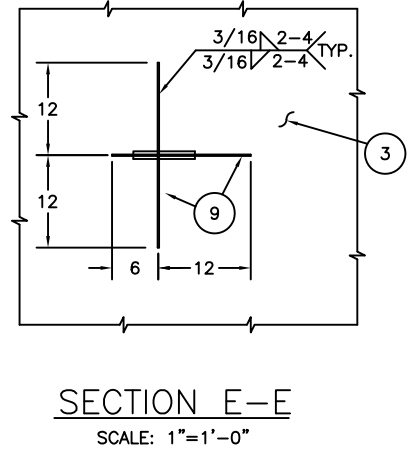
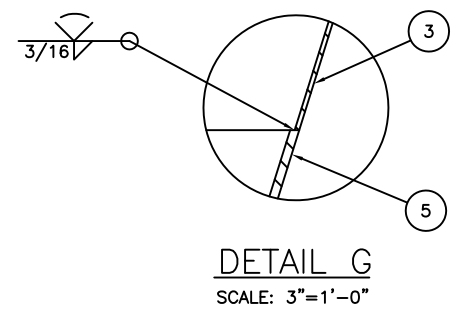
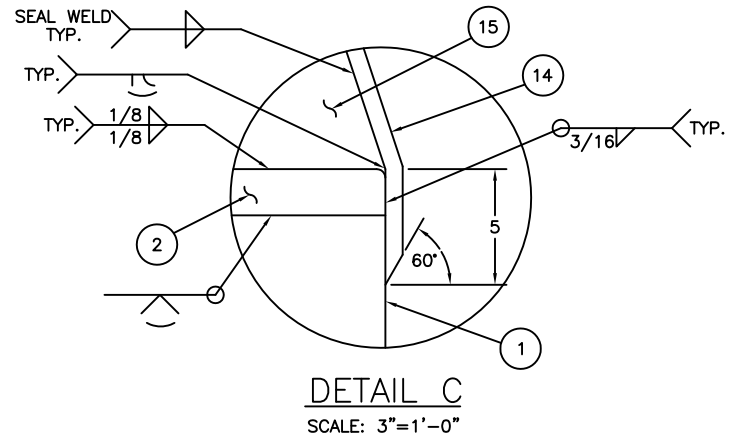
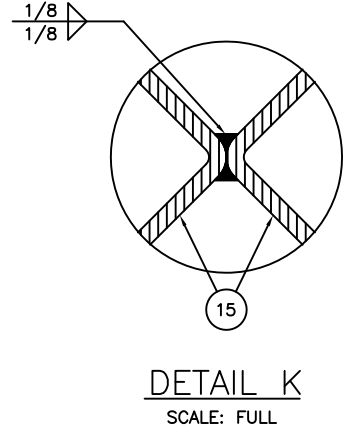
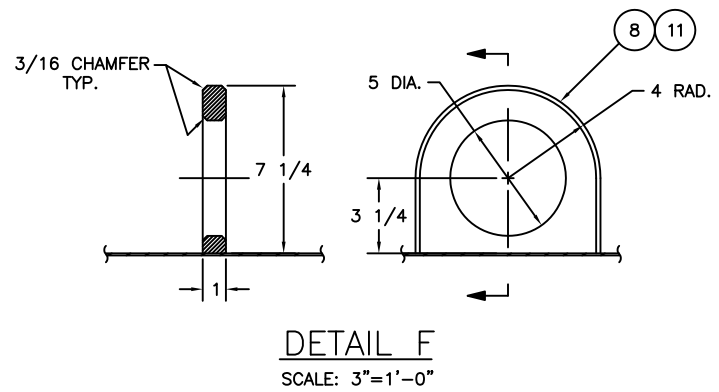
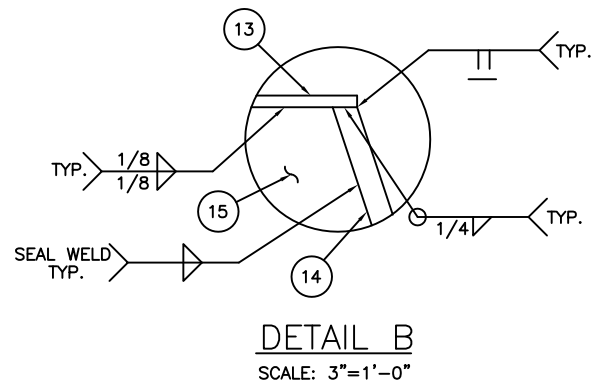
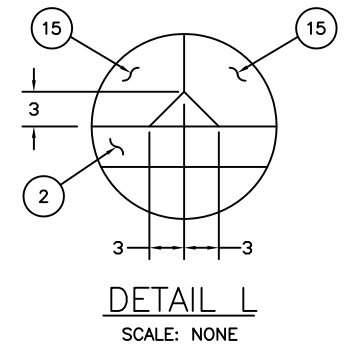
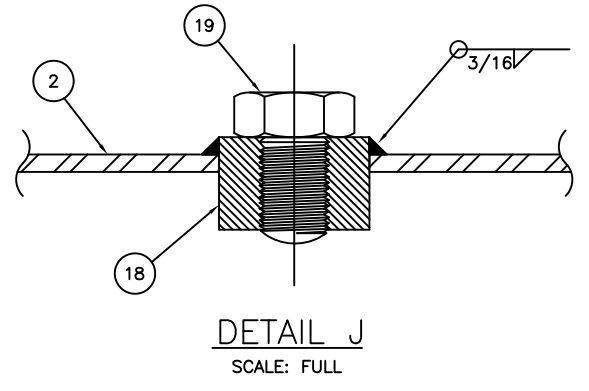
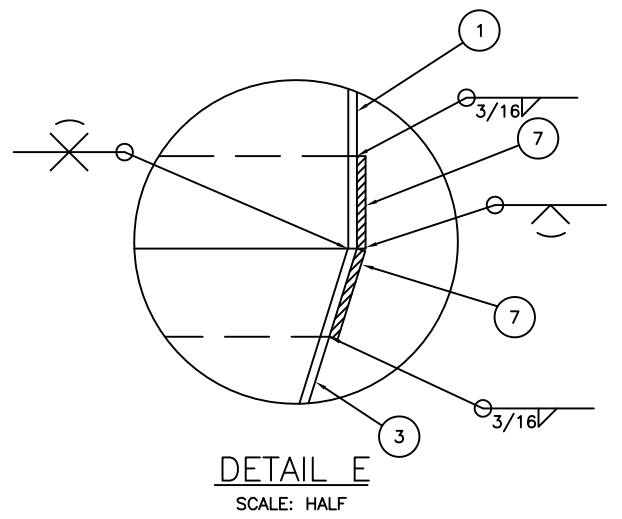
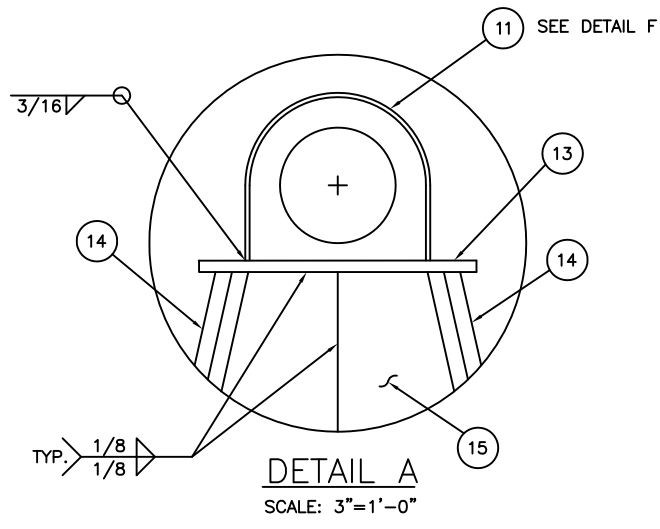
REV.	DATE	APPR.	DESCRIPTION	BY
G	10-20-16	W.D.	ADDED WATER DRAINAGE CUT OUT TO ITEM 15. ADDED DETAIL L.	S.M.
F	6-4-99	S.W.	ADDED ADDITIONAL AIR TEST FITTING (ITEMS 18 & 19).	S.M.
E	2-7-97	SW	REORGANIZED THE DWG. DEL ITEM 12. MOD ITEM 15. MODIFIED WELDS ON RADAR REFLECTOR ASSEMBLY.	S.M.
D	11-1-94	SW	ADDED DETAIL 10. MOD WELDS IN DETAILS 2 & 5. MOD THK & ADDED INNER CHAMFER TO ITEMS 8 & 11.	S.M.
C	12-11-92	WD	MODIFIED NOTES 2, 3, 5, AND ITEMS 4, 11, 18, & 19. ADDED ADDITIONAL ITEM 16. RELOCATED ITEMS 8 & 9.	S.M.
B	11-6-91	SW	MODIFIED NOTE 3.	S.M.
A	3-29-91	SW	REDRAWN USING AUTOCAD.	ANP

DESIGNED: R.B.  
DRAWN: W.D.  
TRACED: S.M.  
CHECKED: R.B.  
REVIEWED BY: R. Boy  
PROJECT ENGINEER  
REVIEWED BY: S.D. Walker  
G-ECV-3B

U.S. COAST GUARD HEADQUARTERS  
CIVIL ENGINEERING  
1988 TYPE  
THIRD CLASS NUN BUOY  
(3NR)

APPROVED: James D. Garrison  
CHIEF, OCEAN ENGINEERING BRANCH  
DATE: 7 Apr 88

UNLESS OTHERWISE SPECIFIED: ALL DIMENSIONS ARE IN INCHES. TOLERANCES: DIM. ±1/8 ANG. ±1°	DRAWING NUMBER 121112	REV. G
SCALE: AS NOTED	SHEET 1 OF 2	



REV.	DATE	APPR.	DESCRIPTION	BY
G	10-20-16	W.D.	ADDED WATER DRAINAGE CUT OUT TO ITEM 15. ADDED DETAIL L.	S.M.
F	6-4-99	S.W.	ADDED ADDITIONAL AIR TEST FITTING (ITEMS 18 & 19).	S.M.
E	2-7-97	SW	REORGANIZED THE DWG. DEL ITEM 12. MOD ITEM 15. MODIFIED WELDS ON RADAR REFLECTOR ASSEMBLY.	S.M.
D	11-1-94	SW	ADDED DETAIL 10. MOD WELDS IN DETAILS 2 & 5. MOD THK & ADDED INNER CHAMFER TO ITEMS 8 & 11.	S.M.
C	12-11-92	WD	MODIFIED NOTES 2, 3, 5, AND ITEMS 4, 11, 18, & 19. ADDED ADDITIONAL ITEM 16. RELOCATED ITEMS 8 & 9.	S.M.
B	11-6-91	SW	MODIFIED NOTE 3.	S.M.
A	3-29-91	SW	REDRAWN USING AUTOCAD.	ANP

DESIGNED: R.B.	U.S. COAST GUARD	HEADQUARTERS
DRAWN: W.D.	CIVIL ENGINEERING	
TRACED: S.M.	1988 TYPE	
CHECKED: R.B.	THIRD CLASS NUN BUOY	
REVIEWED BY:	(3NR)	
R. Boy PROJECT ENGINEER	APPROVED:	DATE
S.D. Walker G-ECV-3B	James D. Garrison	7 Apr 88
REVIEWED BY:	CHIEF, OCEAN ENGINEERING BRANCH	

UNLESS OTHERWISE SPECIFIED: ALL DIMENSIONS ARE IN INCHES. TOLERANCES: DIM. ±1/8 ANG. ±1°	DRAWING NUMBER 121112	REV. G
SCALE: AS NOTED	SHEET 2 OF 2	