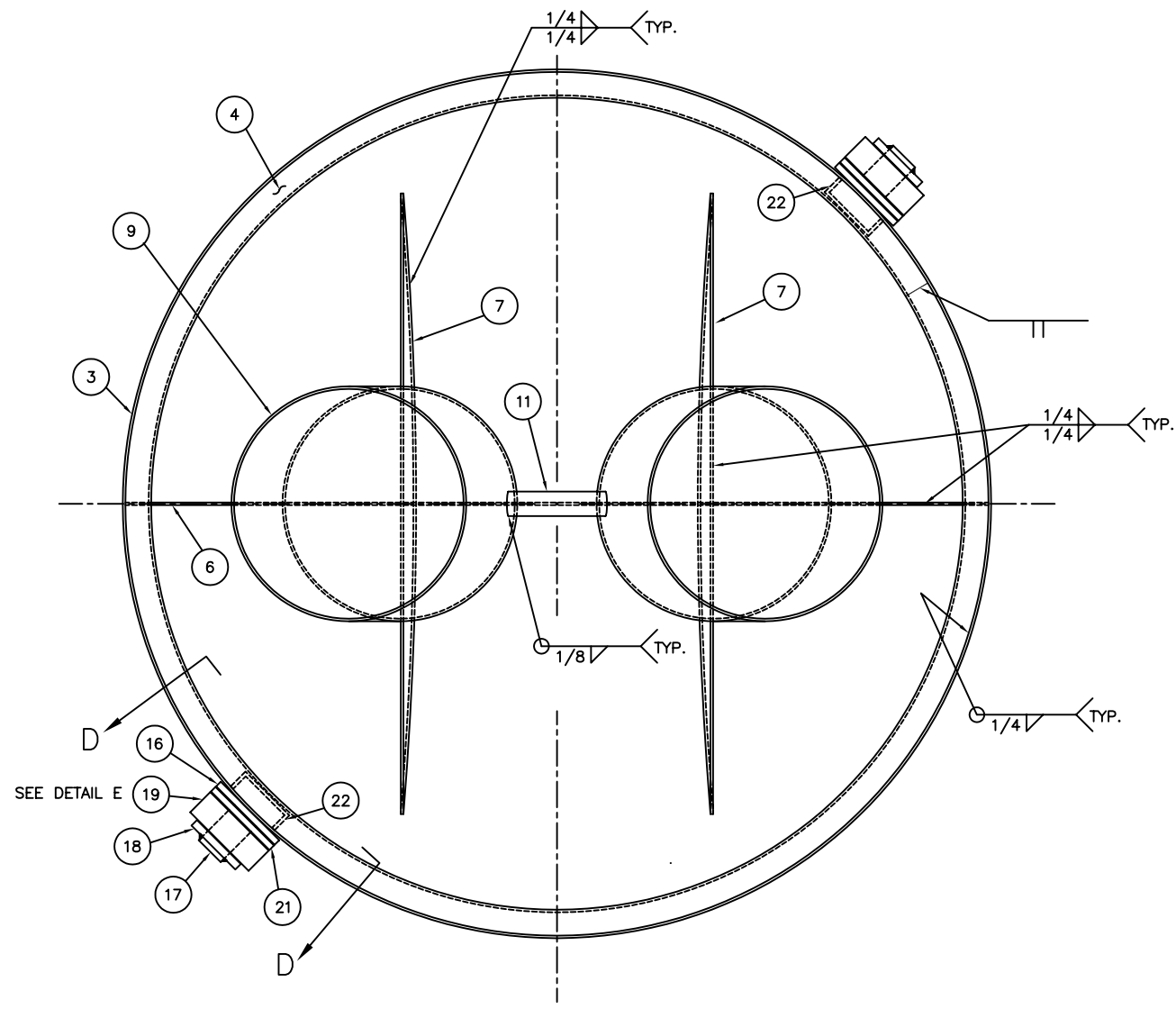
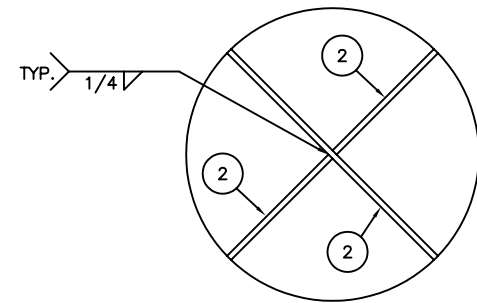


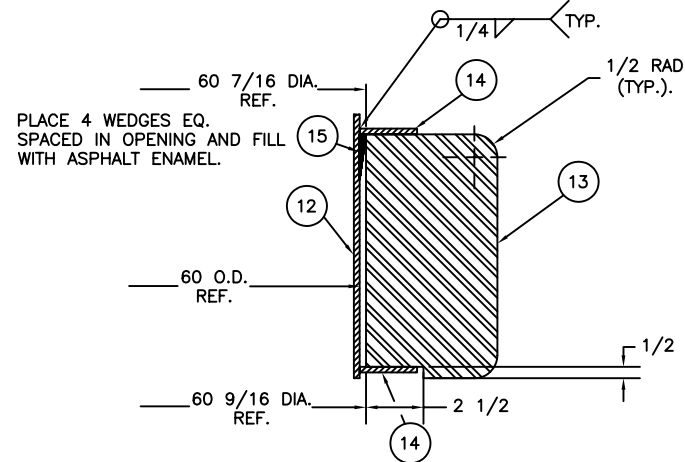
SECTION A-A
SCALE: 1 1/2"=1'-0"



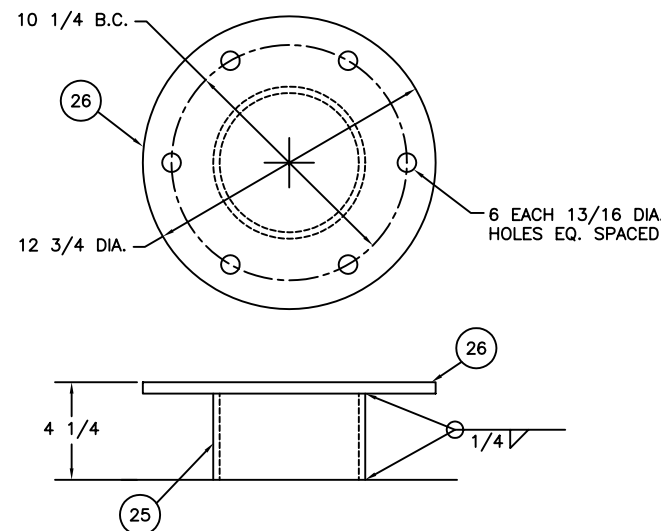
SECTION B-B
SCALE: 1 1/2"=1'-0"



DETAIL C
SCALE: NONE

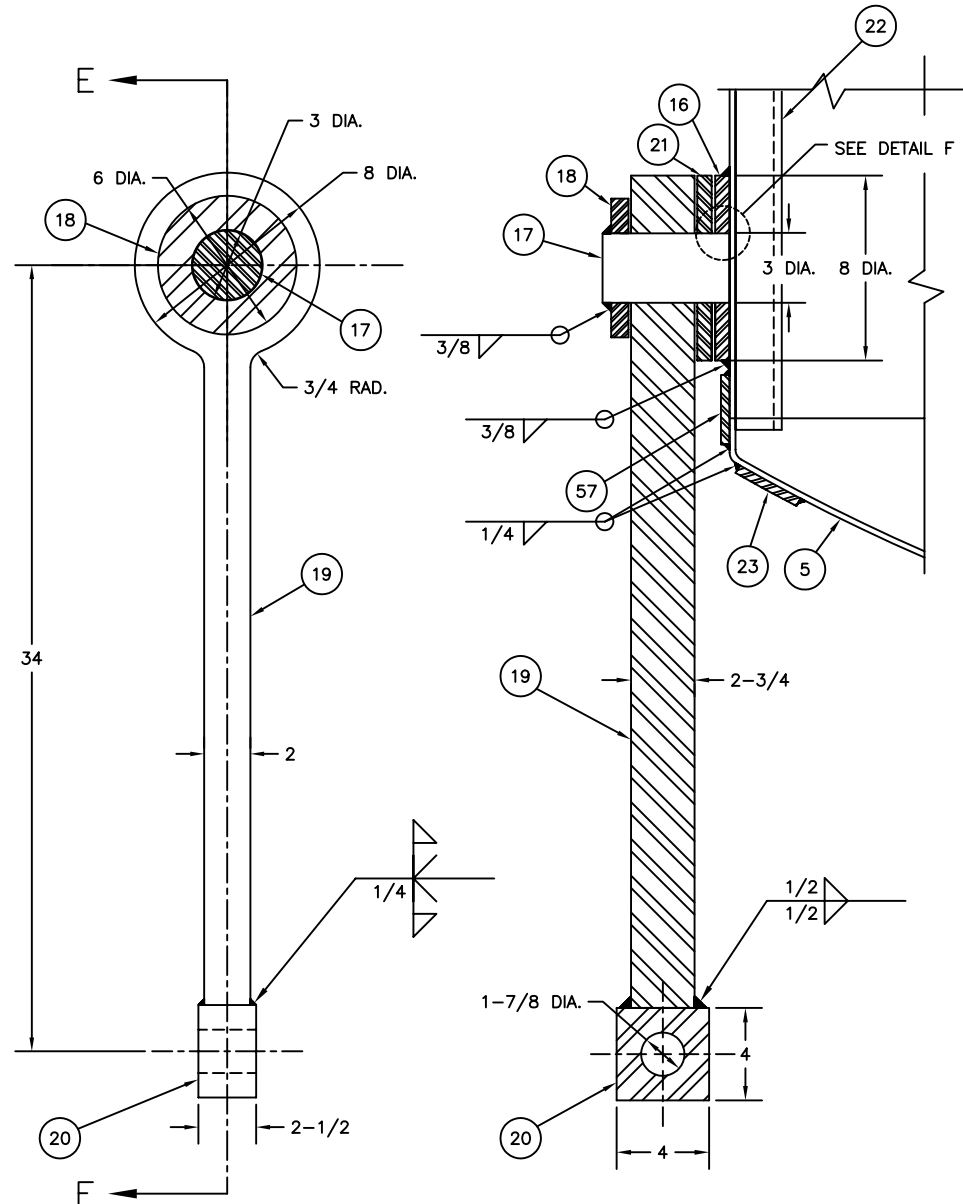
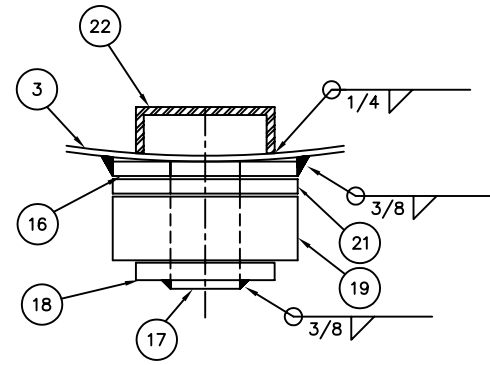


SECTION C-C
SCALE: 3"=1'-0"

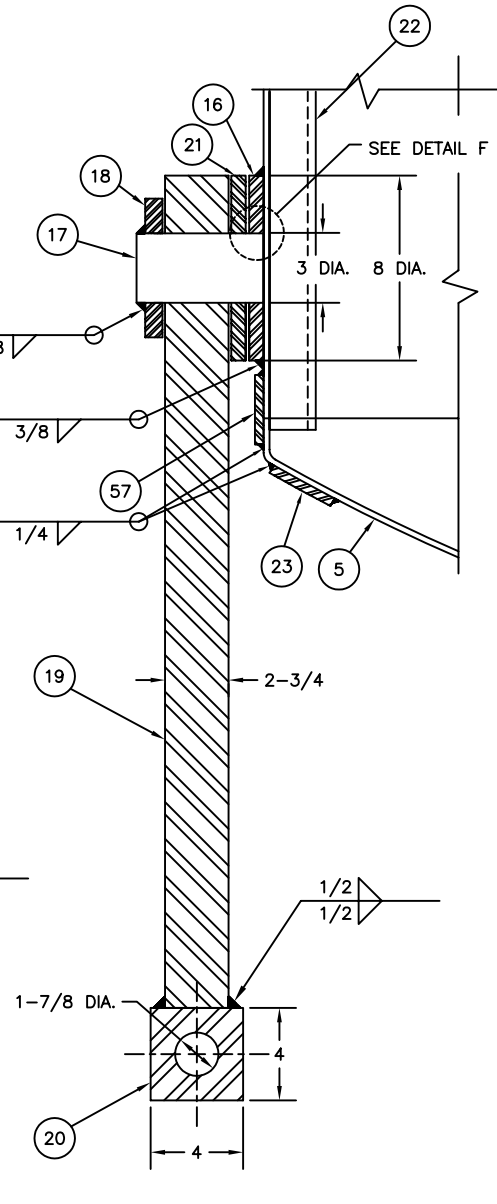


DETAIL C
SCALE: 3"=1'-0"

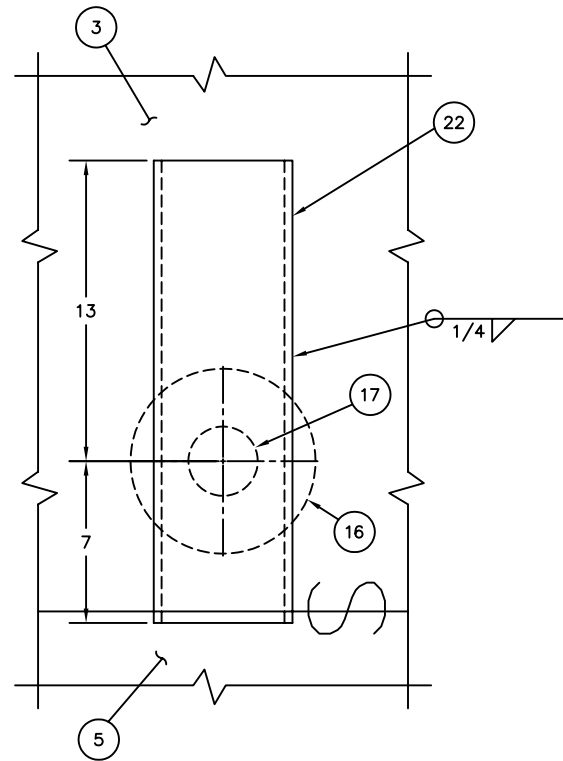
REV.	DATE	APPR.	DESCRIPTION	BY
G	6-4-99	S.W.	ADDED ADDITIONAL AIR TEST FITTING (ITEMS 27 & 28).	S.M.
F	10-1-97	S.W.	REORG DWG. DEL TOWER DETAILS, REF DWG 121176 FOR TWR. DEL 2 EA ITEM 30, 31, & 32. SHORTEN ITEM 29.	S.M.
E	12-15-94	SW	ADDED ITEM 65 & QTY REQ FOR ITEM 57. MOD. ITEM 36.	S.M.
D	10-26-94	SW	DEL ITEM 49. MOD ITEM 58. ADDED QTY FOR ITEM 50.	S.M.
C	1-4-93	CAK	REPLACED 7x17 TOWER WITH THE 6x20 TOWER. LOWERED BELL STAND. REORGANIZED DRAWING.	S.M.
B	6-6-91	SW	DELETED DETAILS 19-B, 20-A, 20-C, 20-E, 22-C, 24-B, AND 24-E.	S.M.
A	11-2-90	CAK	ROTATED BELL STAND 30°.	S.M.
DESIGNED:		U.S. COAST GUARD		HEADQUARTERS
DRAWN:		CIVIL		ENGINEERING
TRACED:		1988 TYPE		7x17 LR BUOY
CHECKED:		R. J. Wells		10/5/89
REVIEWED BY:		CHIEF, OCEAN ENGINEERING BRANCH		
UNLESS OTHERWISE SPECIFIED:		DRAWING NUMBER		REV.
ALL DIMENSIONS ARE IN INCHES.		121129		G
TOLERANCES: DIM. ±1/8		SCALE: AS NOTED		SHEET 2 OF 4
ANG. ±30°				



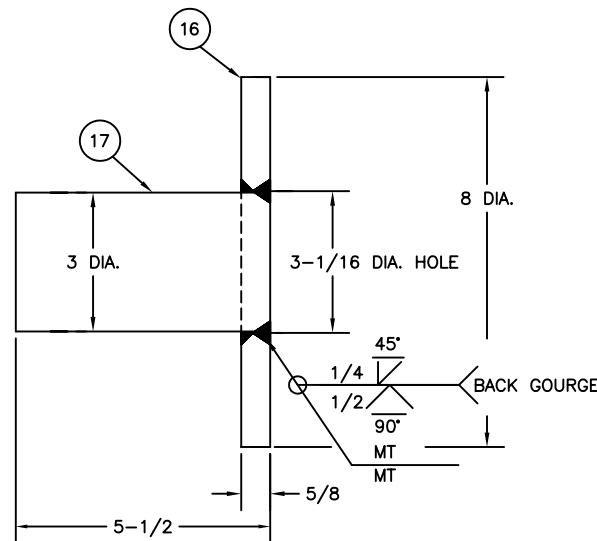
DETAIL E
SCALE: 3"=1'-0"



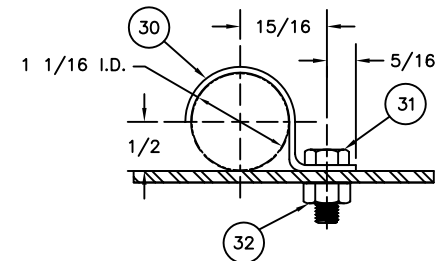
SECTION E-E
SCALE: 3"=1'-0"



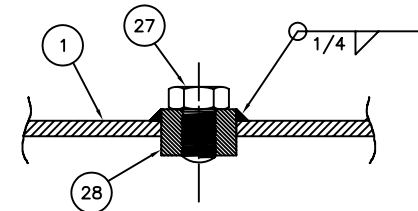
SECTION D-D
SCALE: 3"=1'-0"



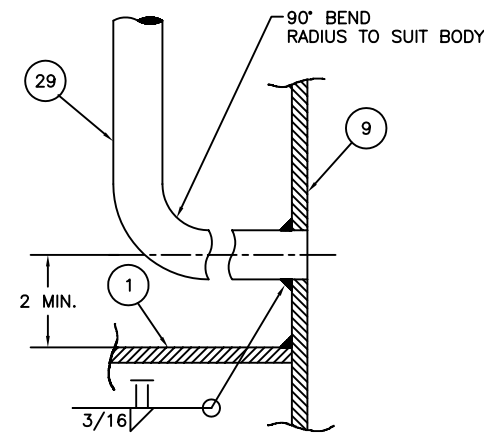
DETAIL F
SCALE: HALF



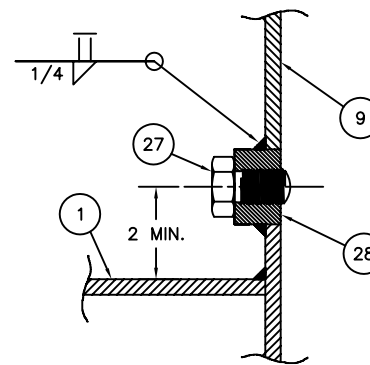
DETAIL G
SCALE: FULL



DETAIL H
SCALE: HALF



DETAIL J
SCALE: HALF



DETAIL K
SCALE: HALF

REV.	DATE	APPR.	DESCRIPTION	BY
G	6-4-99	S.W.	ADDED ADDITIONAL AIR TEST FITTING (ITEMS 27 & 28).	S.M.
F	10-1-97	S.W.	REORG DWG. DEL TOWER DETAILS. REF DWG 121176 FOR TWR. DEL 2 EA ITEM 30, 31, & 32. SHORTEN ITEM 29.	S.M.
E	12-15-94	SW	ADDED ITEM 65 & QTY REQ FOR ITEM 57. MOD. ITEM 36.	S.M.
D	10-26-94	SW	DEL ITEM 49. MOD ITEM 58. ADDED QTY FOR ITEM 50.	S.M.
C	1-4-93	CAK	REPLACED 7x17 TOWER WITH THE 6x20 TOWER. LOWERED BELL STAND. REORGANIZED DRAWING.	S.M.
B	6-6-91	SW	DELETED DETAILS 19-B, 20-A, 20-C, 20-E, 22-C, 24-B, AND 24-E.	S.M.
A	11-2-90	CAK	ROTATED BELL STAND 30°.	S.M.

DESIGNED: U.S. COAST GUARD HEADQUARTERS
 DRAWN: R.V.F.
 TRACED: S.M.
 CHECKED: W.E.K.
 REVIEWED BY:
 C. A. Kohler
 PROJECT ENGINEER
 REVIEWED BY:
 S. D. Walker
 G-EGV-3B
 APPROVED: R. J. Wells
 CHIEF, OCEAN ENGINEERING BRANCH
 DATE: 10/5/89

UNLESS OTHERWISE SPECIFIED: ALL DIMENSIONS ARE IN INCHES. TOLERANCES: DIM. ±1/8 ANG. ±30°	DRAWING NUMBER	REV.
	121129	G
	SCALE: AS NOTED	SHEET 3 OF 4

BILL OF MATERIALS

ITEM NO.	NO. REQ.	DESCRIPTION	MATL.	REMARKS
1	1	TOP HEAD	STEEL	84 DIA. x 1/4 THK.
2	4	TOP HEAD STIFFNERS	STEEL	2-1/2 x 1/4 THK.
3	1	WRAPPER	STEEL	84 DIA. x 1/4 THK.
4	1	WRAPPER STIFFNER	STEEL	2-1/2 x 2-1/2 x 1/4 L
5	1	BOTTOM HEAD	STEEL	84 DIA. x 1/4 THK.
6	1	BOTTOM HEAD STIFFNER	STEEL	11-9/16 x 1/4 THK.
7	2	POCKET BRACE	STEEL	10-1/2 x 1/4 THK.
8	2	POCKET COVER ASSEMBLY	STEEL	SEE DRAWING 121104
9	2	POCKET WRAPPER	STEEL	22 I.D. x 1/4 THK.
10	2	POCKET BOTTOM PLATE	STEEL	22 DIA. x 1/4 THK.
11	1	POCKET VENT PIPE	GAL. STEEL	2 SCH 40
12	1	COUNTERWEIGHT TUBE	STEEL	60 DIA. x 1/4 THK.
13	1	COUNTERWEIGHT	CAST IRON	SEE NOTE 2
14	2	COUNTERWEIGHT SUPPORT RING	STEEL	2-1/2 x 1/4 THK.
15	4	WEDGE	STEEL	2 x 2 x 7/32 THK.
16	2	MOORING ARM SUPPORT PLATE	STEEL	8 O.D. x 3-1/16 I.D. x 5/8 THK.
17	2	MOORING ARM PIN	STEEL	3 DIA. x 5-1/2 LG.
18	2	MOORING ARM PIN WASHER	STEEL	6 O.D. x 3-1/16 I.D. x 3/4 THK.
19	2	MOORING ARM	STEEL	2-3/4 THK.
20	2	MOORING ARM END	STEEL	4 x 4 x 2-1/2 THK.
21	2	MOORING ARM SPACER	STEEL	8 O.D. x 3-1/16 I.D. x 5/8 THK.
22	2	MOORING PIN STIFFNER	STEEL	C 6.5 x 10.5 x 20 LG.
23	4	CHAFING STRIP	STEEL	24 x 3 x 3/8 THK.
24	3	TOP HEAD LIFT EYE	STEEL	SEE DRAWING 121140
25	1	BELL STAND	STEEL	6 SCH 80
26	1	BELL STAND PLATE	STEEL	12-3/4 DIA. x 1/2 THK.
27	4	PIPE PLUG	STAIN. STEEL	3/4 NPT
28	4	HALF COUPLING	STAIN. STEEL	3/4 NPT
29	2	VENT LINE	STAIN. STEEL	3/4 SCH 40
30	2	VENT PIPE CLIP	STAIN. STEEL	5/8 x 1/16 THK.
31	2	HEX HEAD CAP SCREW	STAIN. STEEL	1/4-20UNC x 5/8 LG.
32	2	HEAVY HEX NUT	STAIN. STEEL	1/4-20UNC

NOTES:

- SEE LATEST REVISION OF U.S.C.G. CIVIL ENGINEERING SPECIFICATION No. 464 FOR FABRICATION REQUIREMENTS
- THE TOTAL WEIGHT OF ITEM 13 SHALL BE 3,100 LBS. (+5% OR - 1%).
- TYPE 304 STAINLESS STEEL MAY BE SUBSTITUED FOR ITEM 11.

G	6-4-99	S.W.	ADDED ADDITIONAL AIR TEST FITTING (ITEMS 27 & 28).	S.M.
F	10-1-97	S.W.	REORG DWG. DEL TOWER DETAILS. REF DWG 121176 FOR TWR. DEL 2 EA ITEM 30, 31, & 32. SHORTEN ITEM 29.	S.M.
E	12-15-94	SW	ADDED ITEM 65 & QTY REQ FOR ITEM 57. MOD. ITEM 36.	S.M.
D	10-26-94	SW	DEL ITEM 49. MOD ITEM 58. ADDED QTY FOR ITEM 50.	S.M.
C	1-4-93	CAK	REPLACED 7x17 TOWER WITH THE 6x20 TOWER. LOWERED BELL STAND. REORGANIZED DRAWING.	S.M.
B	6-6-91	SW	DELETED DETAILS 19-B, 20-A, 20-C, 20-E, 22-C, 24-B, AND 24-E.	S.M.
A	11-2-90	CAK	ROTATED BELL STAND 30°.	S.M.
REV.	DATE	APPR.	DESCRIPTION	BY
DESIGNED:	U.S. COAST GUARD HEADQUARTERS			
DRAWN: R.V.F.	CIVIL ENGINEERING			
TRACED: S.M.	1988 TYPE			
CHECKED: W.E.K.	7x17 LR BUOY			
REVIEWED BY:	C. A. Kohler PROJECT ENGINEER			
REVIEWED BY:	S. D. Walker G-ECV-3B			
REVIEWED BY:	APPROVED:	R. J. Wells		DATE 10/5/89
UNLESS OTHERWISE SPECIFIED: ALL DIMENSIONS ARE IN INCHES. TOLERANCES: DIM. ±1/8 ANG. ±30°			DRAWING NUMBER 121129	REV. G
SCALE: AS NOTED			SHEET 4	OF 4