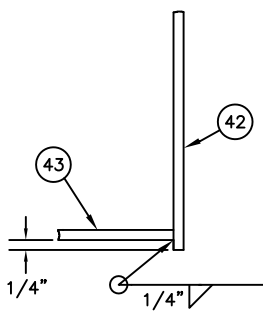
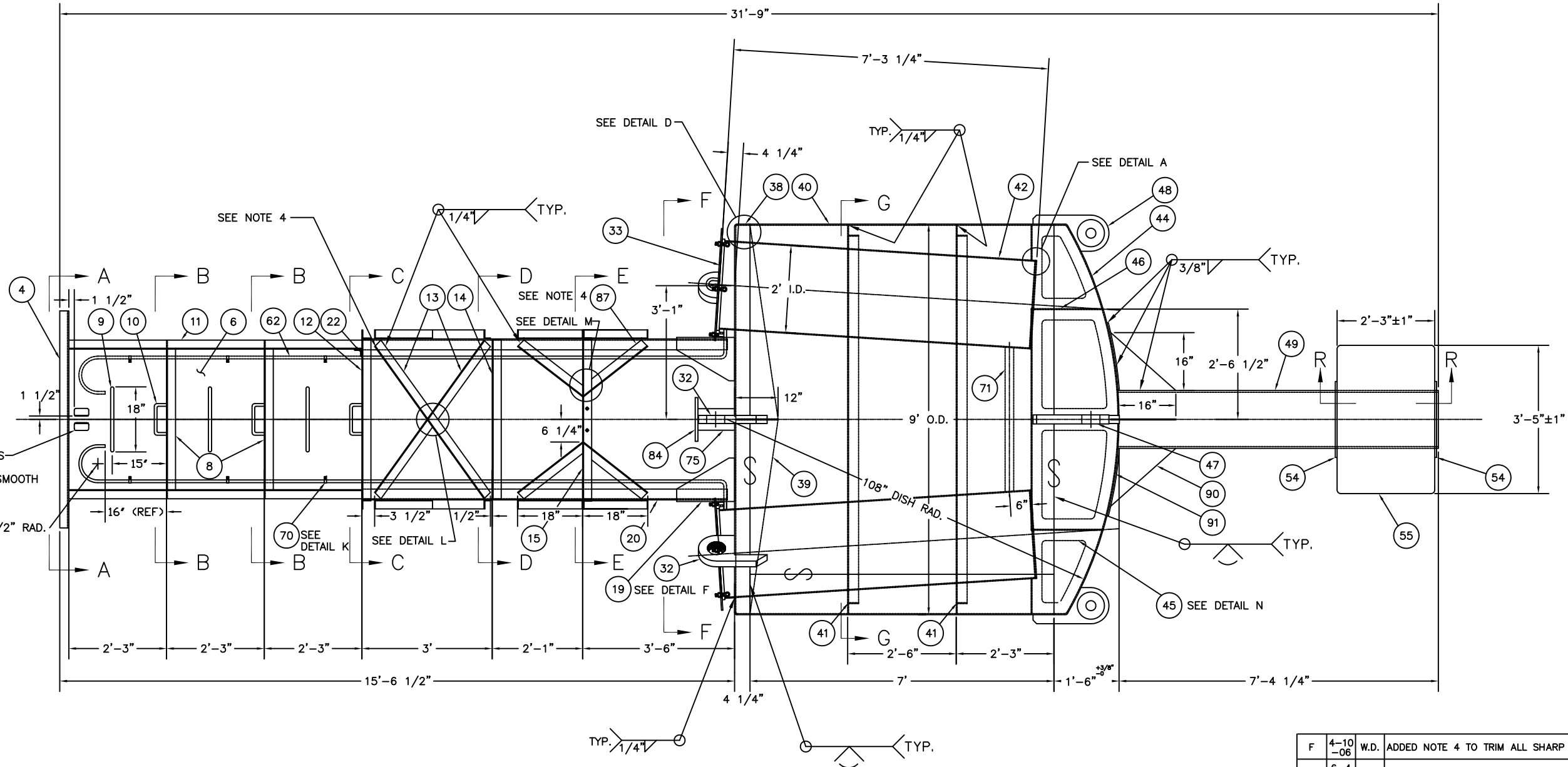
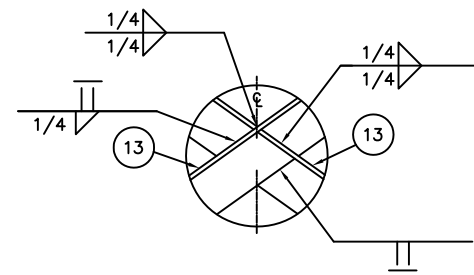


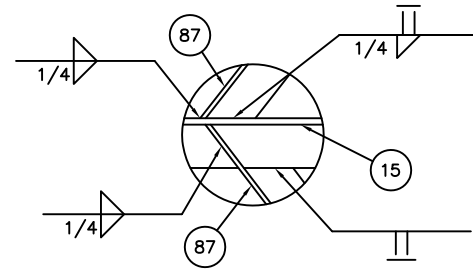
PROVIDE HAND HOLES  
(4) @ 4"x3" RAD.  
CORNERS & GRIND SMOOTH



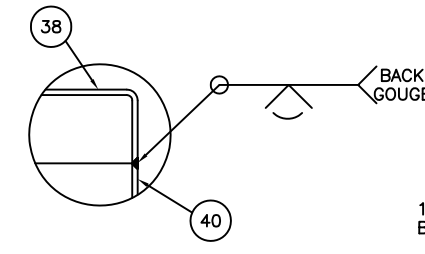
DETAIL A  
SCALE: NONE



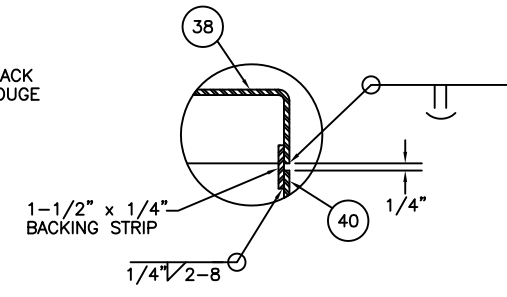
DETAIL L  
SCALE: NONE



DETAIL M  
SCALE: NONE

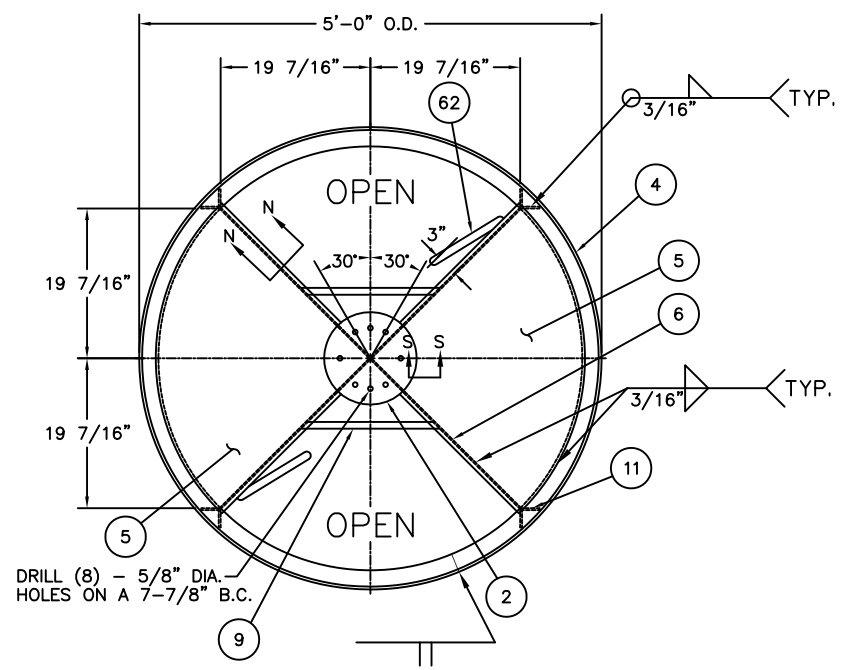


DETAIL D  
SCALE: NONE

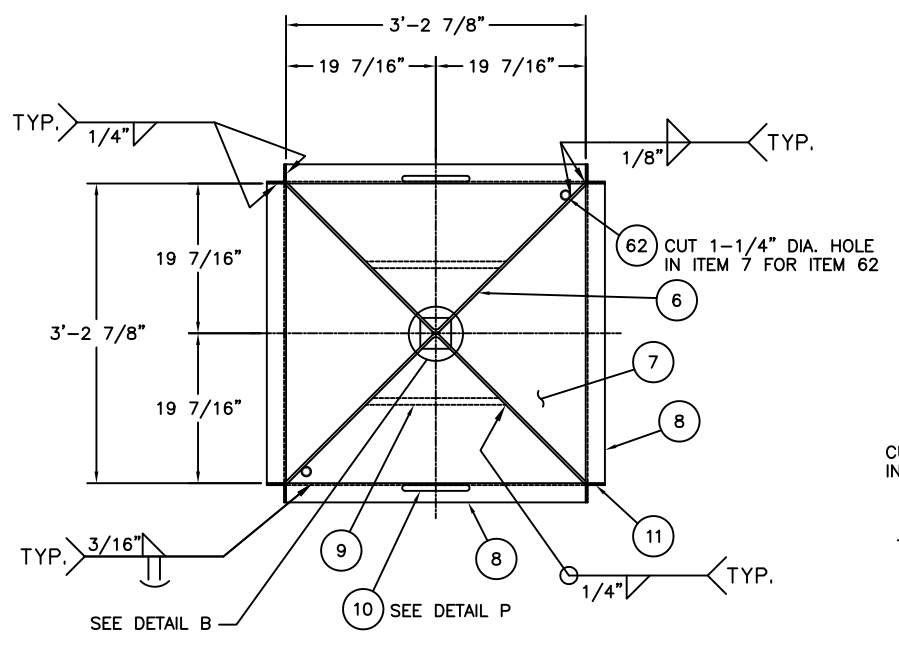


DETAIL D  
SCALE: NONE  
OPTIONAL

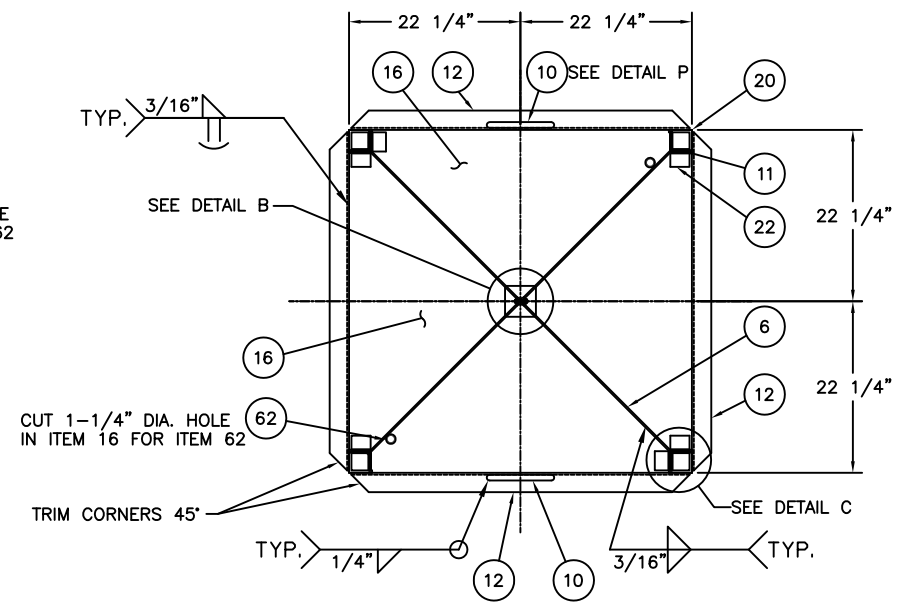
F	4-10-06	W.D.	ADDED NOTE 4 TO TRIM ALL SHARP CORNERS ON TOWER 45'.	S.M.
E	6-4-99	S.W.	ADDED ADDITIONAL AIR TEST FITTING (ITEMS 64 & 66).	S.M.
D	11-14-94	SW	MODIFIED ITEMS 42, 45, & 46. MOD WELDS IN SECTION S-S & DETAIL E. DEL ITEM 66. ADDED QTY TO ITEM 3.	S.M.
C	1-25-93	CK	REORGANIZED DWG. MOD ITEM 17, MOORING EYE DIA. AND NOTES. SPECIFIED QTY REQ. FOR ITEMS 30, 31, & 70.	S.M.
C	1-25-93	CK	DELETED ITEMS 34, 36, 50, 52, 56, 65, 74, 76, 77, 78, 88, 94, 96, AND 97.	S.M.
B	6-6-91	SW	ADDED NOTE FOR ITEM 32.	S.M.
A	11-8-90	SW	MOD. ITEMS 11, 33, 34, 36, & 71. ADDED ITEMS 22 & 91. ROT. ITEM 84. DEL SHT 4 OF 6. MOD BILL OF MAT & NOTE 3.	S.M.
REV.	DATE	APPR.	DESCRIPTION	BY
			DESIGNED: U.S. COAST GUARD	HEADQUARTERS
			DRAWN: R.V.F.	
			TRACED: A.C.G.	
			CHECKED: W.E.K.	
			REVIEWED BY: C. A. Kohler	
			PROJECT ENGINEER	
			REVIEWED BY: S. D. Walker	
			C-ECV-3B	
			APPROVED: R. J. Wells	DATE: 10/16/89
			CHIEF OF OCEAN ENGINEERING BRANCH	
			UNLESS OTHERWISE SPECIFIED: ALL DIMENSIONS ARE IN INCHES. TOLERANCES: DIM. ±1/8 ANG. ±1°	DRAWING NUMBER: 121132
			SCALE: AS NOTED	SHEET 1 OF 5



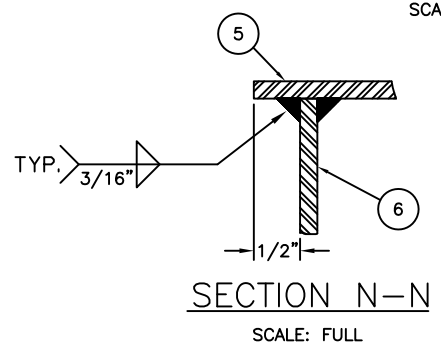
SECTION A-A  
SCALE: 1"=1'-0"



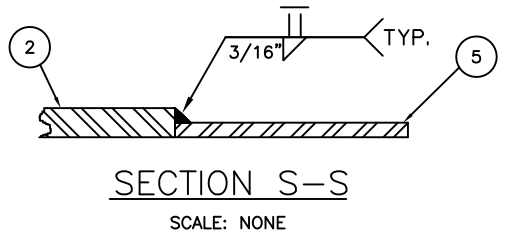
SECTION B-B  
SCALE: 1"=1'-0"



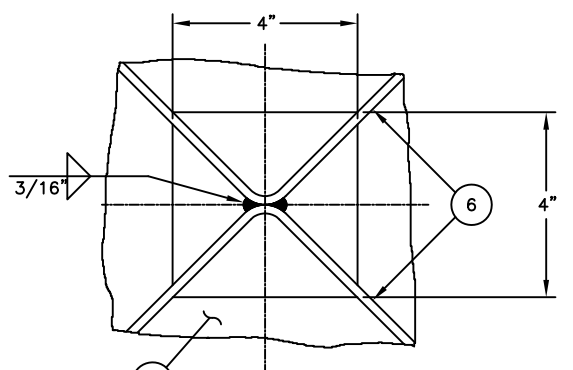
SECTION C-C  
SCALE: 1"=1'-0"



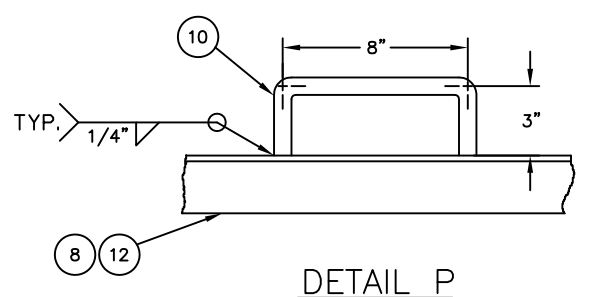
SECTION N-N  
SCALE: FULL



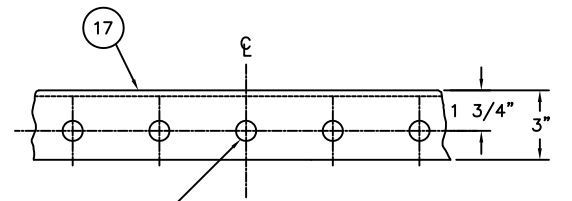
SECTION S-S  
SCALE: NONE



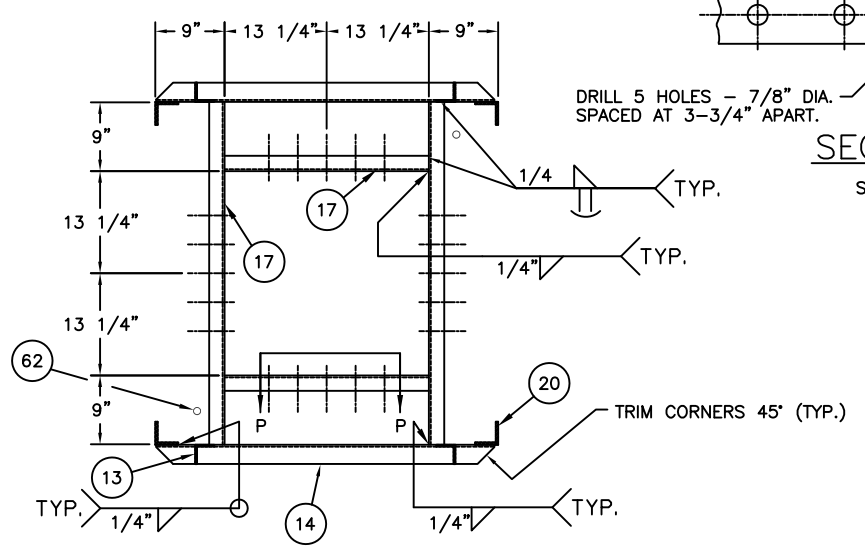
DETAIL B  
SCALE: HALF



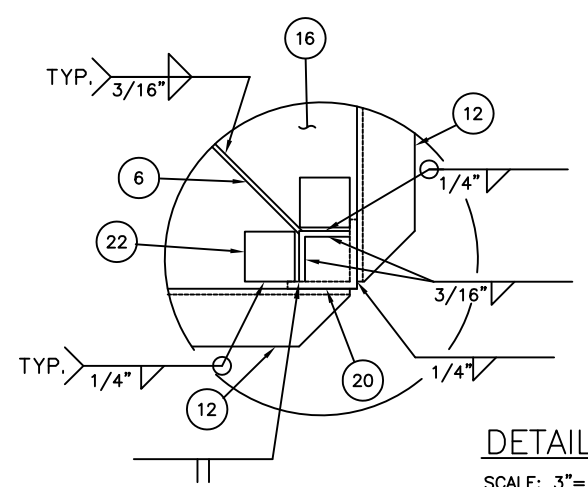
DETAIL P  
SCALE: 3"=1'-0"



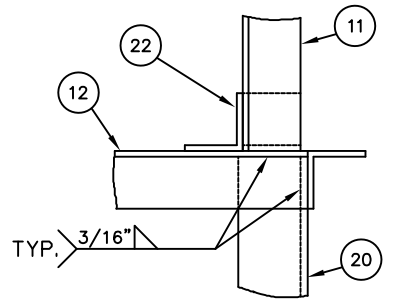
SECTION P-P  
SCALE: 3"=1'-0"



SECTION D-D  
SCALE: 1"=1'-0"



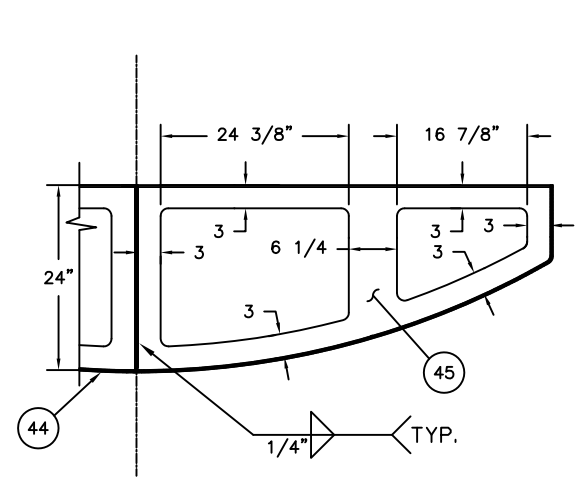
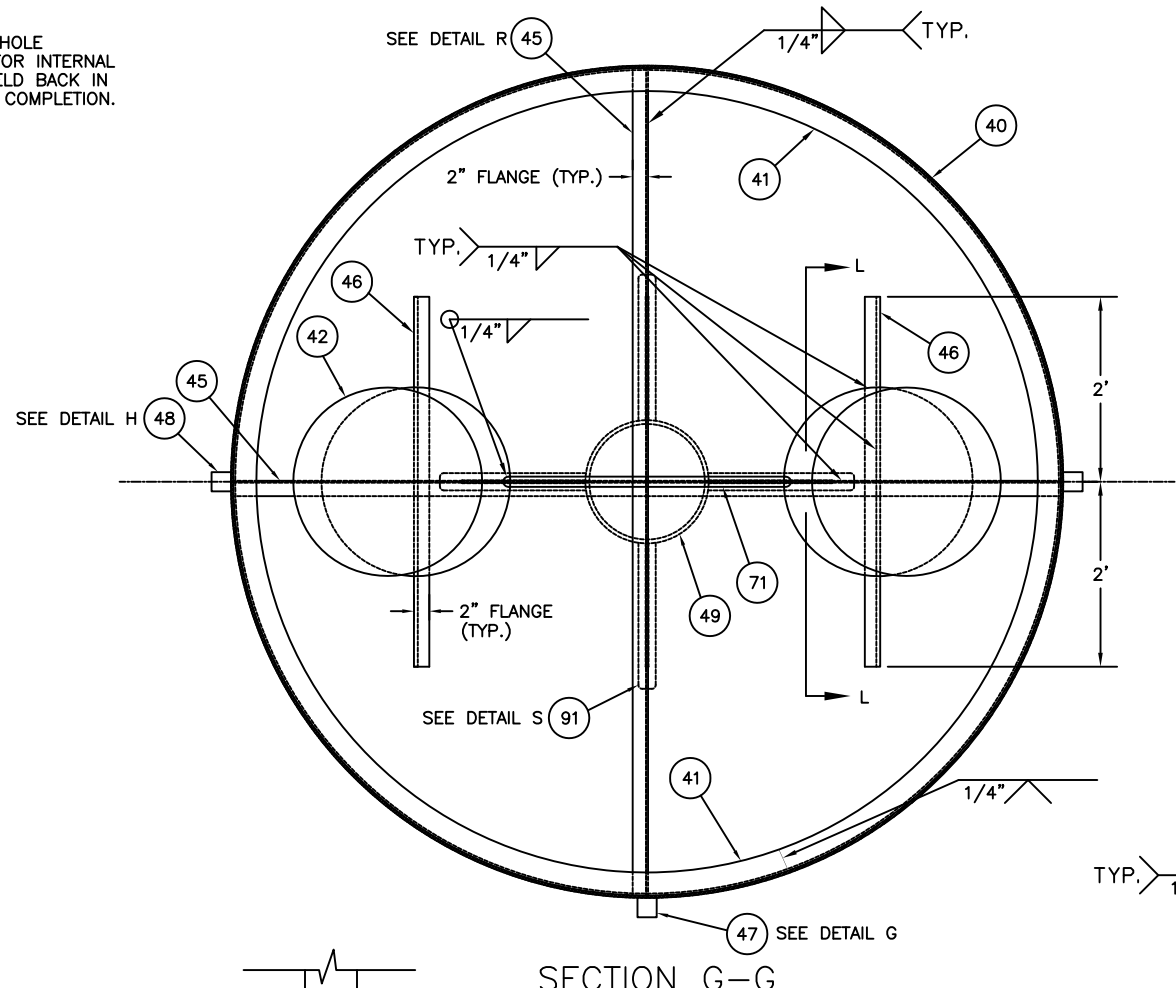
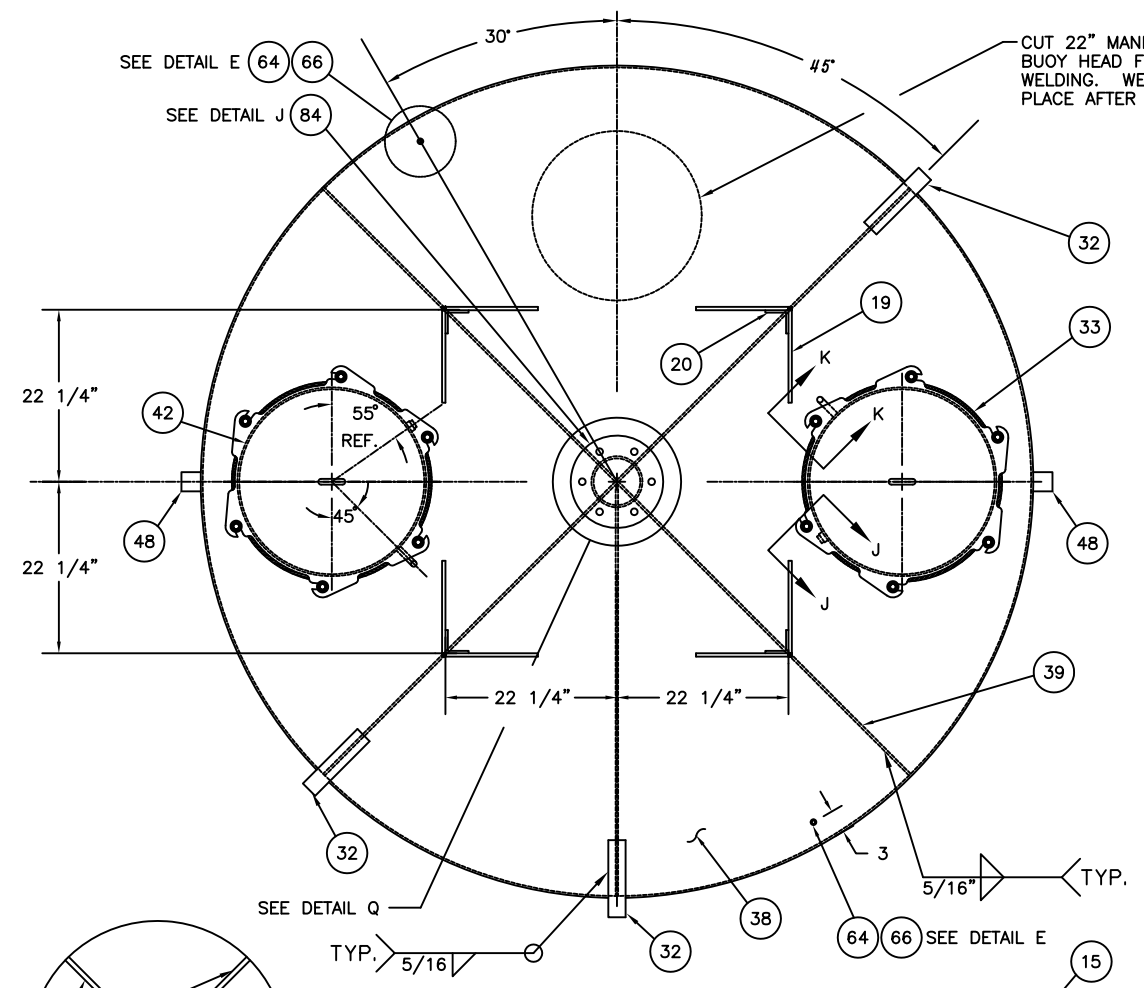
DETAIL C  
SCALE: 3"=1'-0"



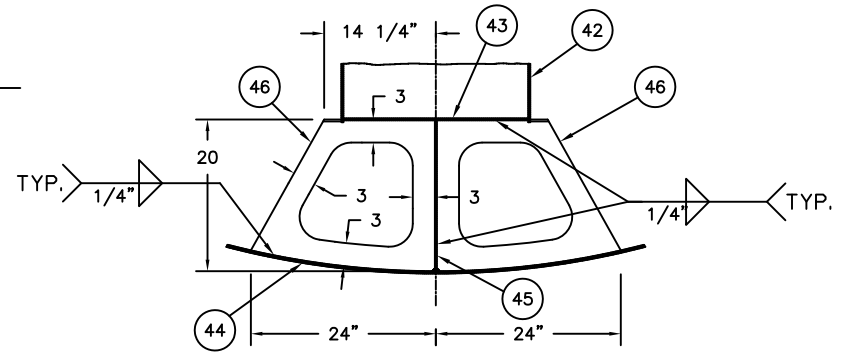
REV.	DATE	APPR.	DESCRIPTION	BY
F	4-10-06	W.D.	ADDED NOTE 4 TO TRIM ALL SHARP CORNERS ON TOWER 45°.	S.M.
E	6-4-99	S.W.	ADDED ADDITIONAL AIR TEST FITTING (ITEMS 64 & 66).	S.M.
D	11-14-94	SW	MODIFIED ITEMS 42, 45, & 46. MOD WELDS IN SECTION S-S & DETAIL E. DEL ITEM 66. ADDED QTY TO ITEM 29.	S.M.
C	1-25-93	CAK	REORGANIZED DWG. MOD ITEM 17, MOORING EYE DIA. & NOTES. SPECIFIED QTY REQ FOR ITEMS 30, 31, & 70.	S.M.
C	1-25-93	CAK	DELETED ITEMS 34, 36, 50, 52, 56, 65, 74, 76, 77, 78, 88, 94, 96, AND 97.	S.M.
B	6-6-91	SW	MODIFIED BILL OF MATERIALS.	S.M.
A	11-9-90	SW	MODIFIED BILL OF MATERIALS AND NOTE 3.	S.M.

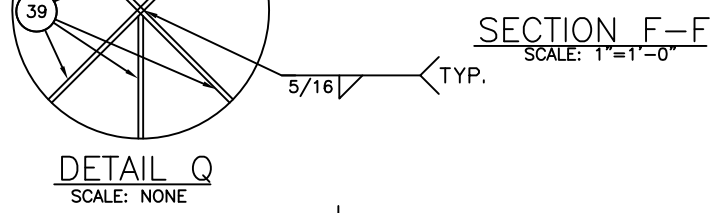
DESIGNED:	U.S. COAST GUARD		HEADQUARTERS
DRAWN:	R.V.F.		
TRACED:	S.M.		
CHECKED:	W.E.K.		
REVIEWED BY:	C. A. Kohler		
	PROJECT ENGINEER		
	REVIEWED BY:		
	S. D. Walker		
	G-ECV-3B		
REVIEWED BY:	APPROVED:	DATE	
	R. J. Wells		10/16/89
		CHIEF, OCEAN ENGINEERING BRANCH	
UNLESS OTHERWISE SPECIFIED: ALL DIMENSIONS ARE IN INCHES. TOLERANCES: DIM. ±1/8 ANG. ±1°		DRAWING NUMBER	REV.
		121132	F
SCALE: AS NOTED		SHEET 2 OF 5	



DETAIL R  
SCALE: 1"=1'-0"



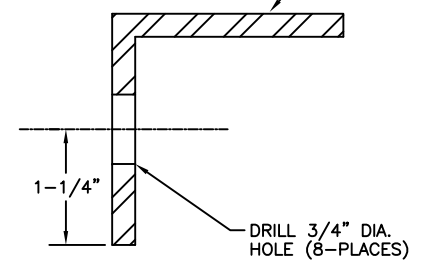
SECTION L-L  
SCALE: 1"=1'-0"



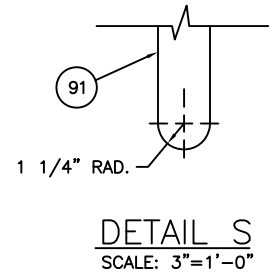
SECTION F-F  
SCALE: 1"=1'-0"



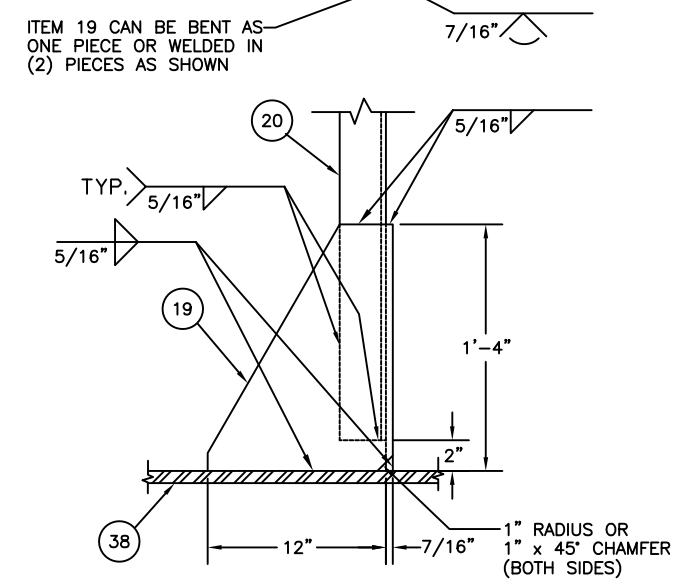
DETAIL Q  
SCALE: NONE



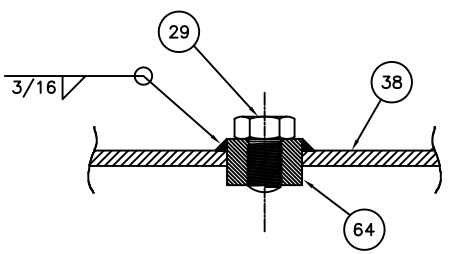
SECTION M-M  
SCALE: FULL



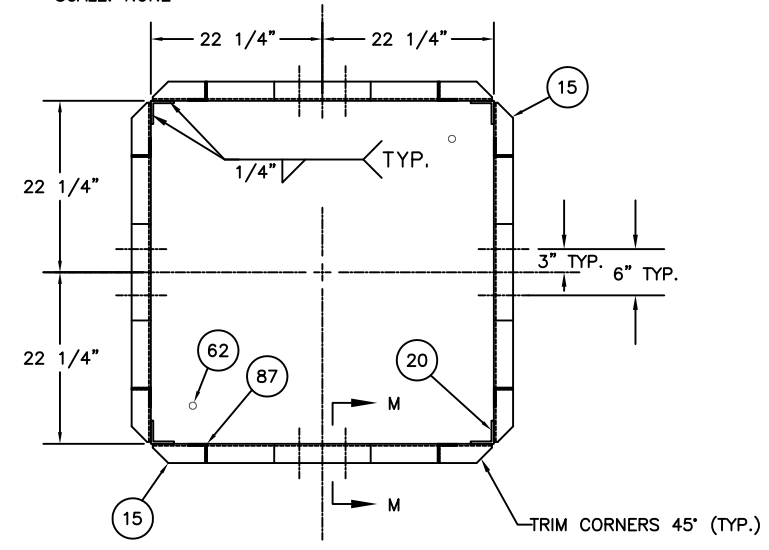
DETAIL S  
SCALE: 3"=1'-0"



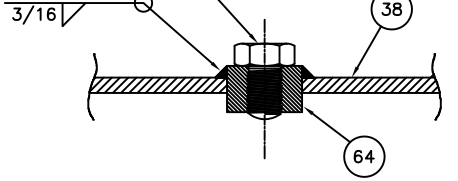
DETAIL F  
SCALE: NONE



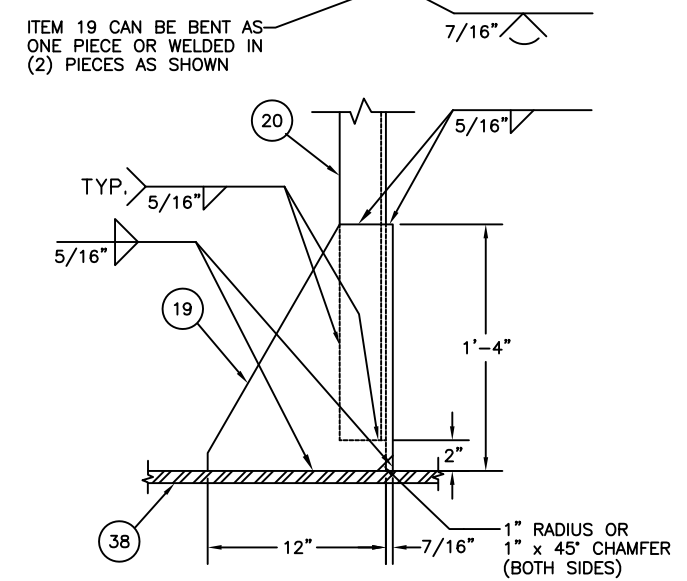
DETAIL E  
SCALE: NONE



SECTION E-E  
SCALE: 1"=1'-0"

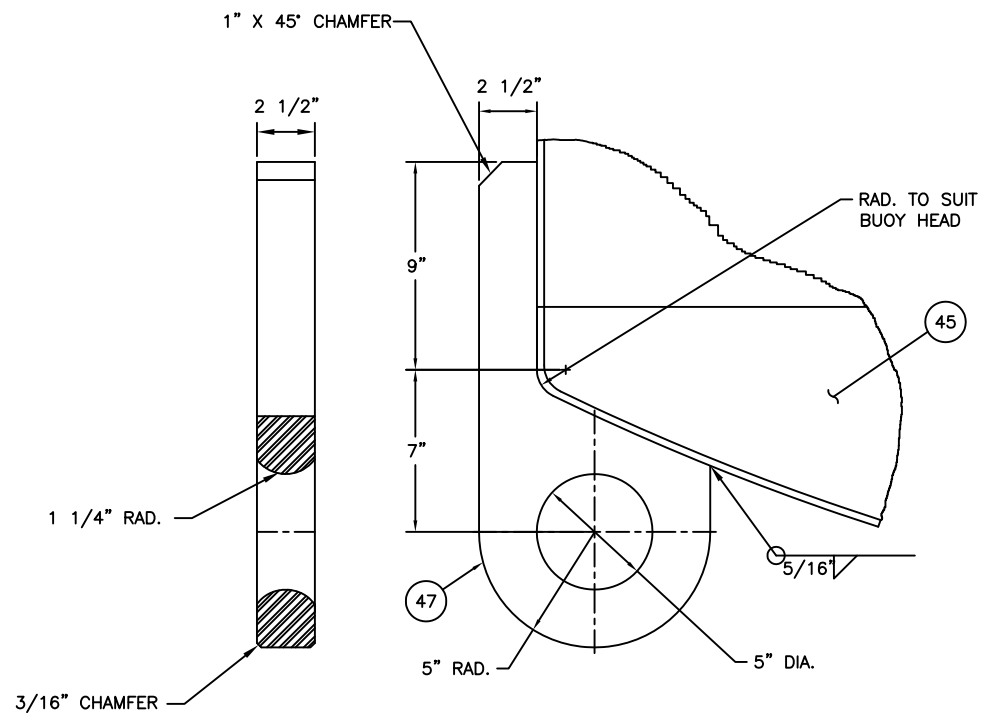


DETAIL E  
SCALE: NONE

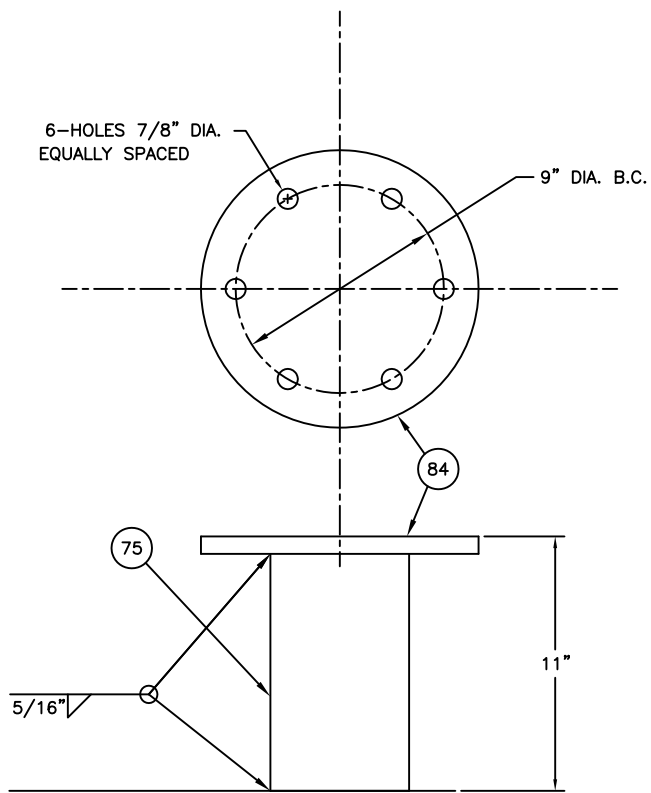


DETAIL F  
SCALE: NONE

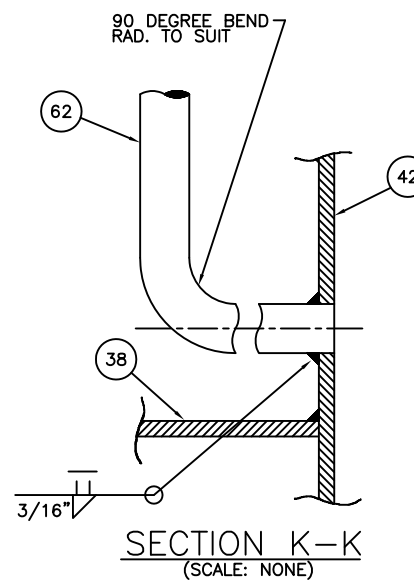
F	4-10-06	W.D.	ADDED NOTE 4 TO TRIM ALL SHARP CORNERS ON TOWER 45°.	S.M.
E	6-4-99	S.W.	ADDED ADDITIONAL AIR TEST FITTING (ITEMS 64 & 66).	S.M.
D	11-14-94	SW	MODIFIED ITEMS 42, 45, & 46. MOD WELDS IN SECTION S-S & DETAIL E. DEL ITEM 66. ADDED QTY TO ITEM 3.	S.M.
C	1-25-93	CAK	REORGANIZED DWG. MOD ITEM 17, MOORING EYE DIA. & NOTES. SPECIFIED QTY REQ FOR ITEMS 30, 31, & 70.	S.M.
C	1-25-93	CAK	DELETED ITEMS 34, 36, 50, 52, 56, 65, 74, 76, 77, 78, 88, 94, 96, AND 97.	S.M.
B	6-6-91	SW	MODIFIED BILL OF MATERIALS.	S.M.
A	11-9-90	SW	MODIFIED BILL OF MATERIALS AND NOTE 3.	S.M.
REV.	DATE	APPR.	DESCRIPTION	BY
DESIGNED:			U.S. COAST GUARD HEADQUARTERS	
DRAWN:			CIVIL ENGINEERING	
TRACED:			1989 TYPE	
CHECKED:			9x32 LR BUOY	
REVIEWED BY:			C. A. Kohler PROJECT ENGINEER	
REVIEWED BY:			S. D. Walker G-ECV-3B	
APPROVED:			R. J. Wells CHIEF, OCEAN ENGINEERING BRANCH	
UNLESS OTHERWISE SPECIFIED: ALL DIMENSIONS ARE IN INCHES. TOLERANCES: DIM. ±1/8 ANG. ±1°			DRAWING NUMBER	REV.
			121132	F
SCALE: AS NOTED			SHEET 3	OF 5



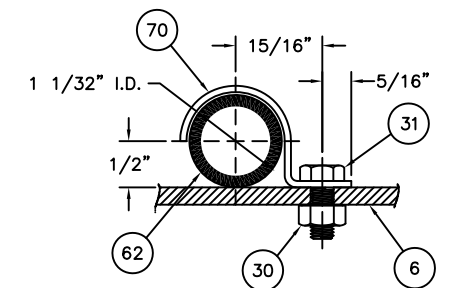
DETAIL G  
(SCALE: 3"=1'-0")



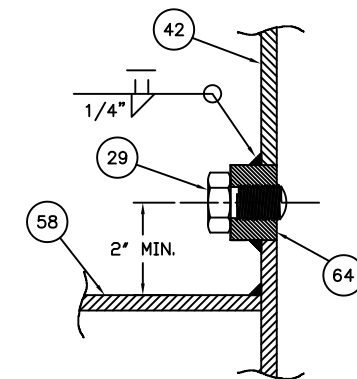
DETAIL J  
(SCALE: 3"=1'-0")



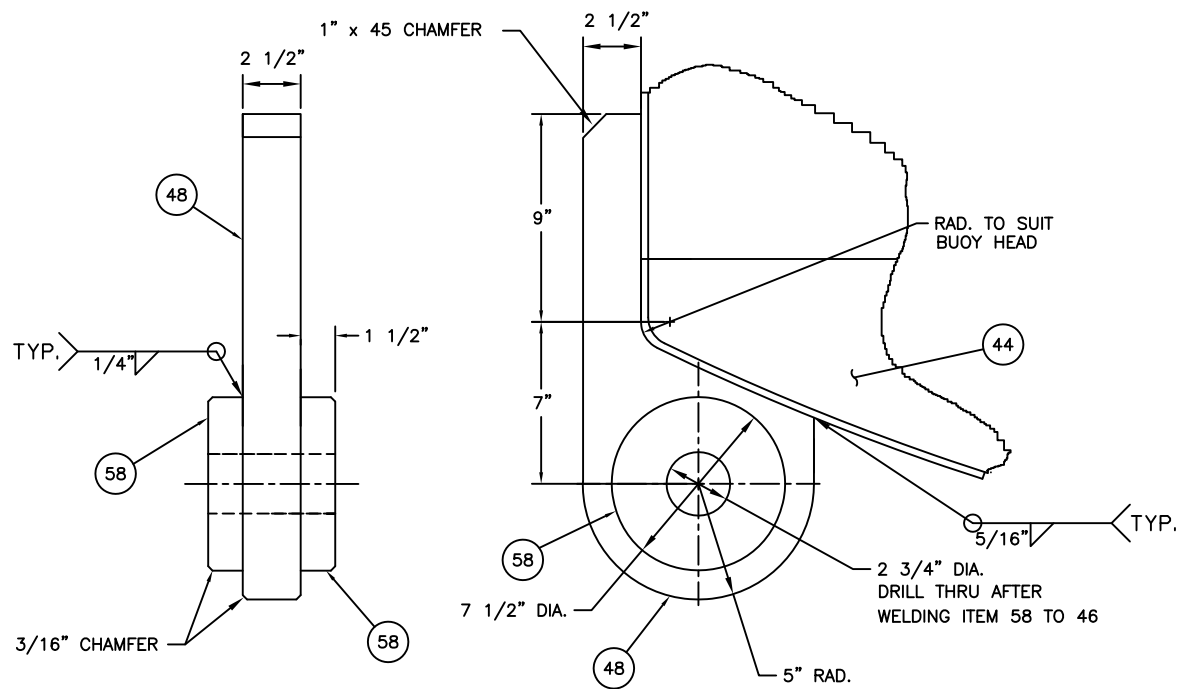
SECTION K-K  
(SCALE: NONE)



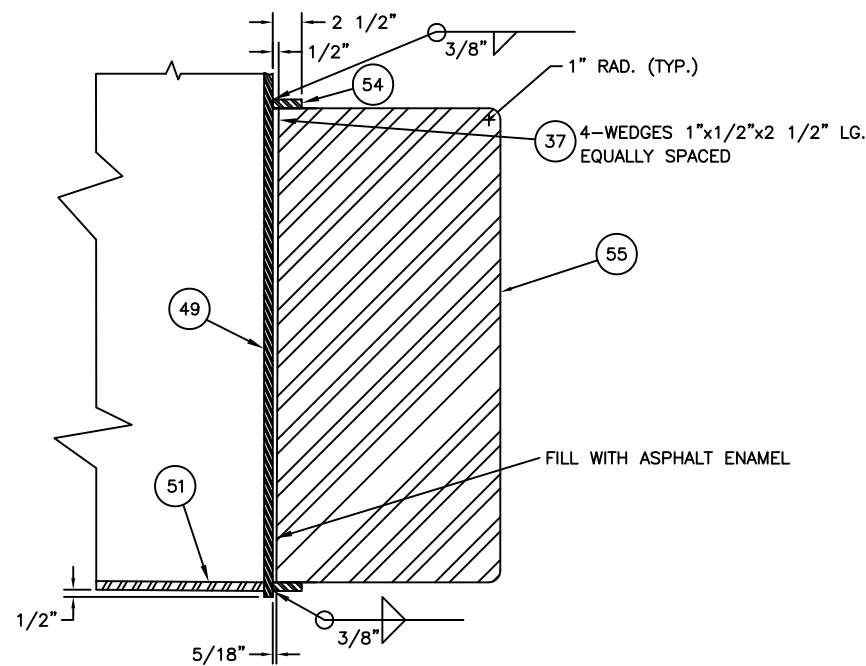
DETAIL K  
(SCALE: NONE)



SECTION J-J  
(SCALE: NONE)



DETAIL H  
(SCALE: 3"=1'-0")



SECTION R-R  
(SCALE: NONE)

F	4-10-06	W.D.	ADDED NOTE 4 TO TRIM ALL SHARP CORNERS ON TOWER 45.	S.M.
E	6-4-99	S.W.	ADDED ADDITIONAL AIR TEST FITTING (ITEMS 64 & 66).	S.M.
D	11-14-94	SW	MODIFIED ITEMS 42, 45, & 46. MOD WELDS IN SECTION S-S & DETAIL E. DEL ITEM 66. ADDED QTY TO ITEM 3.	S.M.
C	1-25-93	CAK	REORGANIZED DWG. MOD ITEM 17, MOORING EYE DIA. & NOTES. SPECIFIED QTY REQ FOR ITEMS 30, 31, & 70.	S.M.
C	1-25-93	CAK	DELETED ITEMS 34, 36, 50, 52, 56, 65, 74, 76, 77, 78, 88, 94, 96, AND 97.	S.M.
B	6-6-91	SW	MODIFIED BILL OF MATERIALS.	S.M.
A	11-9-90	SW	MODIFIED BILL OF MATERIALS AND NOTE 3.	S.M.
REV.	DATE	APPR.	DESCRIPTION	BY
DESIGNED:			U.S. COAST GUARD HEADQUARTERS	
DRAWN: R.V.F.			CIVIL ENGINEERING	
TRACED: S.M.			1989 TYPE	
CHECKED: W.E.K.			9x32 LR BUOY	
REVIEWED BY:				
C. A. Kohler PROJECT ENGINEER				
S. D. Walker G-ECV-3B				
REVIEWED BY:			APPROVED:	DATE
			R. J. Wells	10/16/89
			CHIEF, OCEAN ENGINEERING BRANCH	
UNLESS OTHERWISE SPECIFIED: ALL DIMENSIONS ARE IN INCHES. TOLERANCES: DIM. ±1/8 ANG. ±1°			DRAWING NUMBER	REV.
			121132	F
PLOTING SCALE: 3"=1'-0"			SCALE: AS NOTED	SHEET 4 OF 5

BILL OF MATERIALS

ITEM NO.	NO. REQ.	DESCRIPTION	MATL.	REMARKS
2	1	LANTERN BASE PLATE	STEEL	12" DIA. x 3/8" THK.
4	1	LANTERN RING	STEEL	2 1/2" x 2 1/2" x 3/8" L
5	2	TOP REFLECTOR PLATE	STEEL	3/16" THK.
6	2	VERTICAL REFLECTOR PLATE	STEEL	3/16" THK.
7	8	HORIZONTAL REFLECTOR PLATE	STEEL	3/16" THK.
8	8	REFLECTOR STRUT	STEEL	2 1/2" x 2 1/2" x 1/4" L
9	6	REFLECTOR STEP	STEEL	7/8" DIA. x 18" LG.
10	6	REFLECTOR GRAB BAR	STEEL	3/4" DIA.
11	4	REFLECTOR LEG	STEEL	2 1/2" x 2 1/2" x 1/4" L
12	4	TOWER TOP STRUT	STEEL	2 1/2" x 2 1/2" x 1/4" L
13	12	TOWER DIAGONALS	STEEL	2 1/2" x 2 1/2" x 1/4" L
14	2	TOWER STRUT	STEEL	2 1/2" x 2 1/2" x 1/4" L
15	4	TOWER STRUT	STEEL	2 1/2" x 2 1/2" x 1/4" L
16	1	HORIZONTAL REFLECTOR	STEEL	3/16" THK.
17	4	TAPPER SUPPORTS	STEEL	3" x 2" x 1/4" L
19	4	TOWER FOOT	STEEL	7/16" THK.
20	4	TOWER LEG	STEEL	3" x 3" x 5/16" L
22	6	ANGLE CLIPS	STEEL	2" x 2" x 1/4" L
30	6	HEX HEAD NUT	STAIN. STEEL	1/4"-20UNC
31	6	HEX HEAD CAP SCREW	STAIN. STEEL	1/4"-20UNC-5/8" LG.
32	3	TOP HEAD LIFT EYE	STEEL	SEE DRAWING 121140
33	2	BATTERY POCKET COVER ASSEM.	STEEL	SEE DRAWING 121143
37	4	WEDGES	STEEL	1" x 1/2" x 2 1/2" LG.
38	1	TOP HEAD	STEEL	9'-0" O.D. x 5/16" THK.
39	5	TOP HEAD STIFFENERS	STEEL	12" x 5 3/8" x 5/16" THK.
40	1	BUOY WRAPPER	STEEL	9'-0" O.D. x 5/16" THK.
41	2	WRAPPER STIFFENER	STEEL	3" x 3" x 1/4" L
42	2	BATTERY POCKET WRAPPER	STEEL	24" I.D. x 1/4" THK.
43	2	BATTERY POCKET BOTTOM	STEEL	24" DIA. x 1/4" THK.
44	1	BOTTOM HEAD	STEEL	9'-0" O.D. x 5/16" THK.
45	2	BOTTOM HEAD STIFFENER	STEEL	24" x 1/4" THK.
46	4	POCKET SUPPORTS	STEEL	24" x 20" x 1/4" THK.
47	1	BOTTOM LIFTING EYE	STEEL	2 1/2" THK. PLATE
48	2	MOORING EYE	STEEL	2 1/2" THK. PLATE
49	1	COUNTERWEIGHT TUBE	STEEL	16" O.D. x 1/2" THK.
51	1	CTWT TUBE BOTTOM PLATE	STEEL	15" DIA. x 1/2" THK.

BILL OF MATERIALS

ITEM NO.	NO. REQ.	DESCRIPTION	MATL.	REMARKS
54	2	COUNTERWEIGHT RING	STEEL	16" I.D. x 21" O.D. x 1/2" THK.
55	1	COUNTERWEIGHT	CAST IRON	SEE NOTE 2
58	4	MOORING EYE BOSS	STEEL	7 1/2" DIA. x 1 1/2" THK.
62	2	VENT LINE	STAIN. STEEL	3/4" SCH. 40 PIPE
64	4	THREADED HALF COUPLING	STAIN. STEEL	3/4 NPT
66	4	PIPE PLUG	STAIN. STEEL	3/4 NPT
70	6	VENT PIPE CLIP	STAIN. STEEL	5/8" x 1/16" THK.
71	1	BOTTOM VENT PIPE	GALV. STEEL	2" SCH. 40 PIPE
75	1	BELL & GONG SUPPORT PIPE	STEEL	6" SCH. 80 PIPE
84	1	BELL & GONG SUPPORT PLATE.	STEEL	12" DIA. x 3/4" THK.
87	16	TOWER BRACES	STEEL	2 1/2" x 2 1/2" x 1/4" L
90	4	COUNTERWEIGHT GUSSETS	STEEL	16" x 3/8" THK.
91	4	DOUBLER PLATE	STEEL	19" x 2 1/4" x 3/8 THK.

NOTES:

- SEE LATEST REVISION OF U.S.C.G. CIVIL ENGINEERING SPECIFICATION No. 464 FOR FABRICATION REQUIREMENTS.
- THE TOTAL WEIGHT OF ITEM 55 SHALL BE 7,727 LBS. (+5% OR -1%).
- TYPE 304 STAINLESS STEEL MAY BE SUBSTITUTED FOR ITEM 71.
- TRIM ALL SHARP CORNERS 45° ON ITEMS 12, 13, 14, 15 AND 87.

F	4-10-06	W.D.	ADDED NOTE 4 TO TRIM ALL SHARP CORNERS ON TOWER 45".	S.M.
E	6-4-99	S.W.	ADDED ADDITIONAL AIR TEST FITTING (ITEMS 64 & 66).	S.M.
D	11-14-94	SW	MODIFIED ITEMS 42, 45, & 46. MOD WELDS IN SECTION S-S & DETAIL E. DEL ITEM 66. ADDED QTY TO ITEM 3.	S.M.
C	1-25-93	CAK	REORGANIZED DWG. MOD ITEM 17, MOORING EYE DIA. & NOTES. SPECIFIED QTY REQ FOR ITEMS 30, 31, & 70.	S.M.
C	1-25-93	CAK	DELETED ITEMS 34, 36, 50, 52, 56, 65, 74, 76, 77, 78, 88, 94, 96, AND 97.	S.M.
B	6-6-91	SW	MODIFIED BILL OF MATERIALS.	S.M.
A	11-9-90	SW	MODIFIED BILL OF MATERIALS AND NOTE 3.	S.M.
REV.	DATE	APPR.	DESCRIPTION	BY
DESIGNED:	U.S. COAST GUARD		HEADQUARTERS	
DRAWN:	R.V.F.		CIVIL ENGINEERING	
TRACED:	S.M.		1989 TYPE	
CHECKED:	W.E.K.		9x32 LR BUOY	
REVIEWED BY:	C. A. Kohler			
PROJECT ENGINEER	S. D. Walker			
REVIEWED BY:	G-ECV-3B			
REVIEWED BY:	APPROVED:		DATE	
	R. J. Wells		10/16/89	
UNLESS OTHERWISE SPECIFIED:			DRAWING NUMBER	
ALL DIMENSIONS ARE IN INCHES.			121132	
TOLERANCES: DIM. ±1/8			REV. F	
ANG. ±1°			SCALE: AS NOTED SHEET 5 OF 5	