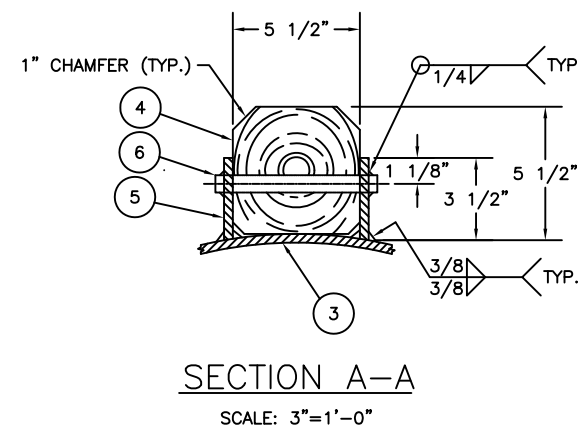
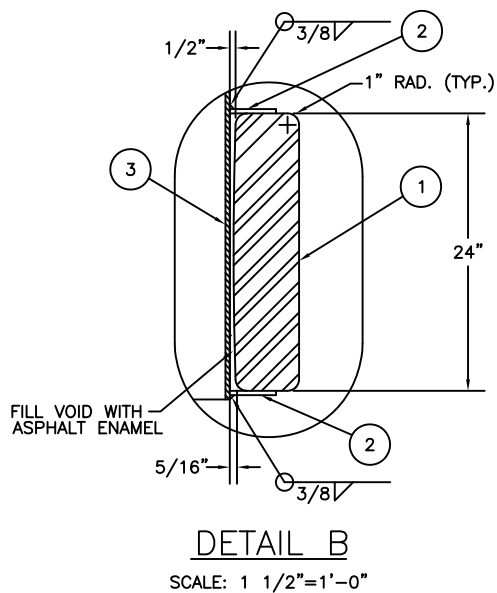
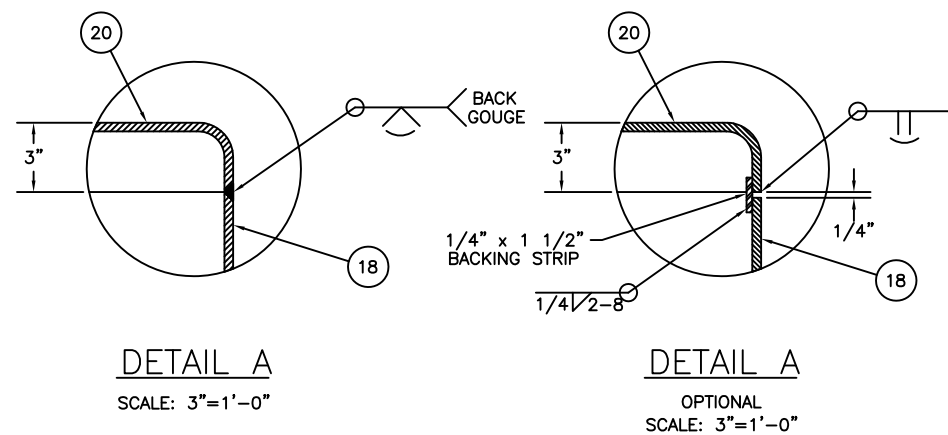
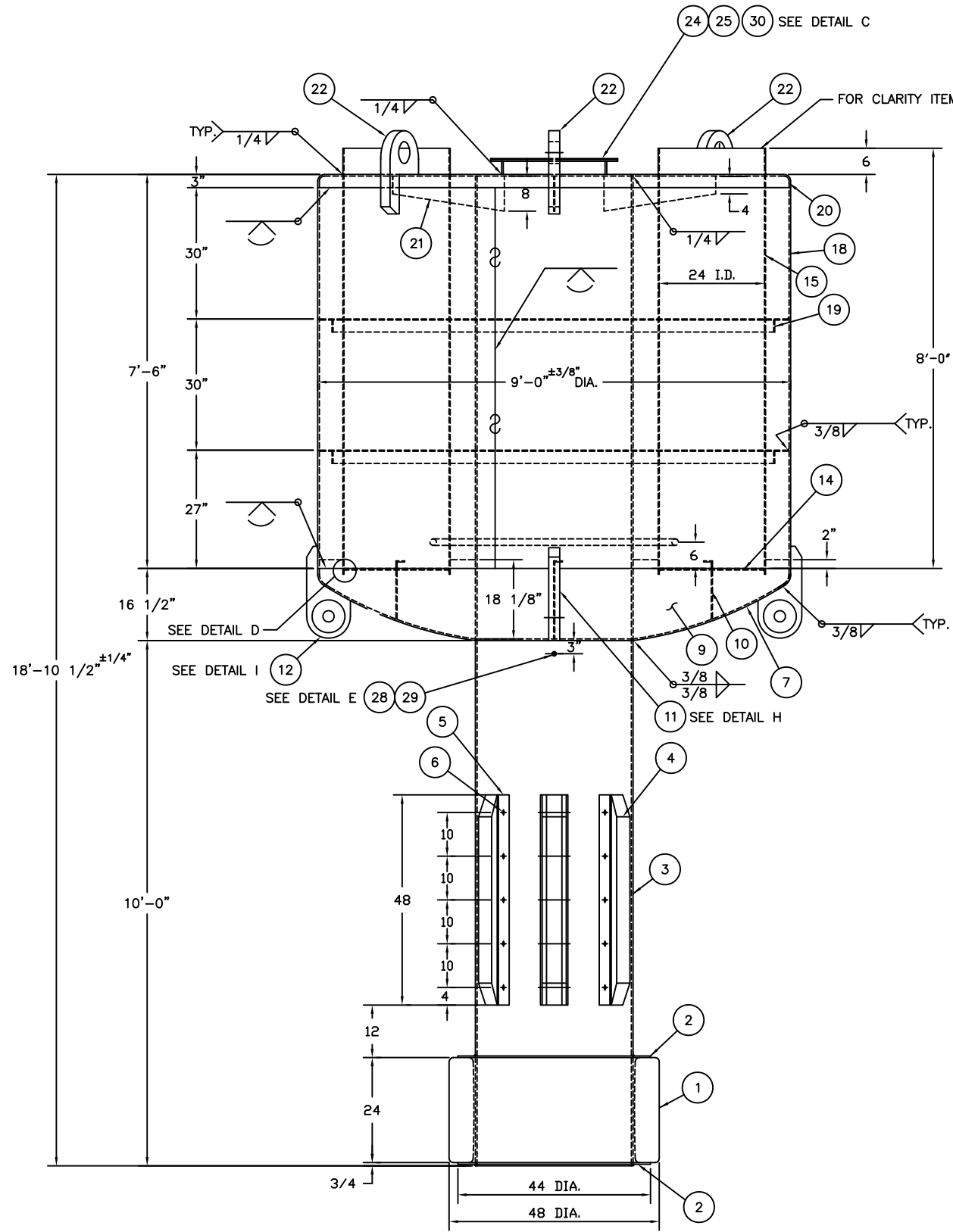


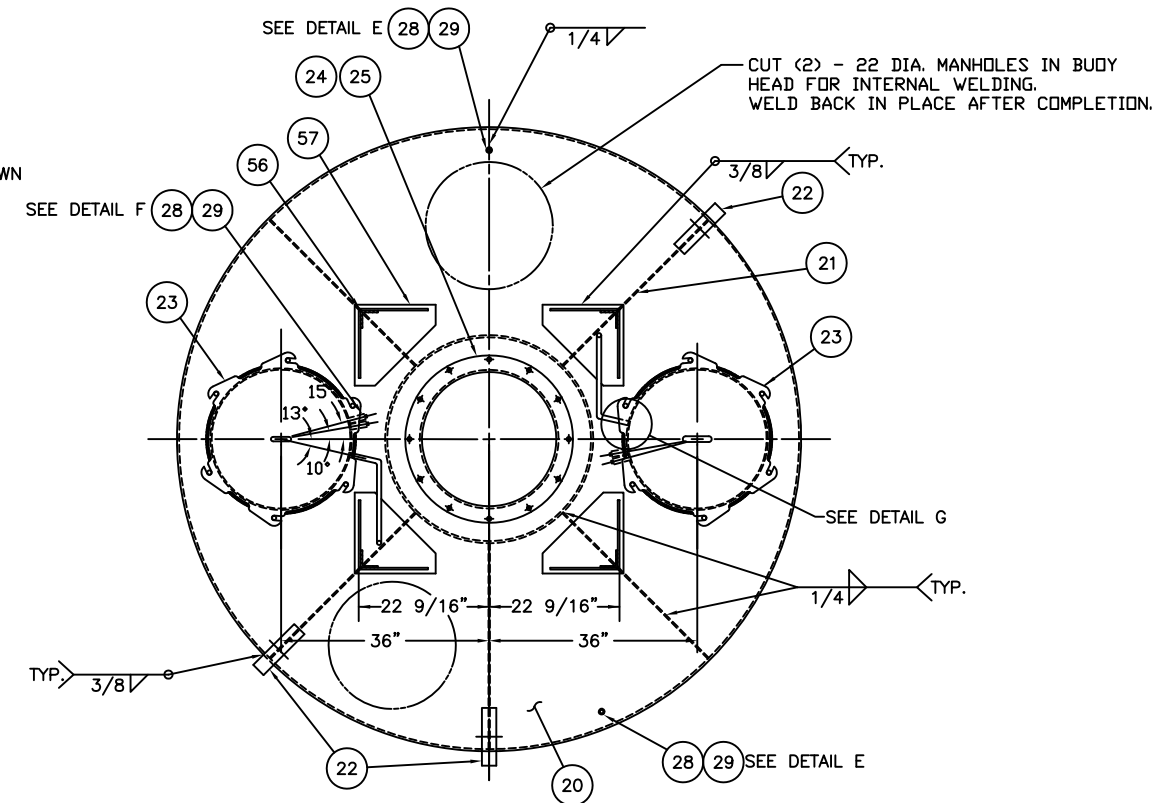
9x35 LWR BUOY
SCALE: 3/4"=1'-0"



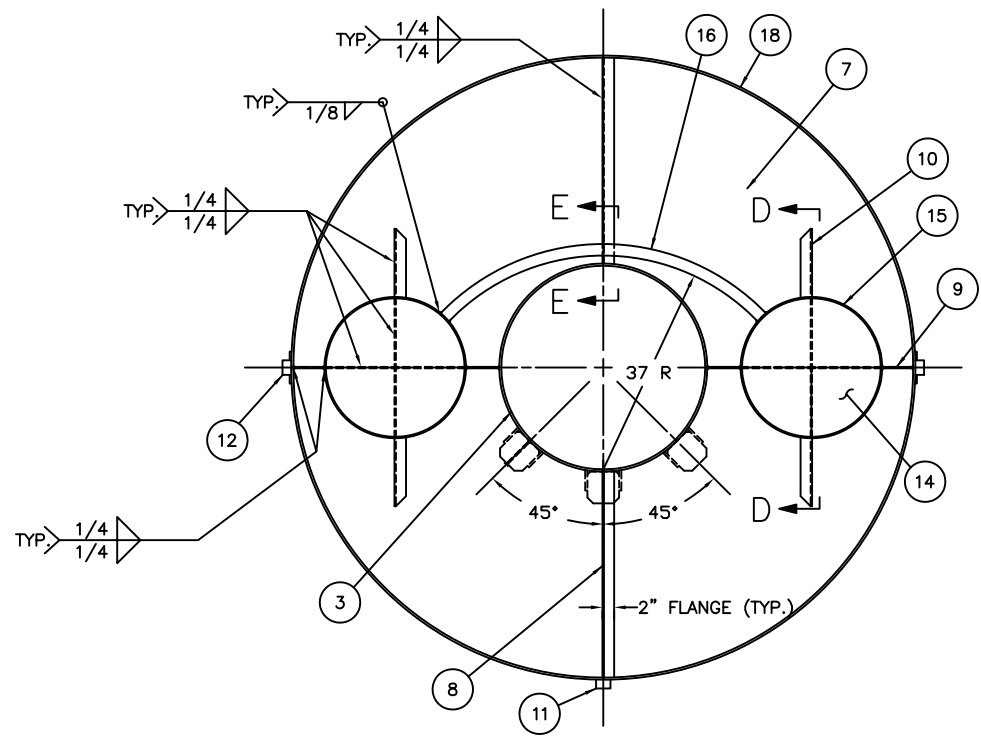
REV.	DATE	APPR.	DESCRIPTION	BY
F	4-10-06	W.D.	ADDED VENT LINE REF DIMENSION & GRAB BAR WELD SYMBOL	S.M.
E	11-28-01	WD	MOD QTY REQ FOR ITEM 65.	S.M.
D	6-4-99	S.W.	ADDED ADDITIONAL AIR TEST FITTING (ITEMS 28 & 29). MODIFIED MATERIAL REQUIREMENT FOR ITEM 16.	S.M.
C	10-1-97	S.W.	ADDED 6x6 HOLE IN ITEM 43 (SEE TOWER VIEW). ENLARGED BOLT HOLES FROM 5/8 TO 1 1/8 IN ITEM 50 (SEE SEC K-K).	S.M.
B	10-11-94	SW	ADDED SHEETS 5 AND 6. MODIFIED ITEMS 12, 29, AND 58. DEL QTY REQ FOR ITEMS 61, 62, AND 63.	S.M.
A	3-22-93	CAK	REORGANIZED DRAWING. MODIFIED ITEMS 35, 44, AND NOTES. CUT HOLES & ADDED ITEM 65 TO SECTION C-C.	S.M.
A	3-22-93	CAK	ADDED ITEM 46 TO SECTIONS D-D & E-E. DELETED ITEM 59	S.M.
DESIGNED: P.J.G.			U.S. COAST GUARD HEADQUARTERS	
DRAWN: SM			CIVIL ENGINEERING	
TRACED:			9x35 LWR BUOY	
CHECKED:				
REVIEWED BY:				
R. M. Trainer PROJECT ENGINEER				
REVIEWED BY:				
S. D. Walker G-ECV-3B				
REVIEWED BY:				
APPROVED:			DATE	
R. J. Wells CHIEF, OCEAN ENGINEERING BRANCH			6/4/91	
UNLESS OTHERWISE SPECIFIED: ALL DIMENSIONS ARE IN INCHES. TOLERANCES: DIM. ±1/8 ANG. ±1°			DRAWING NUMBER	
			121151	
			REV. F	
SCALE: AS NOTED			SHEET 1 OF 6	



9X35 BUOY HULL
SCALE: 3/4"=1'-0"

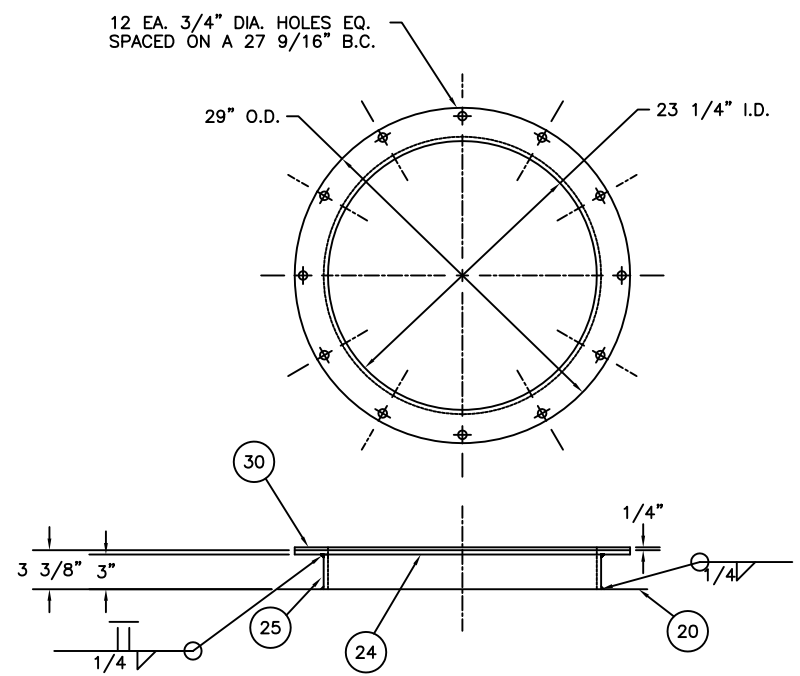


SECTION B-B
SCALE: 3/4"=1'-0"

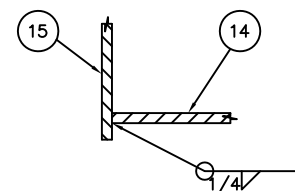


SECTION C-C
SCALE: 3/4"=1'-0"

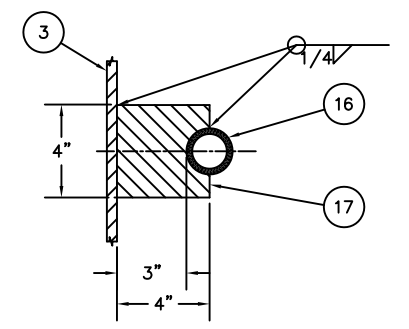
REV.	DATE	APPR.	DESCRIPTION	BY
F	4-10-06	W.D.	ADDED VENT LINE REF DIMENSION & GRAB BAR WELD SYMBOL	S.M.
E	11-28-01	WD	MOD QTY REQ FOR ITEM 65.	S.M.
D	6-4-99	S.W.	ADDED ADDITIONAL AIR TEST FITTING (ITEMS 28 & 29). MODIFIED MATERIAL REQUIREMENT FOR ITEM 16.	S.M.
C	10-1-97	S.W.	ADDED 6x6 HOLE IN ITEM 43 (SEE TOWER VIEW). ENLARGED BOLT HOLES FROM 5/8 TO 1 1/8 IN ITEM 50 (SEE SEC K-K)	S.M.
B	10-11-94	SW	ADDED SHEETS 5 AND 6. MODIFIED ITEMS 12, 29, AND 58. DEL QTY REQ FOR ITEMS 61, 62, AND 63.	S.M.
A	3-22-93	CAK	REORGANIZED DRAWING. MODIFIED ITEMS 35, 44, AND NOTES. CUT HOLES & ADDED ITEM 65 TO SECTION C-C.	S.M.
A	3-22-93	CAK	ADDED ITEM 46 TO SECTIONS D-D & E-E. DELETED ITEM 59	S.M.
DESIGNED: P.J.G. DRAWN: SM TRACED: CHECKED: REVIEWED BY:			U.S. COAST GUARD HEADQUARTERS CIVIL ENGINEERING 9x35 LWR BUOY	
REVIEWED BY: R. M. Trainer PROJECT ENGINEER				
REVIEWED BY: S. D. Walker G-ECV-3B			APPROVED: R. J. Wells CHIEF, OCEAN ENGINEERING BRANCH	DATE: 6/4/91
UNLESS OTHERWISE SPECIFIED: ALL DIMENSIONS ARE IN INCHES. TOLERANCES: DIM. ± 1/8 ANG. ± 1°			DRAWING NUMBER 121151	REV. F
PLOTING SCALE: 3/4"=1'-0"			SCALE: AS NOTED	SHEET 2 OF 6



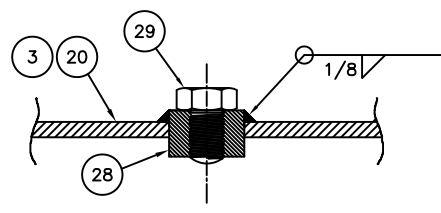
DETAIL C
SCALE: 1 1/2"=1'-0"



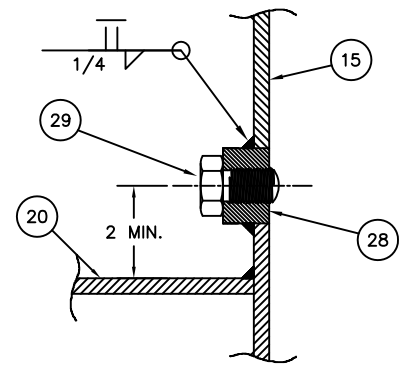
DETAIL D
SCALE: NONE



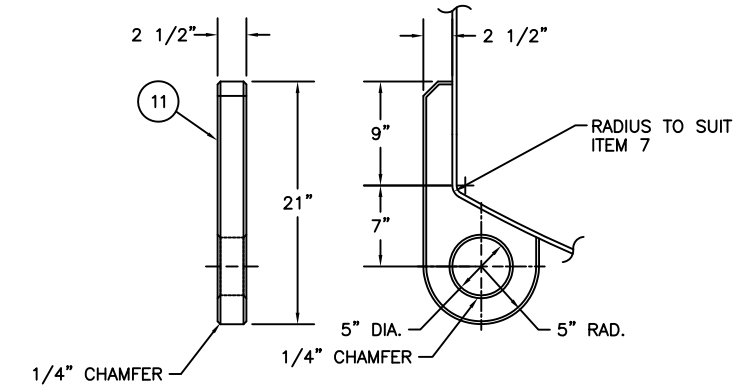
SECTION E-E
SCALE: 3"=1'-0"



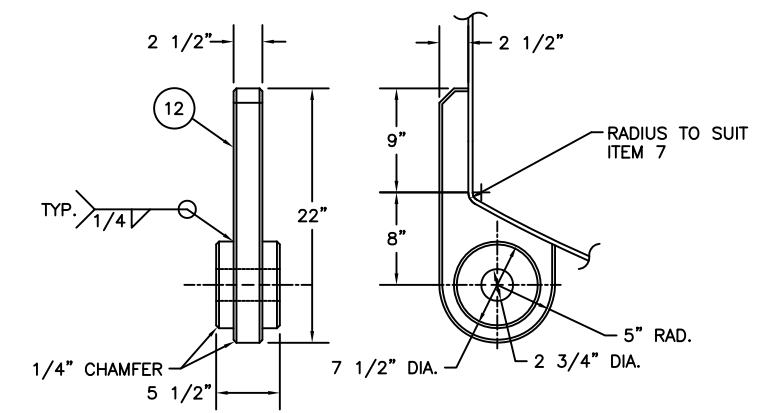
DETAIL E
SCALE: HALF



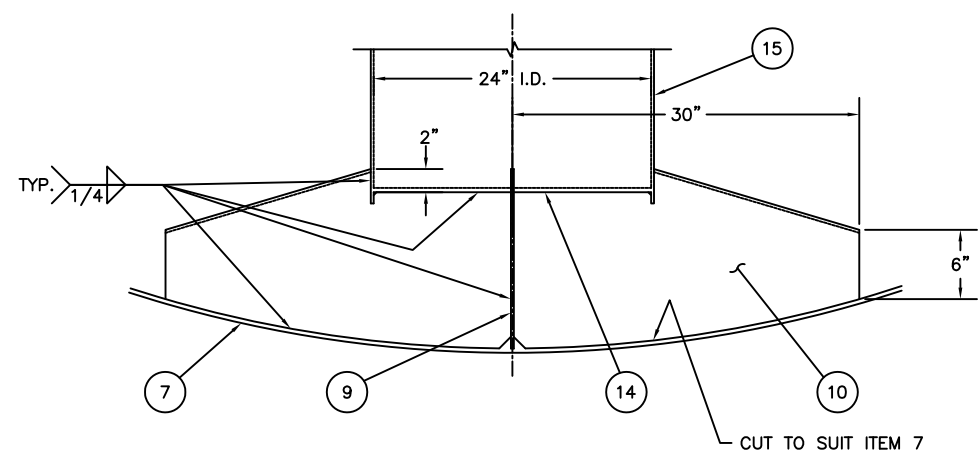
DETAIL F
SCALE: HALF



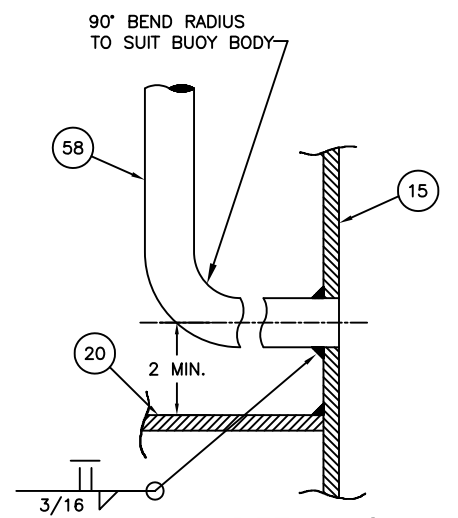
DETAIL H
SCALE: 1 1/2"=1'-0"



DETAIL I
SCALE: 1 1/2"=1'-0"

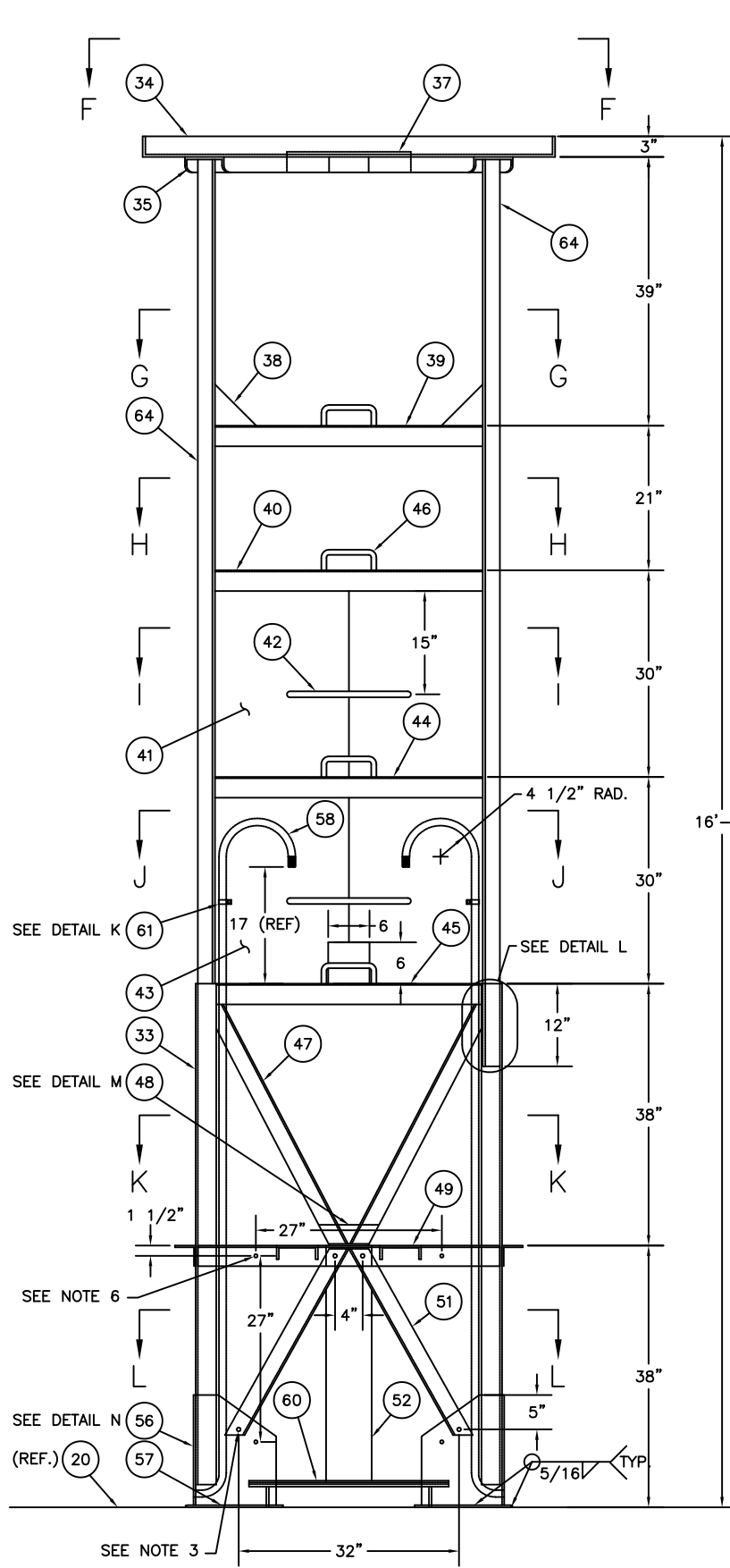


SECTION D-D
SCALE: 1 1/2"=1'-0"

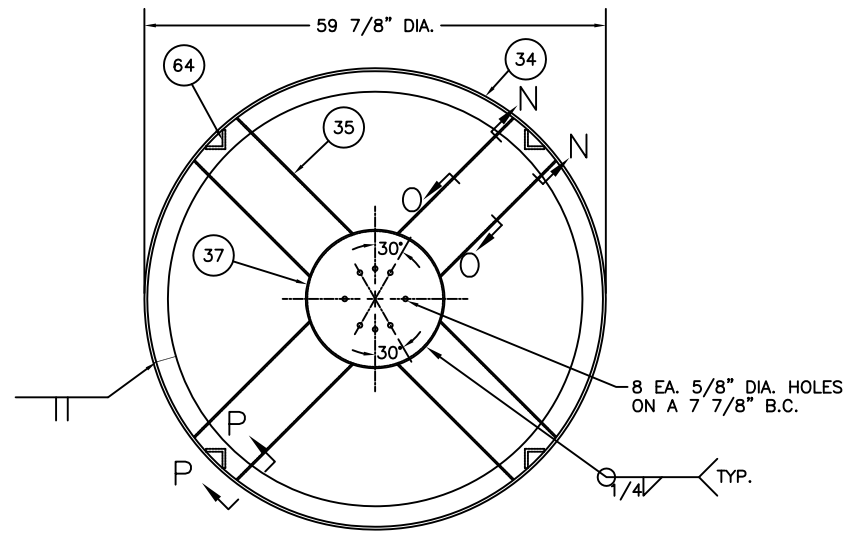


DETAIL G
SCALE: HALF

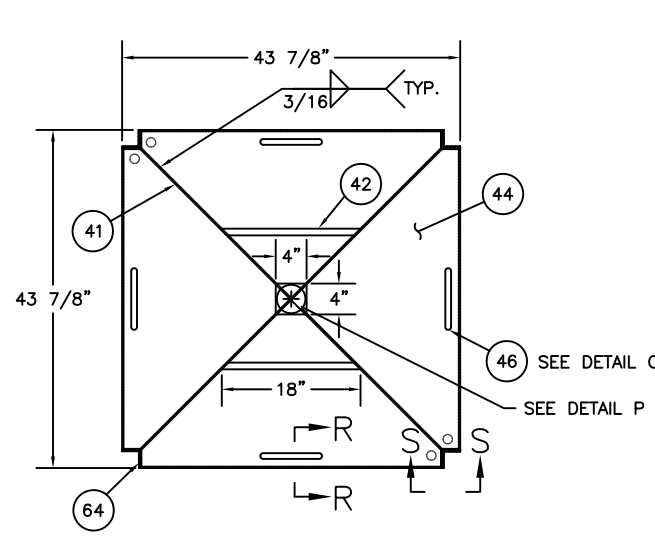
F	4-10-06	S.M.	ADDED VENT LIN REF DIMENSION & GRAB BAR WELD SYMBOL	S.M.
E	11-28-01	WD	MOD QTY REQ FOR ITEM 65.	S.M.
D	6-4-99	S.W.	ADDED ADDITIONAL AIR TEST FITTING (ITEMS 28 & 29). MODIFIED MATERIAL REQUIREMENT FOR ITEM 16.	S.M.
C	10-1-97	S.W.	ADDED 6x6 HOLE IN ITEM 43 (SEE TOWER VIEW). ENLARGED BOLT HOLES FROM 5/8 TO 1 1/8 IN ITEM 50 (SEE SEC K-K)	S.M.
B	10-11-94	SW	ADDED SHEETS 5 AND 6. MODIFIED ITEMS 12, 29, AND 58. DEL QTY REQ FOR ITEMS 61, 62, AND 63.	S.M.
A	3-22-93	CAK	REORGANIZED DRAWING. MODIFIED ITEMS 35, 44, AND NOTES. CUT HOLES & ADDED ITEM 65 TO SECTION C-C.	S.M.
A	3-22-93	CAK	ADDED ITEM 46 TO SECTIONS D-D & E-E. DELETED ITEM 59	S.M.
REV.	DATE	APPR.	DESCRIPTION	BY
DESIGNED:	PJG	U.S. COAST GUARD	HEADQUARTERS	
DRAWN:	SM	CIVIL ENGINEERING		
TRACED:		9x35 LWR BUOY		
CHECKED:				
REVIEWED BY:				
		R. M. Trainer PROJECT ENGINEER		
		S. D. Walker G-ECV-3B		
REVIEWED BY:		APPROVED:	R. J. Wells CHIEF, OCEAN ENGINEERING BRANCH	DATE 6/4/91
UNLESS OTHERWISE SPECIFIED: ALL DIMENSIONS ARE IN INCHES. TOLERANCES: DIM. ±1/8 ANG. ±1°			DRAWING NUMBER 121151	REV. F
PLOTING SCALE: 1-1/2"=1'-0"			SCALE: AS NOTED	SHEET 3 OF 6



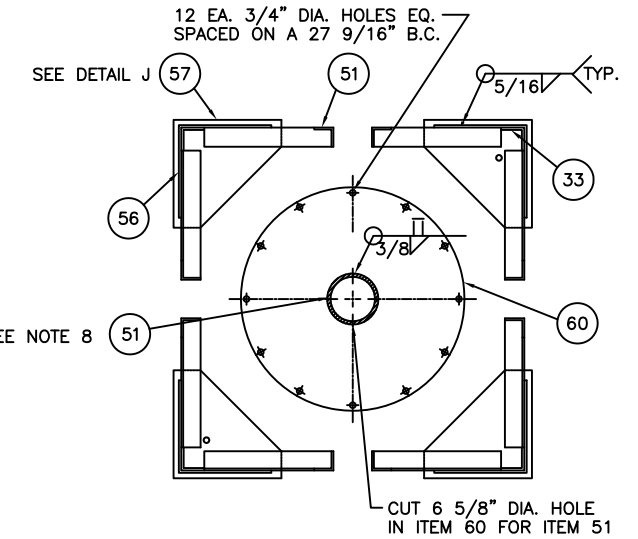
9x35 TOWER



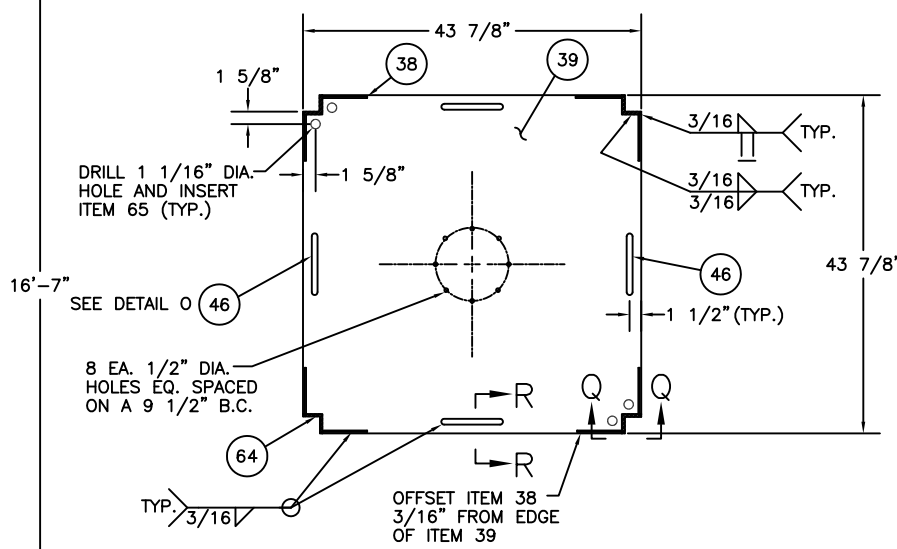
SECTION F-F



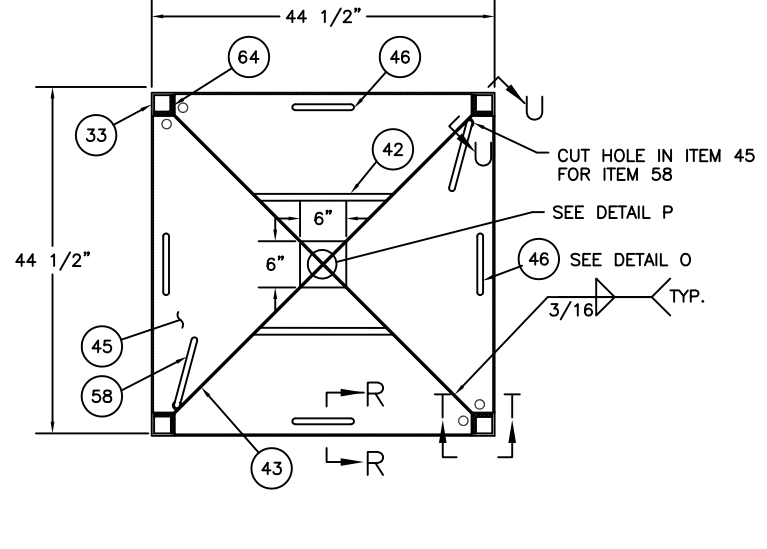
SECTION I-I



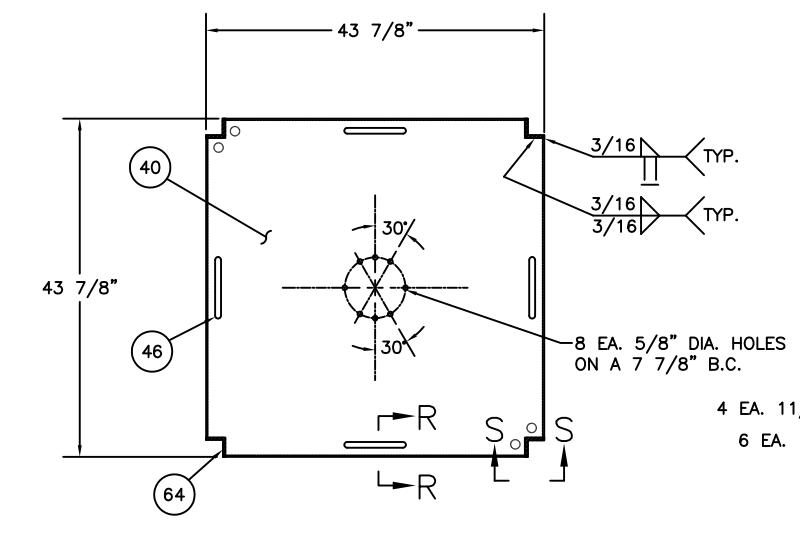
SECTION L-L



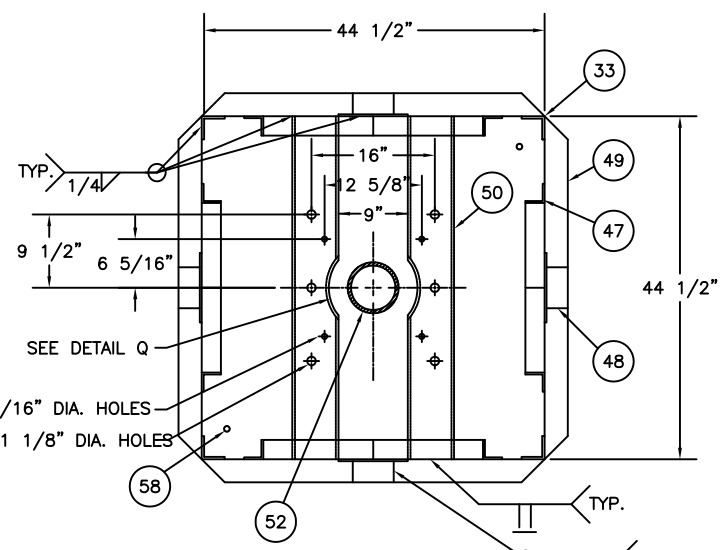
SECTION G-G



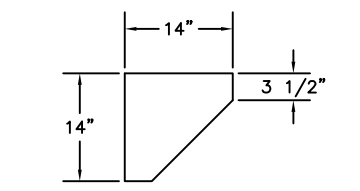
SECTION J-J



SECTION H-H

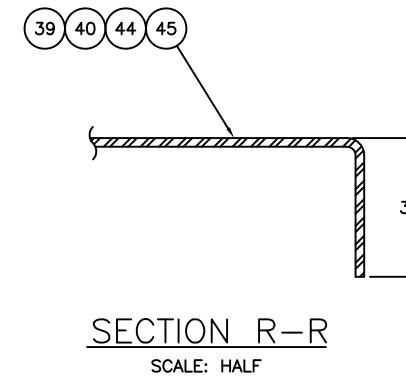
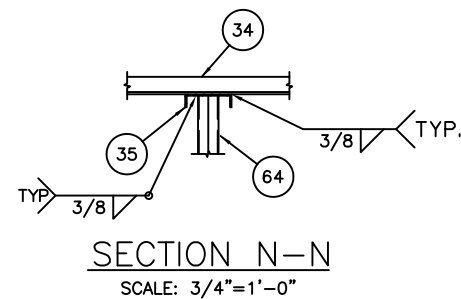
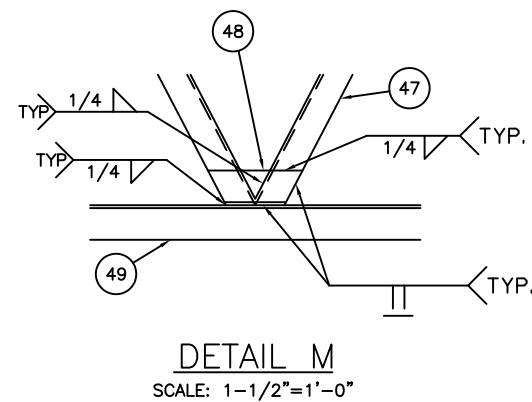
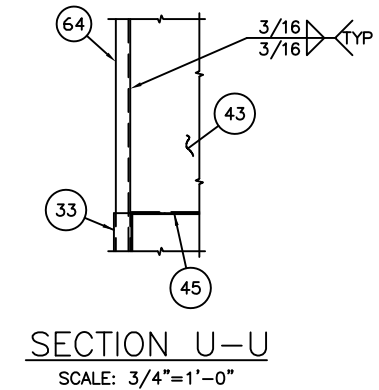
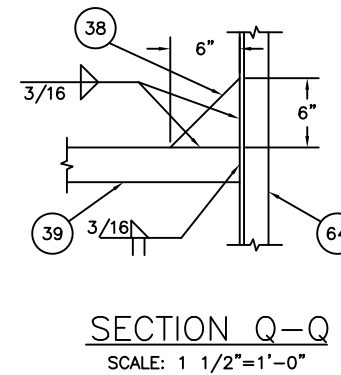
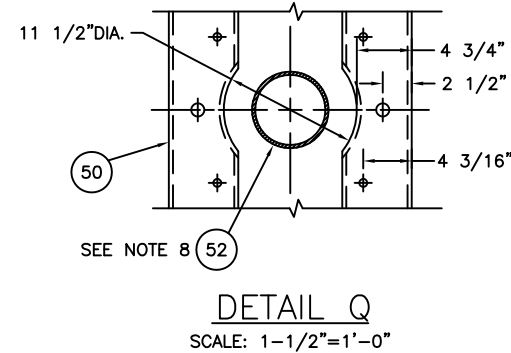
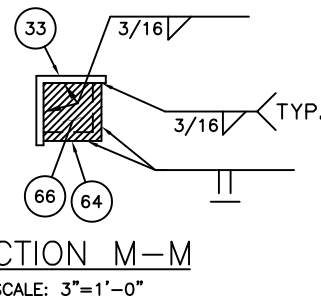
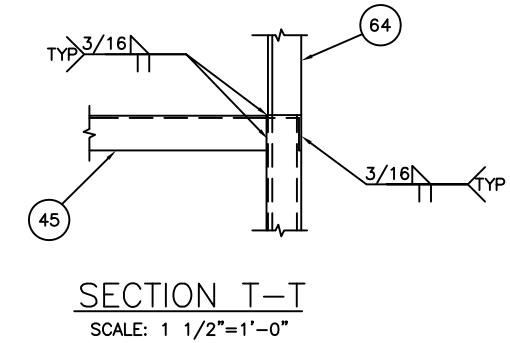
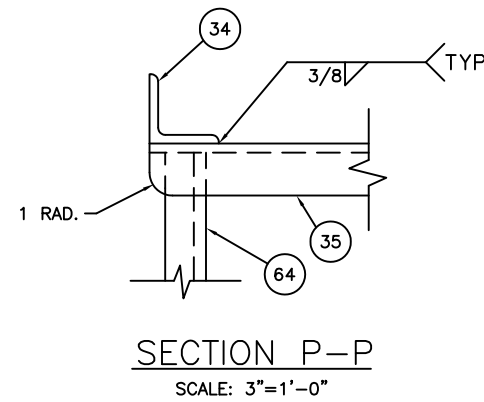
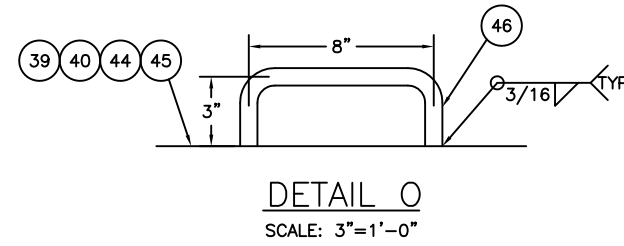
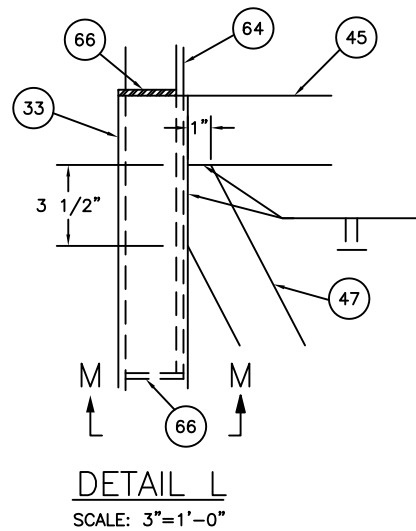
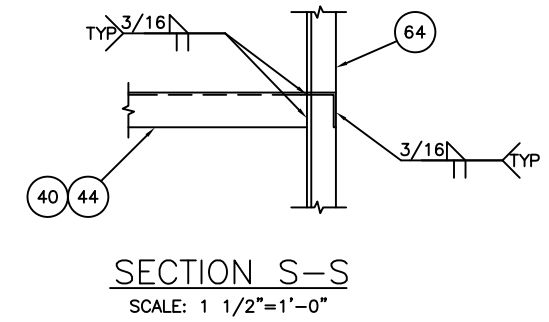
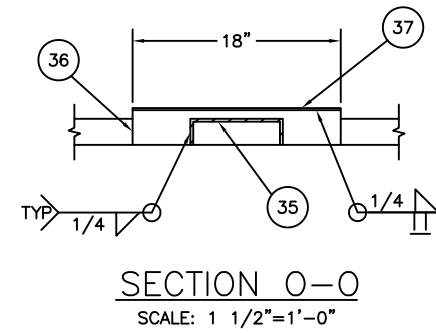
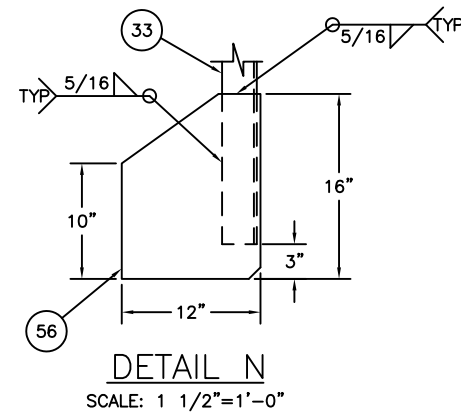
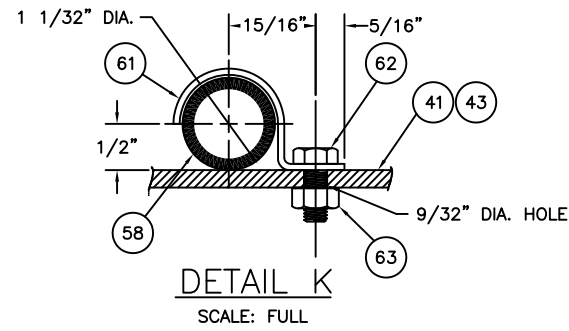


SECTION K-K



57 DETAIL J

REV.	DATE	APPR.	DESCRIPTION	BY
F	4-10-06	W.D.	ADDED VENT LINE REF DIMENSION & GRAB BAR WELD SYMBOL	S.M.
E	11-28-01	WD	MOD QTY REQ FOR ITEM 65.	S.M.
D	6-4-99	S.W.	ADDED ADDITIONAL AIR TEST FITTING (ITEMS 28 & 29). MODIFIED MATERIAL REQUIREMENT FOR ITEM 16.	S.M.
C	10-1-97	S.W.	ADDED 6x6 HOLE IN ITEM 43 (SEE TOWER VIEW). ENLARGED BOLT HOLES FROM 5/8 TO 1 1/8 IN ITEM 50 (SEE SEC K-K)	S.M.
B	10-11-94	SW	ADDED SHEETS 5 AND 6. MODIFIED ITEMS 12, 29, AND 58. DEL QTY REQ FOR ITEMS 61, 62, AND 63.	S.M.
A	3-22-93	CAK	REORGANIZED DRAWING. MODIFIED ITEMS 35, 44, AND NOTES. CUT HOLES & ADDED ITEM 65 TO SECTION C-C.	S.M.
A	3-22-93	CAK	ADDED ITEM 46 TO SECTIONS D-D & E-E. DELETED ITEM 59	S.M.
DESIGNED: PJG DRAWN: SM TRACED: CHECKED: REVIEWED BY: R. M. Trainer PROJECT ENGINEER REVIEWED BY: S. D. Walker G-ECV-3B REVIEWED BY:				
APPROVED:			R. J. Wells CHIEF, OCEAN ENGINEERING BRANCH	DATE 6/4/91
UNLESS OTHERWISE SPECIFIED: ALL DIMENSIONS ARE IN INCHES. TOLERANCES: DIM. ±1/8 ANG. ±1°				
DRAWING NUMBER			121151	REV. F
SCALE: AS NOTED			SHEET 4 OF 6	



REV.	DATE	APPR.	DESCRIPTION	BY
F	4-10-06	W.D.	ADDED VENT LINE REF DIMENSION & GRAB BAR WELD SYMBOL	S.M.
E	11-28-01	WD	MOD QTY REQ FOR ITEM 65.	S.M.
D	6-4-99	S.W.	ADDED ADDITIONAL AIR TEST FITTING (ITEMS 28 & 29). MODIFIED MATERIAL REQUIREMENT FOR ITEM 16.	S.M.
C	10-1-97	S.W.	ADDED 6x6 HOLE IN ITEM 43 (SEE TOWER VIEW). ENLARGED BOLT HOLES FROM 5/8 TO 1/8 IN ITEM 50 (SEE SEC K-K)	S.M.
B	10-11-94	SW	ADDED SHEETS 5 AND 6. MODIFIED ITEMS 12, 29, AND 58. DEL QTY REQ FOR ITEMS 61, 62, AND 63.	S.M.
A	3-22-93	CAK	REORGANIZED DRAWING. MODIFIED ITEMS 35, 44, AND NOTES. CUT HOLES & ADDED ITEM 65 TO SECTION C-C.	S.M.
A	3-22-93	CAK	ADDED ITEM 46 TO SECTIONS D-D & E-E. DELETED ITEM 59	S.M.
DESIGNED: PJG			U.S. COAST GUARD HEADQUARTERS	
DRAWN: SM			CIVIL ENGINEERING	
TRACED:			9x35 LWR BUOY	
CHECKED:				
REVIEWED BY:				
R. M. Trainer PROJECT ENGINEER				
REVIEWED BY:				
S. D. Walker G-ECV-3B				
REVIEWED BY:				
APPROVED:			DATE	
R. J. Wells CHIEF, OCEAN ENGINEERING BRANCH			6/4/91	
UNLESS OTHERWISE SPECIFIED: ALL DIMENSIONS ARE IN INCHES. TOLERANCES: DIM. ±1/8 ANG. ±1°			DRAWING NUMBER	
			121151	
			REV. F	
			SCALE: AS NOTED SHEET 5 OF 6	

BILL OF MATERIALS				
ITEM NO.	NO. REQ.	DESCRIPTION	MATL.	REMARKS
1	1	COUNTERWEIGHT	CAST IRON	SEE NOTE 4
2	2	COUNTERWEIGHT RING	STEEL	3/8 THK.
3	1	COUNTERWEIGHT TUBE	STEEL	36 O.D. x 3/8 THK.
4	3	FENDER	WOOD	SEE SPEC.
5	6	FENDER SUPPORTS	STEEL	3/8 THK.
6	15	FENDER ROD	STEEL	3/4 DIA. x 7 LG.
7	1	BUOY BOTTOM HEAD	STEEL	3/8 THK.
8	2	BOTTOM HD. STIFFENER	STEEL	1/4 THK.
9	2	POCKET STIFFENER	STEEL	1/4 THK.
10	4	POCKET BRACE	STEEL	1/4 THK.
11	1	BOTTOM LIFTING EYE	STEEL	SEE DETAIL H
12	2	MOORING EYE	STEEL	SEE DETAIL I
14	2	POCKET BOTTOM PLATE	STEEL	24 DIA. x 3/8 THK.
15	2	POCKET WRAPPER	STEEL	1/4 THK.
16	1	POCKET VENT PIPE	GALV. STEEL	2 SCH. 40 PIPE
17	1	VENT PIPE BRACE PLATE	STEEL	1/4 THK.
18	1	BODY WRAPPER	STEEL	3/8 THK.
19	2	WRAPPER STIFFNER	STEEL	3 x 3 x 1/4 L
20	1	TOP HEAD	STEEL	3/8 THK.
21	5	TOP HEAD BRACE	STEEL	1/4 THK.
22	3	LIFTING EYE	STEEL	SEE DRAWING 121140
23	2	POCKET COVER ASSEMBLY	STEEL	SEE DRAWING 121143
24	1	GENERATOR BASE PLATE	STEEL	3/8 THK.
25	1	CASE PLATE PIPE	STEEL	3/8 THK.
28	7	HALF COUPLING	STAIN. STEEL	3/4 NPT
29	7	PIPE PLUG	STAIN. STEEL	3/4 NPT
30	1	GASKET	RUBBER	1/4 THK.
33	4	TOWER LEGS	STEEL	3 x 3 x 3/8 L
34	1	LANTERN RING	STEEL	3 x 3 x 3/8 L
35	4	LANTERN STAND SUPPORTS	STEEL	C 8 x 11.5
36	1	LANTERN STAND RING	STEEL	3 x 1/4 THK.
37	1	LANTERN STAND PLATE	STEEL	18 DIA. x 3/16 THK.
38	8	CORNER BRACES	STEEL	3/16 THK.
39	1	UPPER PLATFORM	STEEL	3/16 THK.
40	1	LOWER PLATFORM	STEEL	3/16 THK.
41	2	UPPER R/R PLATES	STEEL	3/16 THK. SEE NOTE 2
42	4	STEPS	STEEL	7/8 DIA. x 18 LG.
43	2	LOWER R/R PLATES	STEEL	3/16 THK. SEE NOTE 2
44	1	MIDDLE R/R PLATFORM	STEEL	3/16 THK.
45	1	LOWER R/R PLATFORM	STEEL	3/16 THK.
46	16	GRAB BAR	STEEL	3/4 DIA. ROD
47	8	UPPER TOWER STRUTS	STEEL	2-1/2 x 2-1/2 x 1/4 L
48	4	STRUT SUPPORTS	STEEL	3 x 3 x 1/4 L
49	4	TOWER BRACES	STEEL	3 x 3 x 1/4 L
50	2	SOUND SIGNAL SUPPORTS	STEEL	C 6 x 10.5
51	8	LOWER TOWER STRUTS	STEEL	2-1/2 x 2-1/2 x 1/4 L
52	1	WHISTLE PIPE	STEEL	6 SCH 40x34-1/8 LG SEE NOTE 8
53	16	HEX HEAD BOLT	STAIN. STEEL	5/8-11 UNC x 2 LG.

BILL OF MATERIALS				
ITEM NO.	NO. REQ.	DESCRIPTION	MATL.	REMARKS
54	32	WASHER	STAIN. STEEL	5/8
55	16	NUT	STAIN. STEEL	5/8-11 UNC
56	4	TOWER LEG SUPPORTS	STEEL	5/16 THK.
57	4	TOWER BASE PLATE	STEEL	5/16 THK.
58	2	VENT	STAIN. STEEL	3/4 IPS SCH 40
60	1	WHISTLE PIPE COVER PLATE	STEEL	1/4 THK., 29 O.D.
61	2	VENT PIPE CLIP	STAIN. STEEL	5/8 x .062 STRIP
62	2	HEX HEAD CAP SCREW	STAIN. STEEL	1/4-20 UNC x 5/8 LG
63	2	HEX HEAD NUT	STAIN. STEEL	1/4-20 UNC
64	4	RADAR REFLECTOR POST	STEEL	2-1/2 x 2-1/2 x 3/8 L
65	16	GROMMET	RUBBER	3/4 I.D. x 3/16 GROOVE WIDTH
66	8	CAP PLATE	STEEL	2-1/2 SQ. x 1/4 THK.

NOTES:

- SEE LATEST REVISION OF U.S.C.G. CIVIL ENGINEERING SPECIFICATION No. 464 FOR FABRICATION REQUIREMENTS.
- RADAR RELECTOR PLATES MAY BE ASSEMBLED BY MATCHING APPROPRIATE SLOTS IN EACH PIECE AND WELDING, OR BY BENDING AND WELDING AS SHOWN IN DETAIL P.
- INSTALL TOWER SO THAT THE SIDE WITH THE BOLTED LOWER TOWER STRUTS FACE IN THE DIRECTION OF THE OFFSET LIFTING BAIL.
- ITEM 1 SHALL WEIGH 4,575 LBS. (+5% OR -1%).
- 3/4 x 7-1/2 BOLT MAY BE USED IN PLACE OF ITEM 6.
- FOUR EACH 1/2 DIAMETER HOLES AT 27 O.C. FOR SOLAR PANEL INSTALLATION (ALL FOUR FACES).
- ITEMS 51 ARE BOLTED AS SHOWN ON ONE SIDE OF THE TOWER ONLY. OTHER THREE SIDES ARE WELDED USING 5/16 FILLET WELDS.
- THE TOP OF ITEM 52 SHALL BE FLUSH WITH THE TOP OF ITEM 50.
- TYPE 304 STAINLESS STEEL MAY BE SUBSTITUTED FOR ITEM 16.

F	4-10-06	W.D.	ADDED VENT LINE REF DIMENSION & GRAB BAR WELD SYMBOL	S.M.
E	11-28-01	WD	MOD QTY REQ FOR ITEM 65.	S.M.
D	6-4-99	S.W.	ADDED ADDITIONAL AIR TEST FITTING (ITEMS 28 & 29). MODIFIED MATERIAL REQUIREMENT FOR ITEM 16.	S.M.
C	10-1-97	S.W.	ADDED 6x6 HOLE IN ITEM 43 (SEE TOWER VIEW). ENLARGED BOLT HOLES FROM 5/8 TO 1 1/8 IN ITEM 50 (SEE SEC K-K)	S.M.
B	10-11-94	SW	ADDED SHEETS 5 AND 6. MODIFIED ITEMS 12, 29, AND 58. DEL QTY REQ FOR ITEMS 61, 62, AND 63.	S.M.
A	3-22-93	CAK	REORGANIZED DRAWING. MODIFIED ITEMS 35, 44, AND NOTES. CUT HOLES & ADDED ITEM 65 TO SECTION C-C.	S.M.
A	3-22-93	CAK	ADDED ITEM 46 TO SECTIONS D-D & E-E. DELETED ITEM 59	S.M.
REV.	DATE	APPR.	DESCRIPTION	BY
DESIGNED:	PJG		U.S. COAST GUARD	HEADQUARTERS
DRAWN:	SM		CIVIL ENGINEERING	
TRACED:			9x35 LWR	
CHECKED:			BUOY	
REVIEWED BY:				
PROJECT ENGINEER				
REVIEWED BY:				
S. D. Walker				
G-ECV-3B				
REVIEWED BY:		APPROVED:	R. J. Wells	DATE: 6/4/91
			CHIEF, OCEAN ENGINEERING BRANCH	
UNLESS OTHERWISE SPECIFIED: ALL DIMENSIONS ARE IN INCHES. TOLERANCES: DIM. ±1/8 ANG. ±1°			DRAWING NUMBER	REV.
			121151	F
SCALE: AS NOTED			SHEET 6	OF 6

PLOTTING SCALE: 3/4"=1'-0"