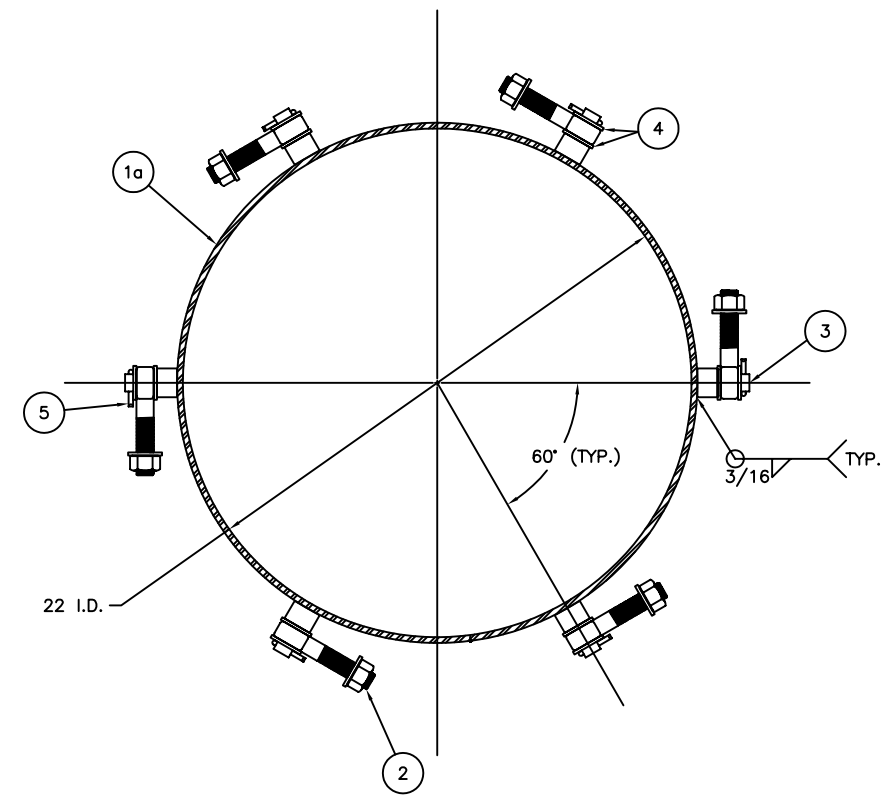
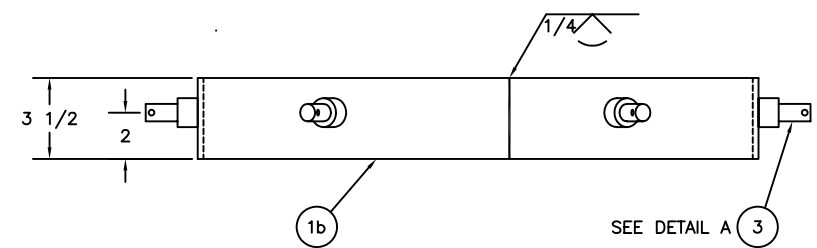


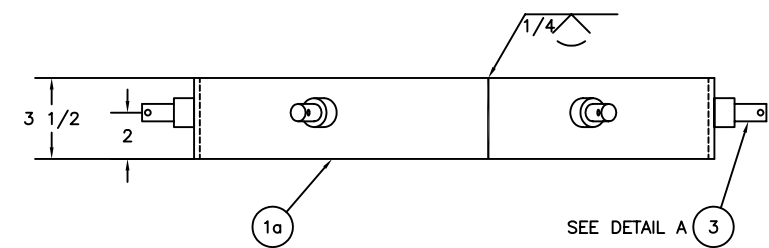
TOP VIEW  
SCALE: 3"=1'-0"



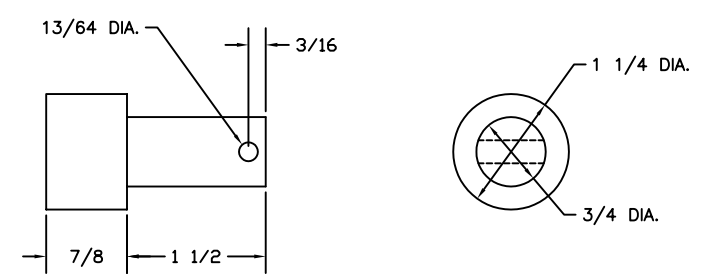
TOP VIEW  
SCALE: 3"=1'-0"



24" POCKET CONVERSION KIT  
SCALE: 3"=1'-0"  
(ITEMS 2, 4, & 5 NOT SHOWN FOR CLARITY)



22" POCKET CONVERSION KIT  
SCALE: 3"=1'-0"  
(ITEMS 2, 4, & 5 NOT SHOWN FOR CLARITY)



DETAIL A  
SCALE: FULL

ITEM NO.	22" NO. REQ.	24" NO. REQ.	BILL OF MATERIALS		
			DESCRIPTION	MATL.	REMARKS
1a	1	-	POCKET EXTENSION	STEEL	22 I.D. x 1/4 THK. x 3-1/2
1b	-	1	POCKET EXTENSION	STEEL	24 I.D. x 1/4 THK. x 3-1/2
2	6	6	SWINGBOLT ASSEMBLY	STAIN. STEEL	SEE NOTE 2
3	6	6	SWINGBOLT MOUNT	STAIN. STEEL	SEE DETAIL A
4	12	12	WASHER	STAIN. STEEL	3/4 NOM. DIA.
5	6	6	COTTER PIN	STAIN. STEEL	3/16 DIA. x 1-1/2 LG.

NOTES:

- SEE LATEST REVISION OF CIVIL ENGINEERING SPECIFICATION NO. 484 FOR FABRICATION REQUIREMENTS.
- ITEM 2: NSN 5340-01-034-5222 (SWINGBOLT, WASHER, & NUT) SEE CIVIL ENGINEERING DRAWING 121102.

A	12-3-02	WD	MODIFIED DIMENSIONS FOR 3.	S.M.
REV.	DATE	APPR.	DESCRIPTION	BY
DESIGNED: S.M.	U.S. COAST GUARD HEADQUARTERS			
DRAWN: S.M.	CIVIL ENGINEERING			
TRACED:	22" AND 24" BATTERY POCKET CONVERSION KIT			
CHECKED:				
REVIEWED BY: S. McEvoy				
PROJECT ENGINEER				
REVIEWED BY: S. D. Walker				
G-ECV-3B				
REVIEWED BY:	APPROVED: L. E. Jaeger	DATE: 4/26/94		
UNLESS OTHERWISE SPECIFIED: ALL DIMENSIONS ARE IN INCHES. TOLERANCES: DIM. ±1/8 ANG. ±1°			DRAWING NUMBER: 121162	REV. A
SCALE: AS NOTED			SHEET 1 OF 1	